

# Chip Trays



## Chip Trays

- Designed for use in the field
- Available in black, white and natural
- Securely stores samples
- Composed of tough UV resistant plastic
- Wide compartments

*All our manufacturers abide by the ETI code.*

## Sample Percussion Tray

- The black and white trays are providing longer field life with improved UV resistance, particularly in the black trays, should the trays be required to sit in the field for a while prior to being collected for analysis.
- Trays are sealed by a continuous hinge secured by 5 latches.

A	SKU	COLOUR	SIZE (LxWxH)	COMPARTMENT WIDTH
	SPT-B	Black	510 x 50 x 30mm	25mm
	SPT-N	Natural	510 x 50 x 30mm	25mm
	SPT-W	White	510 x 50 x 30mm	25mm

## Chip Tray Funnel

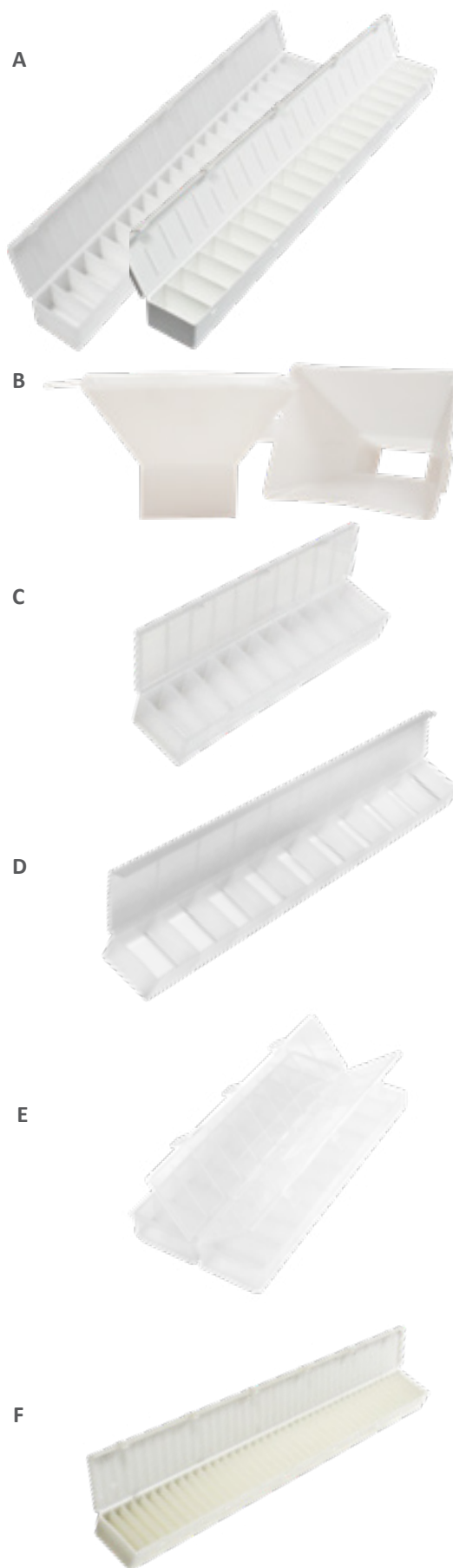
Our chip tray funnel was specifically designed for filling our 10 compartment and 20 compartment rock chip trays. The funnels even have a thumb tab to make them easier to hold while filling the rock chip trays.

B	SKU
	SPT-FUNNEL

## Chip Tray

Durable plastic, seal-fast, fixed-lid compartments chip trays to minimise the risk of the contamination of the sample.

C D E F	SKU	SIZE (LxWxH)	COMPARTMENT WIDTH
	1118-30000	282 x 52 x 22mm	25mm
	SPT-10-D	508 x 50 x 25mm	50mm
	1118-30001	255 x 120 x 30mm	2x 25mm
	SPT-40	580 x 52 x 27mm	11mm





Chip Trays - Camera Frame

This Chip Tray Camera Frame is designed to enable quality and consistent photography of the chip tray sections.

- Features**
- Chip tray lid holder.
  - Two Bright and light adjustable flat LED lights.
  - Secure Camera Mount Flat Head Screw 1/4 inch.
  - The Camera Frame’s wide base gives you enough space to slide the Chip tray easily as you take photos of the different sections of the Chip tray.
  - Easy to assemble.

- Parts included in the kit**
- Chip Tray Camera Frame
  - Dual LED Lights and Stands for Chip Tray Stand
  - Quick Shoe Plate and Adaptor Clamp
  - Camera Mount Flat Head Screw 1/4 inch



SKU	DESCRIPTION
1144-90020	Chip Tray Camera Frame Kit

**Note:** The camera and laptop are not included. Cameras are available to order, please check the Core Photography section on Westernex website for more information.



Chip Trays

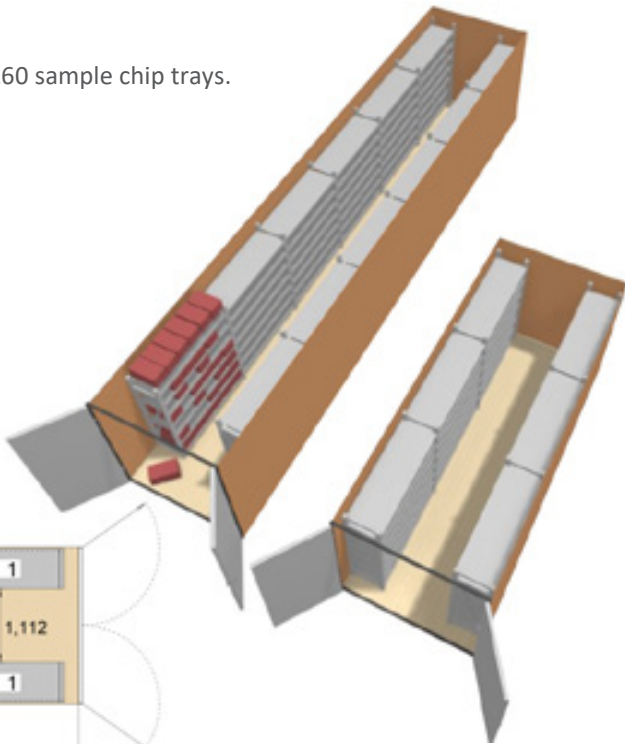
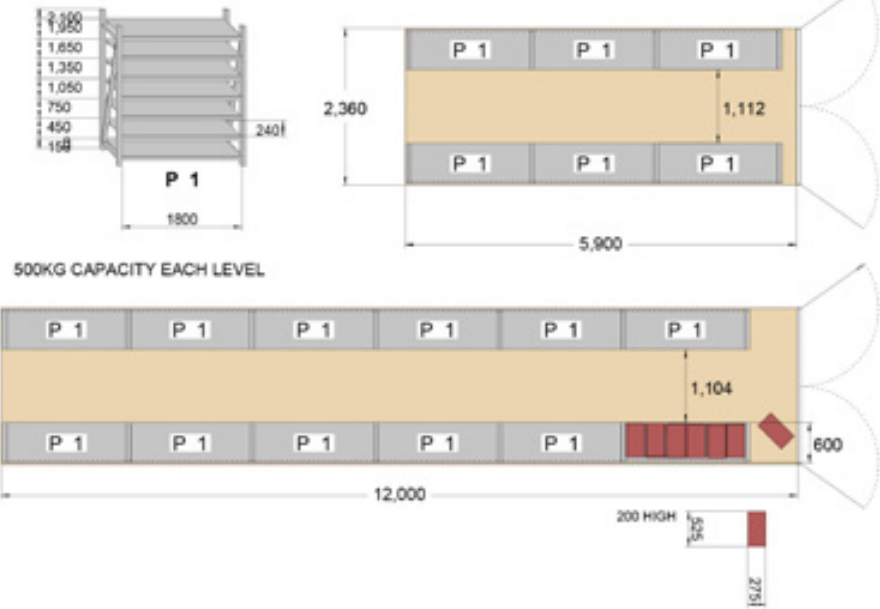
MDF Racking

Each bay of racking will hold 42 cartons of 30 trays, making this 1260 sample chip trays.

**20ft Containers:** 7,560 sample chip trays  
**40ft Containers:** 15,120 sample chip trays

SKU	DESCRIPTION	UOM
1118-20003	MDF Racking to suit 20ft	6 Bays
1118-20004	MDF Racking to suit 40ft	12 Bays

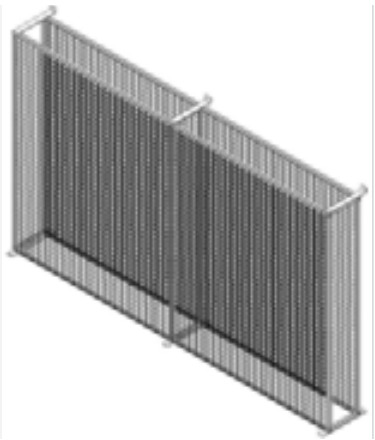
Please note that the carton used for these calculations is referring to SKU: CTN21118 (see previous page).



Chip Tray Storage Module Wall Mount

The frames are 2400mm high and 4000mm wide with a 400mm depth and holds approx 2390 chip trays. Lugs allow these frames to be secured to the wall and floor. No backing plate required as the trays will push up against the wall.

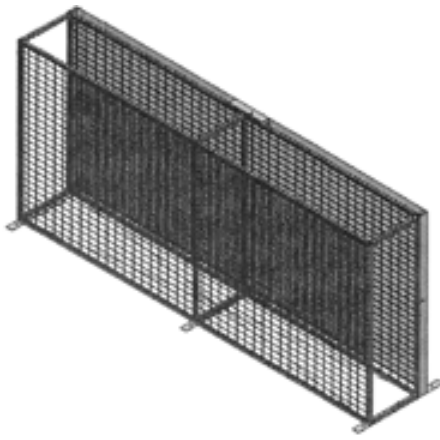
SKU	DESCRIPTION
1118-20006	2400 x 4000 x 400mm



Chip Tray Storage Module Free Standing

The frames are 2400mm high and 4000mm wide with a 400mm depth. They hold approx. 2390 chip trays. Lugs allow these frames to be secured to the floor. Incorporates a backing plate so that trays don't get push through.

SKU	DESCRIPTION
1118-20005	2400 x 4000 x 400mm



Chip Trays

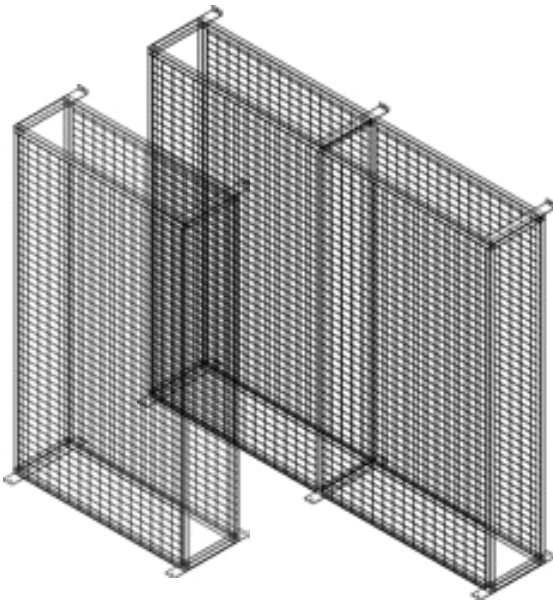
Mesh Racking

To supply a 20ft container will require 2x 2500mm units for each side plus 1x 1250mm for the back wall. Holds over 6000 chip trays.

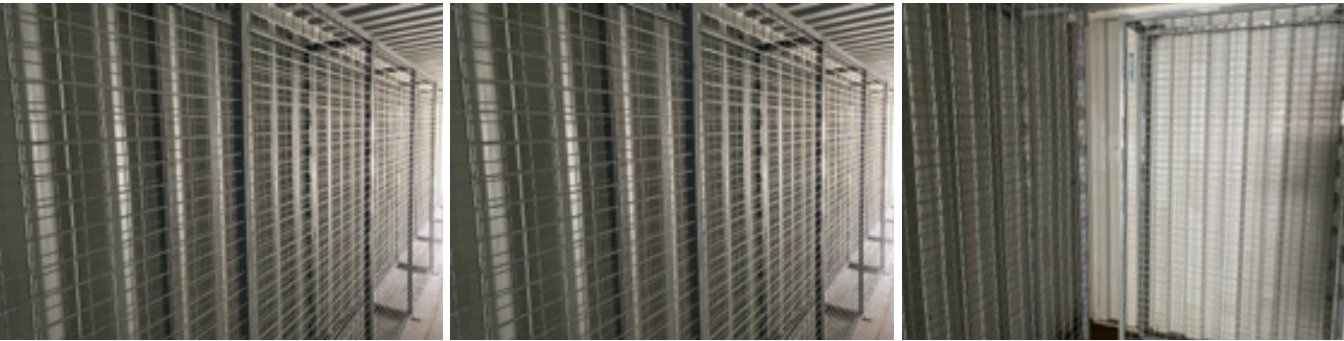
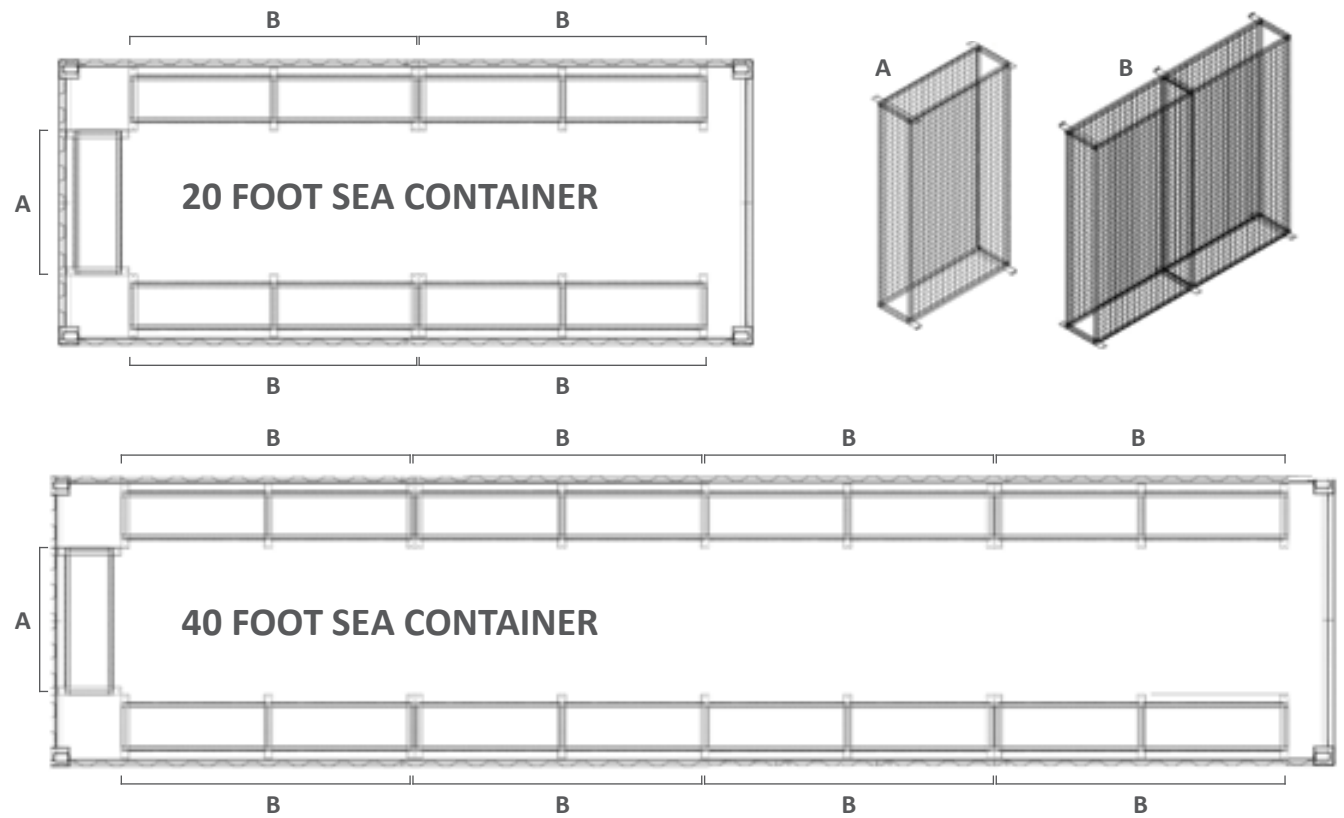
To supply a 40ft container will require 4x 2500mm units for each side plus 1x 1250mm for the back wall. Holds over 10 000 chip trays.

SKU	DESCRIPTION
1118-20007-20FT	5 Piece Kit to suit 20ft Sea Container
1118-20007-40FT	9 Piece Kit to suit 40ft Sea Container

Please note, neither of these products include the sea container, these can be arranged separately.



Configuration within the sea containers



Mesh Racking in a 40ft Container.

Chip Trays

Sample Storage Clear Trays

This system was designed to overcome several problems in sample collection and storage. The thin plastic and paper envelopes previously used were found to be non-transparent for viewing purposes, often split, were lost, frequently too bulky for efficient storage, and difficult to access for in-house geological reviews.

The sample trays are manufactured in a durable plastic called GP Styrene, which has excellent clarity for microscopic examination, and the fluorescence in oilfield samples can be reliably seen under ultraviolet light. The trays are stackable, allow easy access, reasonably strong, and will not deteriorate over long storage periods.

This system is suitable for a variety of professions and hobbies including: coin collectors, embroiderers, fishermen, fossil collectors, prospectors, and mineral museums.

Sample Storage Clear Trays-Small

- Contains: 5 compartments
- Capacity: 25g per compartment
- Material: GP Styrene
- Weight: 33g

SKU
1118-40004



Chip Tray Carton

Cartons are available in a couple of sizes. Available flat-packed for transport. Other custom sizes can be sourced, please contact our sales team with your requirements.

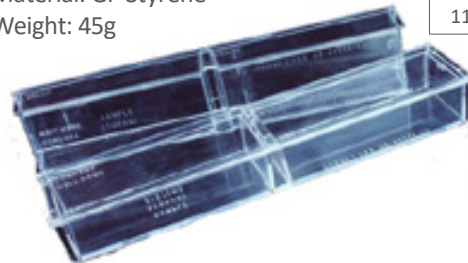
SKU	DESCRIPTION	SIZE
CTN21118	Holds 30 trays	525 x 275 x 200mm
1159-00400	Holds 100 trays	550 x 360 x 530mm

- Excellent clarity for microscopic examination
- Reliable visibility of the sample fluorescence under UV light
- Stackable, allow easy access, and reasonably strong
- Will not deteriorate over long storage periods
- Will not degrade under sunlight

Sample Storage Clear Trays-Jumbo

- Contains: 2 compartments
- Capacity: 75g per compartment
- Material: GP Styrene
- Weight: 45g

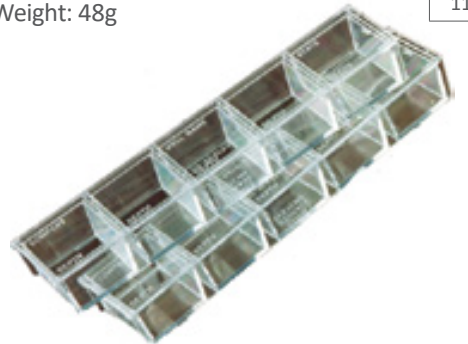
SKU
1118-40006



Sample Storage Clear Trays-Large

- Contains: 5 compartments
- Capacity: 50g per compartment
- Material: GP Styrene
- Weight: 48g

SKU
1118-40005





Chip Trays

Sample Storage Boxes

This system was designed to overcome several problems in sample collection and storage. The thin plastic and paper envelopes previously used were found to be non-transparent for viewing purposes, often split, were lost, frequently too bulky for efficient storage, and difficult to access for in-house geological reviews.

The wooden sample storage boxes hold the sample trays securely and are also stackable and durable. This system is a definite improvement on the paper and plastic envelopes previously used which proved to have very a short shelf life.

This system is suitable for a variety of professions and hobbies including: coin collectors, embroiderers, fishermen, fossil collectors, prospectors, and mineral museums.



Sample Storage Plywood Box

Storage box only with no trays, so you can customise your needs as per your requirements.

SKU	SIZE (HxWxD)
1118-40007	25 x 25 x 23cm

Sample Storage Box with 102 Small Trays(510 samples)

- Contains: 102 small trays
- Capacity: 510 samples
- Material: plywood
- Weight: 5kg

SKU	SIZE (HxWxD)
1118-40001	25 x 25 x 23cm

Sample Storage Box with 54 Large Trays(270 Samples)

- Contains: 54 large trays
- Capacity: 270 samples
- Material: plywood
- Weight: 5kg

SKU	SIZE (HxWxD)
1118-40002	25 x 25 x 23cm

Sample Storage Box with 54 Jumbo Trays (108 samples)

- Contains: 54 jumbo trays
- Capacity: 108 samples
- Material: plywood
- Weight: 5kg

SKU	SIZE (HxWxD)
1118-40003	25 x 25 x 23cm

Clipboards

Saunders Aluminium Clipboard A4 Top Opening Sheet Holder

Sheet Holder Clipboards have been around for a long time in one form or another. These sheet holders have a modern twist to better suit the handling of modern forms. Light and strong, the top folds clear back and around underneath - out of the way, making it easy to handle.

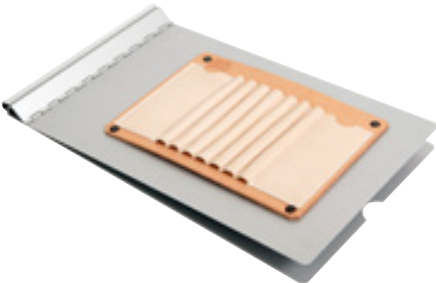
SKU
1166-13031



Saunders Aluminium Clipboard A4 With Leather Attachment

Leather attachment riveted on, to store pencils and rulers. Open cover rests at a 140° angle to restrict visibility of confidential documents. Provides solid smooth writing surface. Spring-clamp mechanism securely holds 3/8" of paper. Accommodates vertical or horizontal forms. Designed for right- or left- handed use. HIPAA Product Solution.

SKU
1166-00007



Saunders Aluminium A-Form Holder

The A-Holder is a versatile, efficient and easy-to-use storage clipboard form holder! It can be used by both right and left-handed people and will accommodate forms ruled in either portrait or landscape design. The writing plate folds under your desired number of copies to provide a hard smooth writing surface. The storage compartment below keeps your paperwork dry and protected.

SKU
1166-10017



Saunders Aluminium Clipboard A5 Side Opening Snapack

Made to accommodate memo size paper, the Saunders Snapak features a side opening design with a 9.5mm (3/8") storage compartment and clipboard to keep your paperwork organised. The clipboard incorporates a high tension serrated clip that holds up to 12mm (1/2") of paper securely.

SKU
1166-10507



Saunders Aluminium Clipboard A5 Springback Sheet Holder

This clipboard is made from aluminium and has a strong clamp to hold sheets firmly in place. The Springback will hold one sheet or one hundred sheets securely. The clamp locks in the open position for easy loading. Westernex is a Saunders distributor and can order in any Saunders clipboard from the US upon customer's request. Made from durable recycled aluminum with at least 30% post-consumer waste.

SKU
1166-16505





***Perth Main Warehouse***

66 Truganina Rd, Malaga,  
Western Australia 6090  
+61 (0) 8 9209 8500  
[perth@westernex.com.au](mailto:perth@westernex.com.au)

***Kalgoorlie Warehouse***

18 Kinclaven Way, Broadwood,  
Kalgoorlie, Western Australia 6430  
+61 (0) 8 9091 1152  
[kalgoorlie@westernex.com.au](mailto:kalgoorlie@westernex.com.au)

***Brisbane Warehouse***

14 Hasp St, Seventeen Mile Rocks,  
Queensland 4073  
+61 (0) 7 3376 2422  
[brisbane@westernex.com.au](mailto:brisbane@westernex.com.au)

***Mt Isa Warehouse***

13 Ryan Rd, (Entry off Davis Rd)  
Mt Isa, Queensland 4825  
+61 (0) 7 4743 2122  
[mtisa@westernex.com.au](mailto:mtisa@westernex.com.au)

***Orange Warehouse***

72 Astill Drive, Orange,  
NSW, 2800  
+61 (0) 7 3376 2422  
[brisbane@westernex.com.au](mailto:brisbane@westernex.com.au)

