

Compasses & Clinos



Compasses & Clinos

Breithaupt Cocla Stratum Compass

- Measurement and reading of azimuth of dip and angle of dip in one single operation (according to Clar method).
- Declination (30° model): ±30° and inclination adjustable.
- Declination (45° model): ±45° and inclination adjustable.
- Transparent extruded acrylic glass compass bottom and circular level with hinged mirror underneath permitting overhead measurements from below.
- Eddy current damping allows reading after approx. 3 sec.
- Compared to other compasses having ordinary damping several times more readings can be obtained simultaneously.
- Permanent locking of magnetic needle by means of lever on compass corner.
- Lateral operation of locking device permitting insertion into narrow rock joints.
- Sighting device for rapid coarse aiming.
- Cover plate with friction adjustment screw.
- Figures and graduation lines of tracing edge (60mm) and vertical circle scale deeply etched on a very hard aluminium alloy.
- Distinct identification of North on the compass needle (red).
- Low weight and small dimensions.
- Compass circle diameter: 50mm.
- Graduation interval: 1°
- Accuracy: <0.1°
- Numbering continuous from: 10° to 10°
- Vertical circle diameter: 25mm
- Graduation interval: 5°
- Estimation to: 1°
- Graduation range quadrantal: 235°
- Numbering from: 20° to 20°
- Circular level: 30/2mm
- Tracing edge: 60mm
- Dimensions: 74 x 96 x 25mm, 275g
- Packed dimensions: 87 x 105 x 57mm, 375g



SKU	DECLINATION ADJUSTMENT
1120-00000	30°
1120-00002	45°

Breithaupt Gekom/Gebru Series Comparison Chart

Type/Features	Gebru	Gekom Pro	Gekom N Pro
SKU	1120-00005	1120-00003	1120-00004
Method according to Clar method	Yes		
Method according to Brunton method (strike an fall)	Yes	No	
Clinometer type	Tubular level adjustable from outside	No	Ball
Clinometer graduation	1°	N/A	2°
Compass circle graduation	1°	2°	
Vertical circle graduation	2°	5°	
Declination adjustment	By outside adjusting screw (±60°)		
Housing	One piece		
Waterproof	Yes		

Due to continuous further development, all information without engagement; State 01/2018.

Compasses & Clinos

Breithaupt Gekom Pro Compass

- Measurement and reading of azimuth of dip and angle of dip in one single operation (according to Clar method)
- Declination and inclination adjustable
- Inner circle diameter 48mm with interval graduation 2°
- Reading by estimation 1°
- Dip measurement range 270° graduated in 5°
- Circular spirit level
- Waterproof one-piece housing
- Declination adjustment without opening the housing
- Dimensions: 72 x 90 x 21mm, 315g
- Packed dimensions: 92 x 105 x 45mm, 335g



SKU
1120-00003

Breithaupt Gekom N Pro Compass

- Measurement and reading of azimuth of dip and angle of dip in one single operation (according to Clar method)
- Inclination adjustable
- Inner circle diameter 48mm with interval graduation 2°
- Reading by estimation 1°
- Circular spirit level
- Integrated clinometer ±90°
- Mirror for observing needle during sighting process
- Waterproof one-piece housing
- Declination adjustment without opening the housing
- Dimensions: 72 x 90 x 21mm, 315g
- Packed dimensions: 92 x 105 x 45mm, 335g



SKU
1120-00004

Breithaupt Gebru Universal Compass

- New innovative design
- Brunton type measurement of strike and fall
- Waterproof high quality one-piece housing
- Inner circle diameter 48mm with graduation: 1°/1gon
- Inclination adjustable
- Declination adjustment without opening the housing
- Adjustable clinometer with level and measuring range ±90°
- Spirit level
- Mirror and innovative integrated diopter
- Dimensions: 72 x 93 x 27mm, 370g
- Packed dimensions: 110 x 110 x 60mm, 405g



SKU
1120-00005

Compasses & Clinos

Brunton Standard Transit Compass 0-360



- NeFeB Disk Magnet improves shock resistance and resists demagnetization over time.
- A percent grade scale with increments of 5%.
- Mirror with transparent sight for shooting accurate bearings within 1/2°.
- Internal components are sealed for improved water and dust resistance.
- Short and long sights provide additional functionality and accuracy when shooting bearings.
- Sapphire jewel bearing allows for smooth needle movement throughout the life of the instrument.
- Flat bottom with non-slip silicon foot allows for low angle strike and dip measurements.
- Open your beverage at the end of a long field day with an unobtrusive bottle opener that stays out of the way until needed.
- Leather case included.
- Overall dimensions: 79 x 71 x 34mm / 3.1 x 2.8 x 1.3”.
- Weight: 195g / 6.9oz.

SKU	ZONE
1119-15020+010	Zone A
1119-15020-000	Zone B
1119-15020-010	Zone C
1119-15020-020	Zone D
1119-15020-030	Zone E
1119-15020-040	Zone F
1119-15020-050	Zone G
1119-15020-060	Zone H
1119-15020-070	Zone I
1119-15020-080	Zone J
1119-15020-090	Zone K
1119-15020-100	Zone L
1119-15020-110	Zone M
1119-15020-120	Zone N
1119-15020-130	Zone O

Brunton Standard Transit Compass 0-90



- NeFeB Disk Magnet improves shock resistance and resists demagnetization over time.
- A percent grade scale with increments of 5%.
- Mirror with transparent sight for shooting accurate bearings within 1/2°.
- Internal components are sealed for improved water and dust resistance.
- Short and long sights provide additional functionality and accuracy when shooting bearings.
- Sapphire jewel bearing allows for smooth needle movement throughout the life of the instrument.
- Flat bottom with non-slip silicon foot allows for low angle strike and dip measurements.
- Open your beverage at the end of a long field day with an unobtrusive bottle opener that stays out of the way until needed.
- Leather case included.
- Overall dimensions: 79 x 71 x 34mm / 3.1 x 2.8 x 1.3”.
- Weight: 195g / 6.9oz.

SKU	ZONE
1119-15021+010	Zone A
1119-15021-000	Zone B
1119-15021-010	Zone C
1119-15021-020	Zone D
1119-15021-030	Zone E
1119-15021-040	Zone F
1119-15021-050	Zone G
1119-15021-060	Zone H
1119-15021-070	Zone I
1119-15021-080	Zone J
1119-15021-090	Zone K
1119-15021-100	Zone L
1119-15021-110	Zone M
1119-15021-120	Zone N
1119-15021-130	Zone O

Compasses & Clinos

Brunton ComPro Pocket Transit Compass 0-90

- Single NdFeB magnet resists demagnetization better than other types of magnets for increased reliability.
- Vertical angle measurements to +/- 90° or 100% grades.
- A percent grade scale with increments of 5%.
- Induction dampened needle for quick, accurate readings.
- Sapphire jewel bearing allows for smooth needle movement.
- Magnetic declination adjustments allows for east or west declination settings to +/- 180°.
- Short and long sights for increased accuracy when sighting azimuth or vertical angles.
- Precision aligned mirror with convenient "see-through" sighting capability.
- Composite body material has less thermal retention.
- Ball & socket tripod mount for increased accuracy.
- O-rings make the ComPro waterproof for increased reliability.
- Leather case included.
- Overall dimensions: 81.28 x 71.12 x 33.02mm/3.2 x 2.8 x 1.3"
- Weight: 161.60g / 5.7 oz



SKU	ZONE
1119-15007+010	Zone A
1119-15007-000	Zone B
1119-15007-010	Zone C
1119-15007-020	Zone D
1119-15007-030	Zone E
1119-15007-040	Zone F
1119-15007-050	Zone G
1119-15007-060	Zone H
1119-15007-070	Zone I
1119-15007-080	Zone J
1119-15007-090	Zone K
1119-15007-100	Zone L
1119-15007-110	Zone M
1119-15007-120	Zone N
1119-15007-130	Zone O

Brunton ComPro Pocket Transit Compass 0-360

- Single NdFeB magnet resists demagnetization better than other types of magnets for increased reliability.
- Vertical angle measurements to +/- 90° or 100% grades.
- A percent grade scale with increments of 5%.
- Induction dampened needle for quick, accurate readings.
- Sapphire jewel bearing allows for smooth needle movement.
- Magnetic declination adjustments allows for east or west declination settings to +/- 180°
- Short and long sights for increased accuracy when sighting azimuth or vertical angles
- Precision aligned mirror with convenient "see-through" sighting capability
- Composite body material has less thermal retention
- Ball & socket tripod mount for increased accuracy
- O-rings make the ComPro waterproof for increased reliability
- Leather case included.
- Overall dimensions: 81.28 x 71.12 x 33.02mm / 3.2 x 2.8 x 1.3"
- Weight: 161.6g / 5.7 oz



SKU	ZONE
1119-15008+010	Zone A
1119-15008-000	Zone B
1119-15008-010	Zone C
1119-15008-020	Zone D
1119-15008-030	Zone E
1119-15008-040	Zone F
1119-15008-050	Zone G
1119-15008-060	Zone H
1119-15008-070	Zone I
1119-15008-080	Zone J
1119-15008-090	Zone K
1119-15008-100	Zone L
1119-15008-110	Zone M
1119-15008-120	Zone N
1119-15008-130	Zone O

Compasses & Clinos

Brunton Geo Pocket Transit Compass 0-360



SKU	ZONE
1119-15010+010	Zone A
1119-15010-000	Zone B
1119-15010-010	Zone C
1119-15010-020	Zone D
1119-15010-030	Zone E
1119-15010-040	Zone F
1119-15010-050	Zone G
1119-15010-060	Zone H
1119-15010-070	Zone I
1119-15010-080	Zone J
1119-15010-090	Zone K
1119-15010-100	Zone L
1119-15010-110	Zone M
1119-15010-120	Zone N
1119-15010-130	Zone O

- Leather case included.
- Adjustable needle locking mechanism.
- Hinge clinometer with 1° increments for 1/2° readable dip measurements.
- Two long-level bubbles on the outside of the Aluminium housing for no guess leveling from the sides or the bottom.
- Cover hinge assembly designed for increased durability
- Buck Horn style sights for increased accuracy when sighting azimuth or vertical angles.
- Single NdFeB magnet resists demagnetization better than any other type of magnet.
- Azimuth accuracy ±1/2° with 1° graduations.
- Vertical angle accuracy ±1/2° with 1° graduations and 10min vernier.
- Vertical angle measurements to ±90° or 100% grade. Percent grade scale with increments of 5%.
- Induction dampened needle for quick, accurate readings.
- Sapphire jewel bearing allows smooth needle movement.
- Magnetic declination adjustment allows for east or west declination settings to ±180°.
- Precision aligned mirror with convenient see-through sighting capability.
- Aluminium billet body assembly makes the GEO nearly indestructible.
- 6061-T6 hard anodized Aluminium body for permanent color and scratch resistance.
- Ball and socket tripod mount is centered for increased accuracy of rotation.
- O-rings make the GEO Waterproof for increased reliability.
- Overall dimensions: 96.52 x 71.12 x 33.02mm / 3.8 x 2.8 x 1.3".
- Weight: 362.9g / 12.8 oz.

Compasses & Clinos

Brunton Standard Orange Compass

- An orange colour helps to increase visibility in the field.
- The flat bottom with a non-slip silicon foot allows for low angle strike and dip measurements.
- An unobtrusive bottle opener that stays out of the way until needed.
- The mirror enables sighting and measurement of bearings and vertical angles.
- This ompass comes with a protective leather case.
- Short and long sights give the user additional functionality and accuracy when shooting bearings.
- The precision NdFeB disc magnet provides very accurate readings and resists demagnetization.
- The magnetic needle can be balanced for use almost anywhere in the world.
- Induction dampening makes for a quick-settling needle.
- The sapphire jewel bearing allows for smooth needle movement throughout the life of the instrument.
- The needle lock button can lock or free the needle, depending on the model.
- The internal components are sealed with an O-ring for improved water and dust resistance.
- All transits are compatible with Brunton Jacob’s Staff/ Tripod ball and socket adaptor.
- Each model is available in either Azimuth (0-360) or Quadrant (0-90) formats.



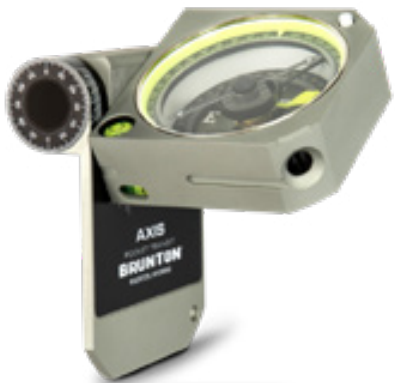
SKU
1119-15020-120-O

Specification

- Measurement style: Strike & Dip
- Dimensions: 3.1 x 2.8 x 1.3" | 7.9 x 7.1 x 3.4cm
- Weight: 6.9oz | 195g
- Azimuth: +/- 1/2°w/ 1°graduations
- Internal clinometer: +/- 1/2°w/ 1°graduations
- Percent grade: 5% graduations
- Declination adjustment: +/- 180°

Brunton Axis Pocket Transit Compass 0-360

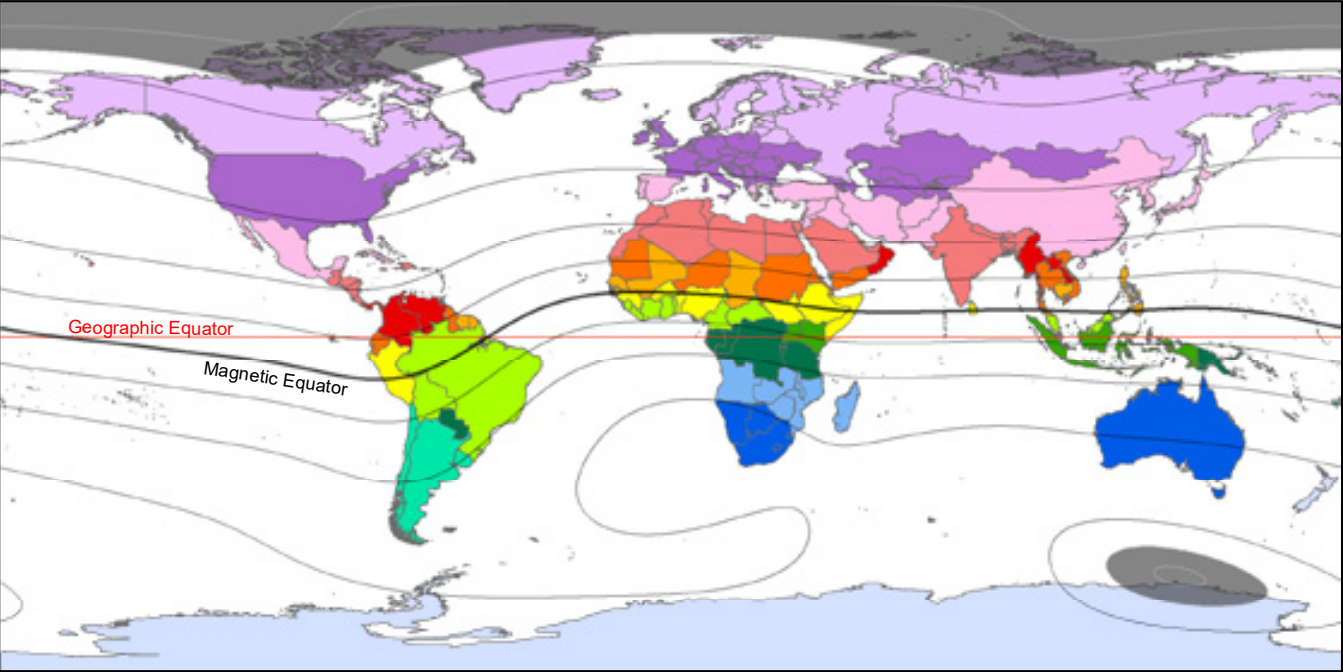
- Lid rotates around major and minor axes to provide a multitude of measuring capabilities.
- Hollow hinge doubles as sighting tube.
- Only one measurement configuration is necessary to determine strike and dip, trend and plunge, and bearing and vertical angle.
- Compass North is oriented parallel to the main hinge axis making the AXIS the only transit capable of measuring strike and dip simultaneously through contact or sighting methods.
- Lid protractor and 360° rotation around the minor axis provide accurate, concurrent trend and plunge measurements on any surface- also overhangs.
- Needle-locking mechanism, induction dampening for fast stabilisation, magnetic adjustment for east or west declination settings to ±180°.
- Machined from 6061 T6 Aluminium Billet and features O-rings for waterproof protection.
- Hinge Clinometer (Dip Angle) Accuracy: ±1° with 2° graduations.
- Inclinometer Accuracy: ±0.5° with 1° graduations.
- Lid Protractor Accuracy: ±0.5° with 1° graduations.
- Magnetism: NdFeB rare earth magnet on sapphire jewel suspension.
- Dimensions (Closed): 3.92” x 2.78” x 1.125”.
- Weight: 12.9 oz.



SKU	ZONE
1119-15012+010	Zone A
1119-15012-000	Zone B
1119-15012-010	Zone C
1119-15012-020	Zone D
1119-15012-030	Zone E
1119-15012-040	Zone F
1119-15012-050	Zone G
1119-15012-060	Zone H
1119-15012-070	Zone I
1119-15012-080	Zone J
1119-15012-090	Zone K
1119-15012-100	Zone L
1119-15012-110	Zone M
1119-15012-120	Zone N
1119-15012-130	Zone O

Compasses & Clinos

Brunton Transit Needle Balance Zones



Contours show WMM 2020 Inclination Model from <https://www.ngdc.noaa.gov/geomag/WMM/DoDWMM.shtml> in 20 degree contours

Northern Magnetic Hemisphere:
N-seeking needle points down into surface

Southern Magnetic Hemisphere:
N-seeking needle points up away from surface

Map Datum: WGS_84
Map Created in February 2021
by Lauren Heerschap

Balance Zones: Part Number, Needle Adjustment, and Hemisphere			
Black Out Zones	D -020, 2°, N	H -060, 6°, S	L -100, 10°, S
A +010, 1.0° up, N	E -030, 3°, N	I -070, 7°, S	M -110, 11°, S
B -000, 0°, N	F -040, 4°, N	J -080, 8°, S	N -120, 12°, S
C -010, 1°, N	G -050, 5°, N	K -090, 9°, S	O -130, 13°, S

NORTHERN NEEDLE

A +010

Belarus, Canada, Denmark, Estonia, Finland, Greenland, Iceland, Latvia, Lithuania, Norway, Russia, Sweden, US State: Alaska

B -000

Albania, Andorra, Armenia, Austria, Azerbaijan, Belgium, Bosnia & Herz., Bulgaria, Croatia, Czech Republic, England (UK), France, Georgia, Germany, Great Britain (UK), Hungary, Ireland, Italy, Kazakhstan, Kyrgystan, Liechtenstein, Luxembourg, Macedonia, Moldova, Monaco, Mongolia, Montenegro, Netherlands, N. Ireland, Poland, Romania, San Marino, Scotland (UK), Serbia, Slovakia, Slovenia, Switzerland, Tajikistan, Turkmenistan, Ukraine, United Kingdom, United States, Uzbekistan, Wales (UK)

C -010

Afghanistan, Bahamas, Cayman Islands, China, Cuba, Cyprus, Greece, Iran, Iraq, Israel, Japan, Jordan, Kuwait, Lebanon, Malta, Mexico, North Korea, Pakistan, Palestinian Terr., Portugal, South Korea, Spain, Syria, Taiwan, Turkey, Turks & Caicos Islands

D -020

Antigua & Barbuda, Algeria, Bahrain, Belize, Bhutan, British Virgin Islands, Costa Rica, Dominican Republic, Egypt, El Salvador, Guatemala, Haiti, Honduras, India, Jamaica, Libya, Martinique, Morocco, Nepal, Nicaragua, Qatar, Saudi Arabia, St. Kitts & Nevis, St. Martin, Tunisia, United Arab Emirates, Western Sahara

E -030

Bangladesh, Barbados, Colombia, Dominica, Grenada, Laos, Oman, Panama, St. Lucia, St. Vincent & the Grenadines, Trinidad & Tobago, Venezuela

F -040

Burma, Ecuador, Eritrea, Guyana, Mauritania, Myanmar, Niger, Sudan, Vietnam, Yemen

G -050

Cambodia, Cape Verde, Chad, Djibouti, French Guiana, Guam, Mali, Marshall Islands, Philippines, Senegal, Suriname, Thailand

H -060

Brunei Darussalam, Burkina Faso, Ethiopia, Gambia, Guinea, Guinea-Bissau, Micronesia, Nigeria, Palau, Peru, Somalia, Sri Lanka

I -070

Benin, Bolivia, Brazil, Cameroon, Central African Republic, Cote d'Ivoire (Ivory Coast), Ghana, Kiribati, Liberia, Malaysia, Maldives, Nauru, Sierra Leone, Singapore, South Sudan, Togo

J -080

Indonesia, Kenya, Tuvalu, Uganda

K -090

Burundi, Congo, Dem. Rep. Congo, East Timor, Equatorial Guinea, French Polynesia, Gabon, Papua New Guinea, Paraguay, Rwanda, Samoa, Sao Tome & Principe, Seychelles, Solomon Islands, Tanzania, Zaire

SOUTHERN NEEDLE

L -100

Argentina, Chile, Comoros, Fiji, Tonga, Uruguay, Vanatu

M -110

Angola, Madagascar, Malawi, Mauritius, Mozambique, New Caledonia, Zambia, Zimbabwe

N -120

Australia, Botswana, Lesotho, Namibia, South Africa, Swaziland

O -130

Antarctica, New Zealand

Check our website for a detailed list of Brunton Transit Needle Balance Zones

Compasses & Clinos

Brunton TruArc15 Mirror Compass Global Needle

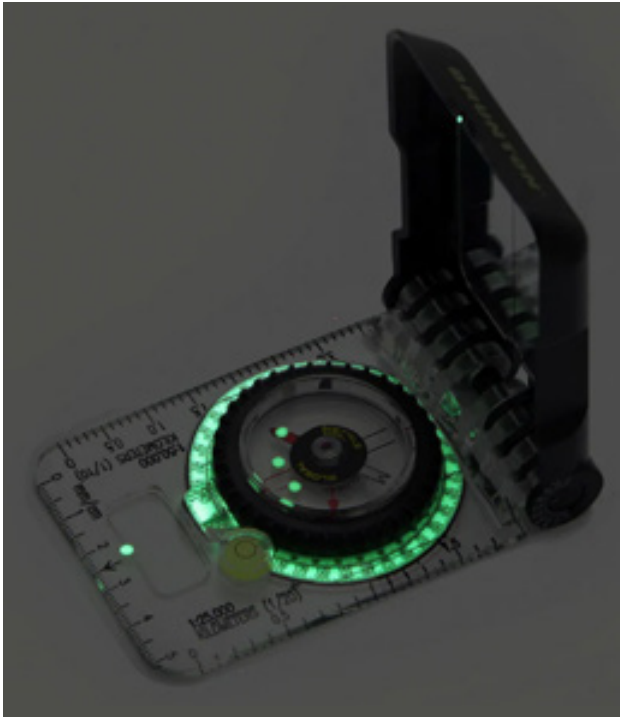
- Global Zone Compass.
- Drawing: upon our classic 15TDCL, the all new TruArc™ 15 is upgraded with a full coverage mirror cover for extra protection, and the TruArc™ Global Needle system with Ever-North™ rare earth magnets.
- The high-visibility cling lends low-light and night time performance, and the triple clinometers system gives fast and accurate reference information for avalanche safety or earth-science field work.
- Dimensions: 101.6 x 63 x 15mm / 4 x 2.5 x 0.6”.
- Weight: 91g / 3.2oz.
- Features: TruArc™ Global Needle; Ever-North Magnet; Map Magnifier; Sighting Mirror; Bubble Level; Clinometer; Magnified Readout; 1° Resolution.

SKU
1119-00005



Brunton TruArc15 Mirror Compass Global Needle - Luminescence

- TruArc™ Global Needle tilts up to 20°for balanced use worldwide.
- Tool-free declination adjustment is simple and fast to orient magnetic north to true north.
- Meridian lines on vial assist during pre-trip planning when aligning with map grid lines.
- Inch/millimeter scales for accurate and map work
- Travel a bearing well after dark, the luminous azimuth ring, magnetic needle, direction of travel arrow, and sight will glow brightly for up to 8 hours.
- Brunton EverNorth Magnet resists demagnetization over time.
- Magnified readout provides the highest degree of accuracy without compromising readability.
- Dual azimuth ring includes reverse azimuth
- The sighting mirror and sighting line are integrated into the cover. Align for the most accurate bearings, whether taking or following a bearing.
- Clinometer with 2°resolution for measuring slope angle or gauging heights of passes, peaks, or trees.
- Engineer’s ruler.
- Map magnifier helps with the litte details on any map.
- Bubble level for absolute precision readings; keeping the compass level (not the needle level) is a critical aspect for taking accurate bearings.
- High visibility cling for enhanced performance in low light; can be removed to facilitate map use.



SKU
1119-00005-GLOW

Specification

- dimensions: 4” x 2.5” x 0.6” | 10.16 x 6.3 x 1.5cm
- weight: 3.2 oz | 91 g
- resolution: 1°Resolution

Compasses & Clinos

Brunton Mount Ball & Socket

Attach the non-magnetic Ball & Socket mount to any pocket transit and tripod or monopod for extremely accurate azimuth and inclination reading. Aluminium & brass construction. Standard 1/4 - 20 thread. Fits Brunton transits exclusively.



SKU
1119-03060



SKU
1119-03040

Brunton Thimble

The Jacob Staff Thimble holds a transit steady and off the ground. It can be attached to the Ball and Socket Mount and it fits most wooden staffs with tapered ends. Standard +/-20 thread. Use with Ball & Socket mount.

Brunton Tripod Non-Magnetic

Professional instruments reach ultimate accuracy with the stability of this easy-to-use tripod. Non-magnetic materials ensure zero interference.

- Adjustable from 19" to 48"
- Aluminium & brass construction
- Standard +/- 20 thread
- 2-section adjustable legs
- Pointed tips at the end for no-slip use
- Use with Ball & Socket mount



SKU	WEIGHT
1119-03051	680g / 24oz

Brunton Leather Transit Case

Protect your handmade masterpiece with our tough leather case. Attach it to your belt with the belt loop attachment on back.

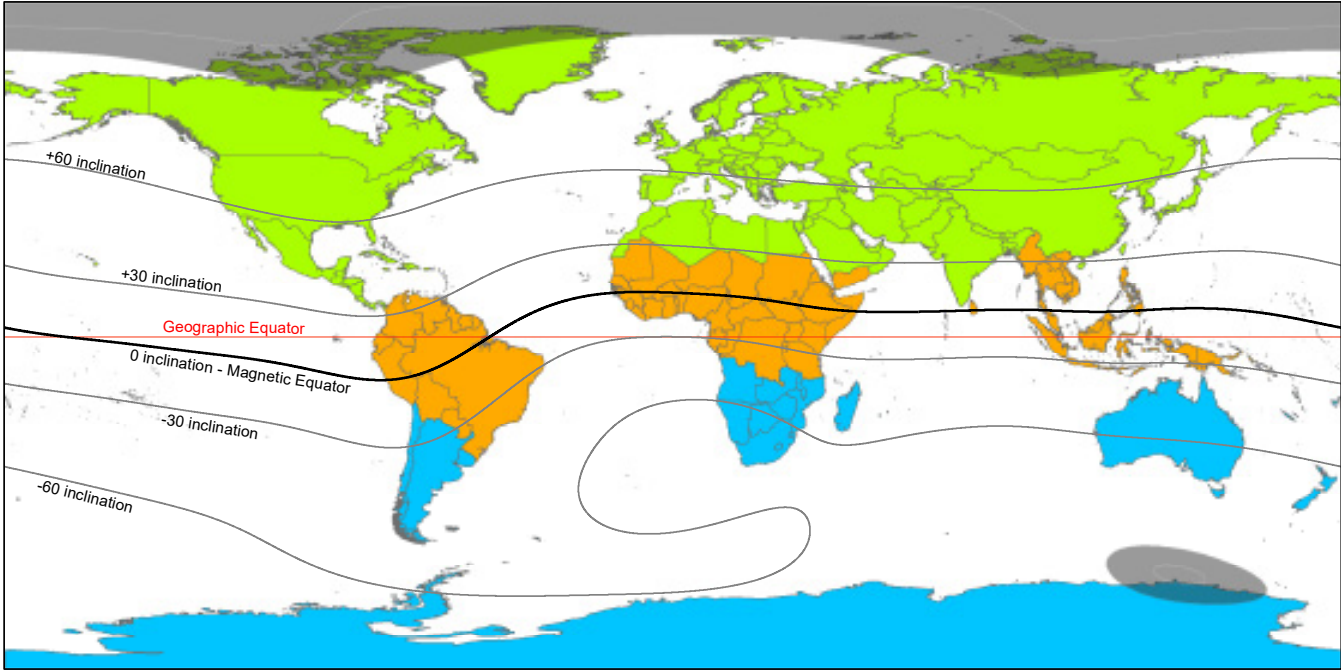
- Genuine leather for durability
- Nylon stitching and a brass closure snap
- Fits all transits except Geo
- Belt strap



SKU
1119-05130

Compasses & Clinos

Brunton OmniSight and GeoLite Magnetic Zones



OmniSight and GeoLite Magnetic Zones

Northern Hemisphere Needle - ideal north of +30 inclination, functional down to 0

Equatorial Needle - ideal between +30 and -30, functional between +60 and -60

Southern Hemisphere Needle - ideal south of -30 inclination, functional up to 0

Black Out Zones - magnetic compass needles lose functionality



SKU	ZONE
1119-00001	Zone 1
1119-00002	Zone 2
1119-00003	Zone 3

Brunton Omni-Sight Sighting Compass

With both forward and reciprocal bearings, plus 90° quadrants and 6400 point MILS, the OMNI-SIGHT spot-through compass offers the convenience of multiple precision instruments in one hand-held unit.

- Steadfast Aluminium housing ensures ruggedness and reliability, and the internal rare-earth magnet guarantees accuracy and resists magnetic interference
- Illuminated Readout: Light piping gives a clear bright readout even in lowlight
- Rare Earth Magnet: Resists magnetic interference and will not lose polarity
- All-In-One Scales: 360° azimuth, reciprocal bearing, quadrants, MILS
- Dimensions: 63.5 x 81.3 x 12.7mm/ 2.5 x 3.5 x 0.5"
- Weight: 334.5g / 11.8oz
- Features: -1° resolution

Compasses & Clinos

Brunton Omni-Slope Sighting Clinometer

The ultimate forestry instrument, the OMNI-SLOPE inclinometer measures angles in degrees, percent grade and the 66 foot forestry chain. The lightweight Aluminium housing lends years of field reliability, and the precision pendulum give fast and accurate readings weather you’re gauging the height of a tree, measuring avalanche danger, or judging the pitch of a cave. Illuminated Readout: Light piping gives a clear bright readout even in lowlight.

- Precision Pendulum: Fast, accurate, smooth, dead-on. 180° range
- All-In-One Scales: Degrees, percent grade, forestry chain, 1 degree resolution
- Dimensions: 63.5 x 81.3 x 12.7mm/ 2.5 x 3.5 x 0.5"
- Weight: 334.5g / 11.8oz
- Features: -1° resolution



SKU
1119-00006

Brunton Compass Geo Lite Transit

A geology-specific baseplate compass, for students and field geologists who prefer a lightweight option or need an effective backup compass for backcountry work. The Geo Lite Transit offers all of the precision of a traditional Brunton Transit, in a smaller and lighter footprint:

- Based on the functionality and features set of the Geo Transit, the Geo Lite offers two clinometers.
- The plumb-style or the hinge option allows for dip/dip azimuth measurements.
- The integrated protractor helps the field operators plot data while mapping.
- Made with a traditional clear baseplate, but hot-stamped for added durability, the flat base allows for an accurate strike and dip measurements at any angle (even low angles).
- The lid is crafted from recycled glass-filled PA increasing durability and shelf life.
- All transits and the bulk of compasses are designed, developed, hand-built, and sold across the world.

Specification

- Dimensions: 4" x 2.5" x 0.6" | 10.16 x 6.3 x 1.5cm
- Weight: 3.2oz | 68g
- Azimuth: +/- 1°w/ 2°graduations
- Hinge clinometer: +/-2.5°w/ 5°graduations
- Internal clinometer: +/-2.5°w/ 5°graduations
- Declination adjustment: +/-180°



SKU	ZONE
1119-05030-NH	Northern Hemisphere Balance
1119-05030-E	Equator Balance
1119-05030	Southern Hemisphere Balance

Compasses & Clinos

Freiberg Model Comparison Chart

Type/Features	Geologist's Compass	Geologist's Compass with Mirror	Mirror Compass with Collimator
Compass Circle Diameter	45mm		
Compass Scale Value	2° (2gon)		
Compass Estimation	0.5° (0.5gon)		
Azimuth Diameter	22mm		
Azimuth Scale Value	5° (5gon)		
Azimuth Estimation	1° (1gon)		
Clinometer Measuring Range	+90° (+100gon)		
Clinometer Scale Value	2° (2gon)		
Clinometer Estimation	0.5° (0.5gon)		
Contact Edge Graduated Length	70mm		
Contact Edge Scale Value	1mm		
Initial oscillation time of the magnetic needle	<50 sec		
Accuracy of direction reading	+0.5° (+0.5gon)		
Declination optional	Optional		
Tilting range of the dip measuring plate	225° (250gon)		
Circular level	ca. 40´		
Tabular level	ca. 60´		
Collimator	N/A	N/A	Yes
Mirror	N/A	Yes	
Weight	0.280kg		
Dimensions	93 x 76 x 22mm		

Freiberg Compass Case

Protect your handmade masterpiece with our tough leather case. Attach it to your belt with the belt loop attachment on back. Genuine leather for durability.

SKU
1121-10006



Compasses & Clinos

Freiberg Geologist Compass

- General field-geological work
- Special structural-geological, deposit-tectonic, and engineering-geological rockmechanical work
- Can be used for route surveying, for the survey of natural and artificial openings above and below ground
- For staking out and dimensioning holes
- For the transfer of geological data into maps and plans
- Rockwork as well as moderate-accuracy surveying
- Ground magnetic needle placed on edge.
- Permanent locking of the magnetic system - can be released during measurement by depressing the push-button and should be used for shortening the setting time
- Easy adjustment of the graduated circle - for each measuring technique and for setting declination values of any magnitude
- Lockable inclinometer for inclination measurements of high accuracy
- Colour coding on circle of altitude and magnetic needle (according to Clar) - unambiguous determination of the direction of dip of geological formations
 - Circular spirit level for levelling, lateral glass tube for measurement at points of difficult access

Dip measuring plate

- Reading of dip angle
- Protection for the glass cover

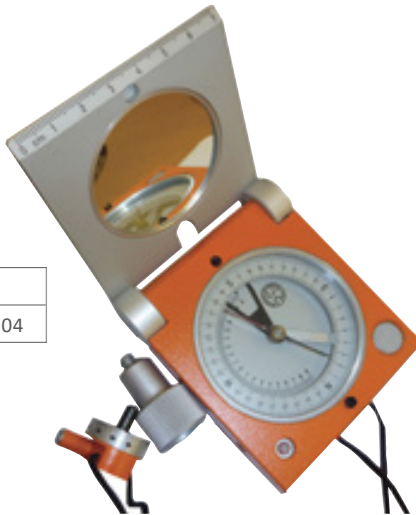
Freiberg Mirror Compass with Collimator

- Facilitates direction and inclination measurements for reconnaissance.
- The measurement of minor compass traverses.
- Orientation in the terrain.
- General field-geological work.
- Mirror on the internal surface of the dip measuring plate for observing and reading the magnetic needle and graduated circle for different targets.
- Notch and bead sights for nearly horizontal sightings in the terrain.
- Collimator sighting arrangement.
- For any inclined aiming at terrain spots.
- For the direct combination of inclination and directionmeasurements for topographic sighting
- High pointing accuracy.
- Thanks to the collimation principle the sighting is independent of the power of accommodation of the observer's eyes.
- Easy to detach if not used.
- Ground magnetic needle placed on edge.
- Permanent locking of the magnetic system - can be released during measurement by depressing the push-button and should be used for shortening the setting time.
- Easy adjustment of the graduated circle



SKU	DESCRIPTION
1121-10005	No Mirror
1121-10003	With Mirror

*Compass Leather Case included.



SKU
1121-10004

- Lockable inclinometer for inclination measurements of high accuracy.
- Colour coding on circle of altitude and magnetic needle (according to Clar) - unambiguous determination of the direction of dip of geological formations
 - Circular spirit level for levelling, lateral glass tube for measurement at points of difficult access

Dip measuring plate

- Reading of dip angle
- Protection for the glass cover

Compasses & Clinos

Suunto KB-14 360Q Compass Chart

Features	KB-14/360Q G Compass
Glass material	Acrylic
Declination correction	None
Weight	93g / 3.28oz
Battery type	No battery required
Tripod mount	Yes
Conversion table	Cotangent 0-45°
Carrying pouch	Yes
Attachment	Lanyard
Direction scale	Quadrant degrees
Needle	Card
Globally balanced	Yes
Liquid filled and jewel bearing	Yes
Adjustable optics	Yes
Compass accuracy	1/3°
Compass resolution	1/2°
Storage temperature	-30°C to +60°C / -22°F to +140°F
Operating temperature	-30°C to +60°C / -22°F to +140°F
Sighting	Optics

Suunto KB-14 360Q G Compass

- Accuracy 1/3°
- Graduation interval 1°
- Scale: Quadrant°
- Adjustable diopter
- Sapphire bearing
- Liquid filled capsule for stable operation
- Anodized light-alloy housing
- Nylon pouch with belt-loop
- Lanyard
- Made in Finland
- Measurements: 52 x 77 x 15 mm / 2.05 x 3.03 x 0.59 "
- Weight: 93 g / 3.28 oz
- Glass material: Acrylic
- What's in the box: Suunto KB-14/360Q G Compass, lanyard, nylon pouch, quick guide.

SKU	TYPE
1123-00007	KB-14/360Q G, Without Declination Adjustment
SC	Suunto Compass Rubber Cover



Compasses & Clinos

Suunto KB-14 360R Compass Chart

Features	KB-14/360R G Compass
Glass material	Acrylic
Declination correction	None
Weight	93g / 3.28oz
Battery type	No battery required
Tripod mount	Yes
Conversion table	Cotangent 0-45°
Carrying pouch	Yes
Attachment	Lanyard
Direction scale	Degrees
Needle	Card
Globally balanced	Yes
Liquid filled and jewel bearing	Yes
Adjustable optics	Yes
Compass accuracy	1/3°
Compass resolution	1/2°
Storage temperature	-30°C to +60°C / -22°F to +140°F
Operating temperature	-30°C to +60°C / -22°F to +140°F
Sighting	Optics

Suunto KB-14 360R Compass

- Accuracy 1/3°
- Graduation interval 0.5°
- Scale: Azimuth 360°, Reversed 360°
- Adjustable diopter
- Sapphire bearing
- Liquid filled capsule for stable operation
- Anodized light-alloy housing
- Nylon pouch with belt-loop
- Lanyard
- Made in Finland
- Measurements: 52 x 77 x 15 mm / 2.05 x 3.03 x 0.59 "
- Weight: 93 g / 3.28 oz
- Glass material: Acrylic
- What's in the box: Suunto KB-14/360R G Compass, lanyard, nylon pouch, quick guide.

SKU	TYPE
1123-00004	KB-14/360R G, Without Declination Adjustment
SC	Suunto Compass Rubber Cover



Compasses & Clinos

Suunto Tandem 360PC/360R Clino Compass Comparison Chart

Type/Features	360PC/360R G Clino Compass
Glass Material	Acrylic
Declination correction	None
Weight	177g / 6.24oz
Battery type	No battery required
Tripod mount	Yes
Conversion table	Cosine 0-45° Cotangent 0-45°
Carrying pouch	Yes
Attachment	Lanyard
Direction scale	Degrees
Needle	Card
Globally balanced	Yes
Liquid filled & jewel bearing	Yes
Adjustable optics	Yes
Compass accuracy	1/3°
Compass resolution	1/2°
Storage temperature	-30°C to +60°C / -22°F to +140°F
Operating temperature	-30° C to +60°C / -22°F to +140°F
Sighting	Optics
Clinometer	Yes
Adjustable optics	Yes
Jewel bearing	Yes
Liquid filled	Yes
Clinometer scales	0 ± 90°, 0 ± 150%
Inlcination accuracy	1/4°
Inclination resolution	1° and 1%

Suunto Tandem 360PC/360R Clino Compass

- Measurements: 126 x 76 x 15 mm / 4.96 x 2.99 x 0.59 "
- Weight: 177 g / 6.24 oz
- Glass material: Acrylic
- What's in the box: Suunto Tandem/360PC/360R DG Clino/Compass, lanyard, nylon pouch, quick guide.

Clinometer

- Accuracy 1/4°
- Graduation interval 0.5°
- Scale: slope ±90°, slope %
- Adjustable diopter
- Dual sapphire bearing
- Liquid filled capsule for stable operation

Compass

- Accuracy 1/3°
- Graduation interval 0.5°
- Scale: Azimuth 360°, Reversed 360°
- Adjustable diopter
- Sapphire bearing
- Liquid filled capsule for stable operation
- Anodized light-alloy housing
- Nylon pouch with belt-loop

Suunto PM-5/360 PC Clinometer

- Accuracy 1/4°
- Graduation interval 0.5°
- Scale: slope ±90°, slope %
- Adjustable diopter
- Dual sapphire bearing
- Liquid filled capsule for stable operation
- Anodized light-alloy housing
- Nylon pouch with belt-loop
- Lanyard
- Measurements: 52 x 77 x 15 mm / 2.05 x 3.03 x 0.59 "
- Weight: 94 g / 3.32 oz
- Glass material: Acrylic
- What's in the box: Suunto PM-5/360 PC Clinometer, lanyard, nylon pouch, quick guide



SKU	DESCRIPTION
1123-00013	Suunto PM-5/360 PC Clinometer
SC	Suunto Compass Rubber Cover



SKU	TYPE
1123-00003	360PC/360R G, Without Declination Adjustment
1123-00008	Suunto Tandem Cover

Compasses & Clinos

Suunto KB-20/360R G Yellow Compass

- Accuracy 0.5°
- Graduation interval 1°
- Scale: Azimuth 360°, Reversed 360°
- Adjustable diopter
- Sapphire bearing
- Liquid filled capsule for stable operation
- Plastic housing
- Floating
- Lanyard
- Made in Finland
- Measurements: 78 x 57 x 20 mm / 3.07 x 2.24 x 0.79 "
- Weight: 36 g / 1.27 oz
- Glass material: Acrylic
- Case material: Plastic
- What's in the box: Suunto KB-20/360R G yellow compass with lanyard, quick guide.



SKU
1123-00006

Suunto MC-2 Mirror Compass Global Needle

- Fast globally balanced needle with jewel bearing.
- 20 degrees tilt margin for easier readings
- Adjustable declination correction
- Liquid filled capsule for stable operation
- Mirror for sighting bearings and signalling
- Sighting hole and notch for accurate bearings.
- Clinometer
- Luminescent markings for working in low light
- Metric UTM scales and inch ruler
- Baseplate with magnifying lens
- Detachable snap-lock lanyard with wrist-lock. Easy to detach for working with the map.
- Made in Finland
- Measurements: 65 x 101 x 18 mm / 2.56 x 3.98 x 0.71 "
- Weight: 75 g / 2.65 oz
- Bezel material: Plastic
- What's in the box: Suunto MC-2 G Mirror Compass, lanyard with wrist-lock and declination correction tool, quick release, quick guide.
- TruArc™ Global Needle
- Inch/metric scale: 1° resolution, map lines
- Tool-free declination adjustment
- Dual inclinometer function
- Ergonomic baseplate magnifier
- Ever-North™ magnet



SKU	TYPE
1123-00015	Bubble
1123-00014	No Bubble



Perth Main Warehouse

66 Truganina Rd, Malaga,
Western Australia 6090
+61 (0) 8 9209 8500
perth@westernex.com.au

Kalgoorlie Warehouse

18 Kinclaven Way, Broadwood,
Kalgoorlie, Western Australia 6430
+61 (0) 8 9091 1152
kalgoorlie@westernex.com.au

Brisbane Warehouse

14 Hasp St, Seventeen Mile Rocks,
Queensland 4073
+61 (0) 7 3376 2422
brisbane@westernex.com.au

Mt Isa Warehouse

13 Ryan Rd, (Entry off Davis Rd)
Mt Isa, Queensland 4825
+61 (0) 7 4743 2122
mtisa@westernex.com.au

Orange Warehouse

72 Astill Drive, Orange,
NSW, 2800
+61 (0) 7 3376 2422
brisbane@westernex.com.au

