

Core Tray Metal



Core Tray Metal

U-Build-It Metal Core Tray



1. Tray and Parts



2. Drill rivet holes

Designed for export, U-Build-It Core Trays save space. Once assembled, U-Build-It Core Trays may be easily stacked without the need for racking. They also save space when transporting on pallets and in containers. Also available as non-stackable.



3. Rivet



4. Ready to use

ASSEMBLY: Supplied in kit form with a drill bit and rivets, the prefabricated end pieces are assembled using a Drill and Rivet Gun.
STURDY: U-Build-It Trays are made from high quality Aluzinc.
SIZE: U-Build-It Trays are available in a wide range of sizes. Please note: Drill and Rivet Gun not supplied.

U-Build-It Standard

SKU	TYPE	CORE DIAMETER	MATERIAL	SIZE	ROWS	METRES	PALLET CONFIGURATIONS - PACKED ON PALLET BOXES			
							QTY	PALLET SIZE	UNIT (kg)	WEIGHT (kg)
1128-01051	NQ2	50.60	AluZinc	1000 x 400mm	7	7	180	1100 x 1100 x 990mm	2.23	416
1128-01050	HQ	63.50	AluZinc	1000 x 400mm	5	5	140	1100 x 1100 x 990mm	2.24	329
1128-01052	PQ	85.00	AluZinc	1000 x 400mm	4	4	56	1100 x 1100 x 990mm	2.83	173



U-Build-It Stackable

SKU	TYPE	CORE DIAMETER	MATERIAL	SIZE	ROWS	METRES	PALLET CONFIGURATIONS - PACKED ON PALLET BOXES			
							QTY	PALLET SIZE	UNIT (kg)	WEIGHT (kg)
1128-01053	NQ2	50.60	AluZinc	1000 x 400mm	7	7	180	1100 x 1100 x 990mm	2.23	416
1128-01054	HQ	63.50	AluZinc	1000 x 400mm	5	5	140	1100 x 1100 x 990mm	2.24	329
1128-01055	PQ	85.00	AluZinc	1000 x 400mm	4	4	56	1100 x 1100 x 990mm	2.83	173

Core Tray Accessories

Polystyrene Cylinder

These are used to fill gaps between samples. Using marking pen to record missing meters. Cut to desired lengths. Each split cylinder consists of a pair of halves.

Whole Cylinders

SKU	DESCRIPTION	SIZE (DxL)
1124-01002	B	36mm x 1000mm
1124-01003	N	47mm x 1000mm
1124-01004	H	63mm x 1000mm
1124-01000	P	85mm x 1000mm



Split Cylinders

SKU	DESCRIPTION	SIZE (DxL)
1124-01002-HALF	B	36mm x 1000mm
1124-01003-HALF	N	47mm x 1000mm
1124-01004-HALF	H	63mm x 1000mm
1124-01000-HALF	P	85mm x 1000mm



Wally Block Wooden

These blocks are used as spacers when separating core.

SKU	SIZE
1124-00410	B
1124-00411	N2
1124-00412	H



Plastic Core Block Universal

Yellow core blocks, depth, loss/gain/core recovered.

SKU
1124-00400



Core Block Wooden with/without Perma Tag

Our wooden core blocks have been designed to fit snugly into your core tray, the top side has a smooth surface allowing you to write hole details.

SKU	DESCRIPTION	SIZE
1124-00420	Core Block Wooden	B
1124-00425	Core Block Wooden	N
1124-00422	Core Block Wooden	H
1124-00427	Core Block Wooden	P
1124-00421	Core Block Wooden w/ Perma Tag	B
1124-00426	Core Block Wooden w/ Perma Tag	N
1124-00423	Core Block Wooden w/ Perma Tag	H
1124-00428	Core Block Wooden w/ Perma Tag	P



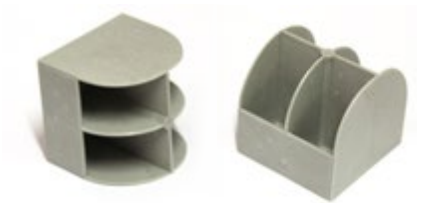
Core Tray Accessories

Recycled Plastic Core Blocks

Westernex new recycled core blocks are a great alternative to our original wooden style core block.

These new blocks are:

- Easy to write on.
- Weather resistant and long lasting.
- They sit firm within the channel.
- These blocks look great inside the tray - meaning your core photography will look better than ever.
- Available in all sizes – BQ, NQ, HQ and PQ to suit all tray sizes and in stock now.



SKU
1124-00500-BQ
1124-00500-NQ
1124-00500-HQ
1124-00500-PQ



Pallet Plastic

- Weight: 24.3kg
- Material: 100% recycled HDPE
- Static Load: 10000kg
- Dynamic Load: 2000kg
- Entry Points: 2 way fork lift, 2 way pallet jack

SKU	SIZE
1213-00046	1165 x 1165 x 150mm



Carton Box to suit Core Trays

SKU	SIZE
CTN1075475	1075 x 475 x 390mm



Westernex also supplies a wide range of marking stationery. Please see our Office Supplies and Marking sections.



Perth Main Warehouse

66 Truganina Rd, Malaga,
Western Australia 6090
+61 (0) 8 9209 8500
perth@westernex.com.au

Kalgoorlie Warehouse

18 Kinclaven Way, Broadwood,
Kalgoorlie, Western Australia 6430
+61 (0) 8 9091 1152
kalgoorlie@westernex.com.au

Brisbane Warehouse

14 Hasp St, Seventeen Mile Rocks,
Queensland 4073
+61 (0) 7 3376 2422
brisbane@westernex.com.au

Mt Isa Warehouse

13 Ryan Rd, (Entry off Davis Rd)
Mt Isa, Queensland 4825
+61 (0) 7 4743 2122
mtisa@westernex.com.au

Orange Warehouse

72 Astill Drive, Orange,
NSW, 2800
+61 (0) 7 3376 2422
brisbane@westernex.com.au

