

Core Tray Plastic



Core Tray Accessories

Polystyrene Cylinder

These are used to fill gaps between samples. Using marking pen to record missing meters. Cut to desired lengths. Each split cylinder consists of a pair of halves.

Whole Cylinders

SKU	DESCRIPTION	SIZE (DxL)
1124-01002	B	36mm x 1000mm
1124-01003	N	47mm x 1000mm
1124-01004	H	63mm x 1000mm
1124-01000	P	85mm x 1000mm



Split Cylinders

SKU	DESCRIPTION	SIZE (DxL)
1124-01002-HALF	B	36mm x 1000mm
1124-01003-HALF	N	47mm x 1000mm
1124-01004-HALF	H	63mm x 1000mm
1124-01000-HALF	P	85mm x 1000mm



Wally Block Wooden

These blocks are used as spacers when separating core.

SKU	SIZE
1124-00410	B
1124-00411	N2
1124-00412	H



Plastic Core Block Universal

Yellow core blocks, depth, loss/gain/core recovered.

SKU
1124-00400



Core Block Wooden with/without Perma Tag

Our wooden core blocks have been designed to fit snugly into your core tray, the top side has a smooth surface allowing you to write hole details.

SKU	DESCRIPTION	SIZE
1124-00420	Core Block Wooden	B
1124-00425	Core Block Wooden	N
1124-00422	Core Block Wooden	H
1124-00427	Core Block Wooden	P
1124-00421	Core Block Wooden w/ Perma Tag	B
1124-00426	Core Block Wooden w/ Perma Tag	N
1124-00423	Core Block Wooden w/ Perma Tag	H
1124-00428	Core Block Wooden w/ Perma Tag	P



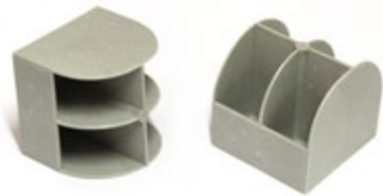
Core Tray Accessories

Recycled Plastic Core Blocks

Westernex new recycled core blocks are a great alternative to our original wooden style core block.

These new blocks are:

- Easy to write on.
- Weather resistant and long lasting.
- They sit firm within the channel.
- These blocks look great inside the tray - meaning your core photography will look better than ever.
- Available in all sizes – BQ, NQ, HQ and PQ to suit all tray sizes and in stock now.



SKU
1124-00500-BQ
1124-00500-NQ
1124-00500-HQ
1124-00500-PQ



Pallet Plastic

- Weight: 24.3kg
- Material: 100% recycled HDPE
- Static Load: 10000kg
- Dynamic Load: 2000kg
- Entry Points: 2 way fork lift, 2 way pallet jack

SKU	SIZE
1213-00046	1165 x 1165 x 150mm



Carton Box to suit Core Trays

SKU	SIZE
CTN1075475	1075 x 475 x 390mm



Westernex also supplies a wide range of marking stationery. Please see our Office Supplies and Marking sections.

Core Tray Plastic

Impala 1 Tray

All Impala 1 core trays were designed for maximum core storage per tray and its nesting capabilities make it ideal for export.



- Grey:** Often preferred for photography, also reduces glare
- White:** Heightens contrast in photography
- Black:** Ideal for use with high-logger and CoreScan system

White colour ex stock. Grey or Black to manufacture.

Impala 1 Plastic Core Trays & Accessories

SKU	DESCRIPTION	SIZE
1126-30002-WHITE	Impala 1 Plastic Core Tray	B - 8 Row
1126-30003-WHITE	Impala 1 Plastic Core Tray	N2 - 6 Row
1126-30004-WHITE	Impala 1 Plastic Core Tray	H - 5 Row
1126-30005-WHITE	Impala 1 Plastic Core Tray	P - 4 Row
1124-00006	Core Tray Plastic Support Block	Impala 1 B
1124-00004	Core Tray Plastic Support Block	Impala 1 N2
1124-00003	Core Tray Plastic Support Block	Impala 1 H
1124-00007	Core Tray Plastic Support Block	Impala 1 P

The Impala core tray has all the obvious benefits of a plastic core tray – No sharp edges, non-magnetic & chemically inert, impervious to sulphide’s, UV stable, non-corroding & very smooth on roller conveyors. Available in high visibility white or trays may also be ordered in grey or black for less glare when photographing the core. A unique nesting design that reduces the freight cost and improves ease of use underground where space is limited. The nesting feature also facilitates improved transportation to site and reduces transit damage particularly in remote locations. The tray has also been designed for pallet stacking where bulk storage is required. When stacking Impala 1 Core Trays, you will need to use the Impala 1 Core Tray Blocks; these blocks may also be used as dividers as required.

Design and polypropylene material used create a lightweight nesting core tray that is also very robust. In addition the trays are UV protected, giving longer life in the field. All the major sizes are available – B, N2, H & P in 1000mm for clear 1 meter runs of core – B, N2, H are also available in 800mm lengths for reduced weight. There is also a B 700mm available for underground applications. All Impala 1 core trays were designed for maximum core storage per tray.

B Core Tray

- Overall Length: 1060mm
- Usable Length: 1020mm
- Width: 416mm
- Height: 47mm
- Weight: 2.04kg
- Core Capacity: 8 rows
- Pallet Quantity: 100
- Pallet Dims: 1100 x 1100 x 1070mm
- Pallet Weight: 224kg
- 20ft Container: 2100 trays
- 40ft Container: 4400 trays

N2 Core Tray

- Overall Length: 1064mm
- Usable Length: 1020mm
- Width: 414mm
- Height: 65mm
- Weight 2.2kg
- Core Capacity: 6 rows
- Pallet Quantity: 100
- Pallet Dims: 1100 x 1100 x 1070mm
- Pallet Weight: 240kg
- 20ft Container: 2100 trays
- 40ft Container: 4400 trays

H Core Tray

- Overall Length: 1060mm
- Usable Length: 1020mm
- Width: 414mm
- Height: 73mm
- Weight: 2.2kg
- Core Capacity: 5 rows
- Pallet Quantity: 100
- Pallet Dims: 1100 x 1100 x 1240mm
- Pallet Weight: 240kg
- 20ft Container: 2100 trays
- 40ft Container: 4400 trays

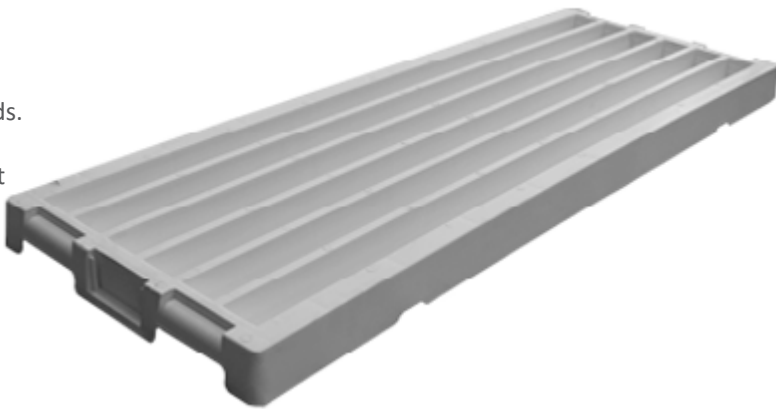
P Core Tray

- Overall Length: 1060mm
- Usable Length: 1020mm
- Width: 423mm
- Height: 95mm
- Weight: 2.36kg
- Core Capacity: 4 rows
- Pallet Quantity: 100
- Pallet Dims: 1100 x 1100 x 1430mm
- Pallet Weight: 256kg
- 20ft Container: 2100 trays
- 40ft Container: 4100 trays

Core Tray Plastic

Impala 2 Tray

Impala 2 trays are designed to cater to exploration needs. Hence, the underside of Impala 2 trays have been specifically designed to affix securely onto drill rods that sit atop trestle frames and other similar contraptions, setting it apart from other Impala plastic core trays.



- Grey:** Often preferred for photography, also reduces glare
- White:** Heightens contrast in photography
- Black:** Ideal for use with high-logger and CoreScan system

White colour ex stock. Grey or Black to manufacture.

Impala 2 Plastic Core Trays

SKU	DESCRIPTION	SIZE
1126-30009-WHITE	Impala 2 Plastic Core Tray	B - 6 Row
1126-30001-WHITE	Impala 2 Plastic Core Tray	N2 - 5 Row
1126-30000-WHITE	Impala 2 Plastic Core Tray	H - 4 Row
1126-30010-WHITE	Impala 2 Plastic Core Tray	P - 3 Row

Impala 2 Accessories

SKU	DESCRIPTION	SIZE
1126-30100-WHITE	Core Tray Plastic Lid	Impala 2 Trays
1124-00020	Impala ID Plate	Impala 2 Trays
1126-30103	Core Tray Plastic Clips	Impala 2 B + N2
1126-30102	Core Tray Plastic Clips	Impala 2 H
1126-30104	Core Tray Plastic Clips	Impala 2 P
1124-00002	Core Tray Plastic Marker	Impala 2 B
1124-00001	Core Tray Plastic Marker	Impala 2 N2
1124-00000	Core Tray Plastic Marker	Impala 2 H
1124-00005	Core Tray Plastic Marker	Impala 2 P



B Core Tray

- Overall Length: 1075mm
- Usable Length: 1010mm
- Width: 390mm
- Height: 53mm
- Weight: 2.7kg
- Core Capacity: 6 rows
- Pallet Quantity: 100
- Pallet Dims: 1100mm x 1100mm x 1660mm
- Pallet Weight: 290kg
- 20ft Container: 1520 trays
- 40ft Container: 3140 trays

N2 Core Tray

- Overall Length: 1075mm
- Usable Length: 1010mm
- Width: 390mm
- Height: 67mm
- Weight: 2.36kg
- Core Capacity: 5 rows
- Pallet Quantity: 102
- Pallet Dims: 1100mm x 1100mm x 2010mm
- Pallet Weight: 261kg
- 20ft Container: 1255 trays
- 40ft Container: 2580 trays

H Core Tray

- Overall Length: 1075mm
- Usable Length: 1010mm
- Width: 390mm
- Height: 80mm
- Weight: 2.44kg
- Core Capacity: 4 rows
- Pallet Quantity: 81
- Pallet Dims: 1100mm x 1100mm x 1980mm
- Pallet Weight: 218kg
- 20ft Container: 1060 trays
- 40ft Container: 2180 trays

P Core Tray

- Overall Length: 1075mm
- Usable Length: 1010mm
- Width: 390mm
- Height: 100mm
- Weight: 3.1kg
- Core Capacity: 3 rows
- Pallet Quantity: 63
- Pallet Dims: 1100mm x 1100mm x 1975mm
- Pallet Weight: 215kg
- 20ft Container: 730 trays
- 40ft Container: 1500 trays



Core Tray Plastic

Impala 3 Tray

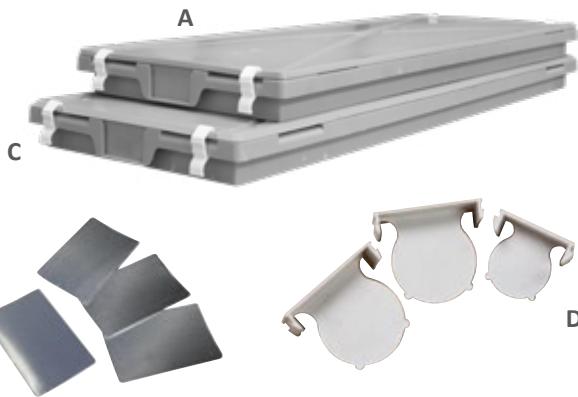
The preferred core tray for above-ground applications. Capable of storing full metres of core at a time.

- A strong, easy-to-handle and conveyor-friendly tray
- Designed to be the most stable tray when stacked
- Excellent sealing when trays are stacked to avoid contamination.
- Patent Rigid-based construction, allowing the tray to glide with minimum noise and in any direction on roller racking and directional transfer tables.
- Trays lock tightly together, which also gives superior stacking (with vertical wall-on-wall design).
- Drainage holes, deeper and wider finger recesses at the end of each row.
- Excellent strength in design for stacking securely onto pallets and enable banding without distortion.
- Wide ribs, giving more space for writing and marking.
- Core is properly cradled in the half-round sections to prevent rolling and damage.
- Trays lock together for safe, stable stacking.



Grey colour ex stock. White or Black to manufacture.

- Patented all-round grip bar making lifting easier while helping prevent wrist strain.
- Holders at each end designed to take normal labels or RFID tags.
- Manufactured in Impala’s fully equipped manufacturing facility using the latest equipment, so stock is always ready to go.
- Each row holds 1000mm of core, with recess for ease of access to remove, footprint for maximum storage is 1085mm x 390mm.



Grey: Often preferred for photography, also reduces glare
White: Heightens contrast in photography
Black: Ideal for use with high-logger and CoreScan system

Impala 3 Plastic Core Trays

SKU	DESCRIPTION	SIZE
1126-30301-GREY	Impala 3 Plastic Core Tray	N2 - 5 Row
1126-30302-GREY	Impala 3 Plastic Core Tray	H - 4 Row
1126-30303-GREY	Impala 3 Plastic Core Tray	P - 3 Row

Impala 3 Accessories

	SKU	DESCRIPTION	UOM
A	1126-30105-GREY	Core Tray Plastic Lid Impala 3	Each
B	1126-30304	Impala ID Plate	Hundred
C	1126-30102	Core Tray Plastic Clips	Each
D	1124-00001	Core Tray Plastic Marker N2	Hundred
	1124-00000	Core Tray Plastic Marker H	Hundred
	1124-00005	Core Tray Plastic Marker P	Hundred

N2 Core Tray

- Overall Length: 1085mm
- Usable Length: 1005mm
- Width: 390mm
- Height: 67mm
- Weight: 2.3kg
- Core Capacity: 5 rows
- Pallet Quantity: 102
- Pallet Dims: 1100 x 1100 x 2015mm
- Pallet Weight: 255kg
- 20ft Container: 1200 trays
- 40ft Container: 2530 trays

H Core Tray

- Overall Length: 1085mm
- Usable Length: 1005mm
- Width: 390mm
- Height: 75mm
- Weight: 2.3kg
- Core Capacity: 4 rows
- Pallet Quantity: 81
- Pallet Dims: 1100 x 1100 x 1990mm
- Pallet Weight: 206kg
- 20ft Container: 1070 trays
- 40ft Container: 2200 trays

P Core Tray

- Overall Length: 1085mm
- Usable Length: 1005mm
- Width: 390mm
- Height: 95mm
- Weight: 2.55kg
- Core Capacity: 3 rows
- Pallet Quantity: 63
- Pallet Dims: 1100 x 1100 x 1995mm
- Pallet Weight: 181kg
- 20ft Container: 715 trays
- 40ft Container: 1485 trays

The tray is manufactured in a material for temperate climates to +55°C as standard. Trays are also UV stabilised and protected, giving longer life in the field.

Core Tray Plastic

Impala 4 Tray

The preferred core tray for underground applications. Shorter and more lightweight for easy manual handling.

- A strong, easy-to-handle and conveyor-friendly tray.
- Designed to be the most stable tray when stacked
- Excellent sealing when trays are stacked to avoid contamination.
- Patent Rigid-based construction, allowing the tray to glide with minimum noise and in any direction on roller racking and directional transfer tables.
- Trays lock tightly together, which also gives superior stacking (with vertical wall-on-wall design).
- Drainage holes, deeper and wider finger recesses at the end of each row.
- Excellent strength in design for stacking securely onto pallets and enable banding without distortion.
- Wide ribs, giving more space for writing and marking
- Core is properly cradled in the half-round sections to prevent rolling and damage.
- Trays lock together for safe, stable stacking.
- Patented all-round grip bar making lifting easier while helping prevent wrist strain.



Grey colour ex stock. White or Black to manufacture.

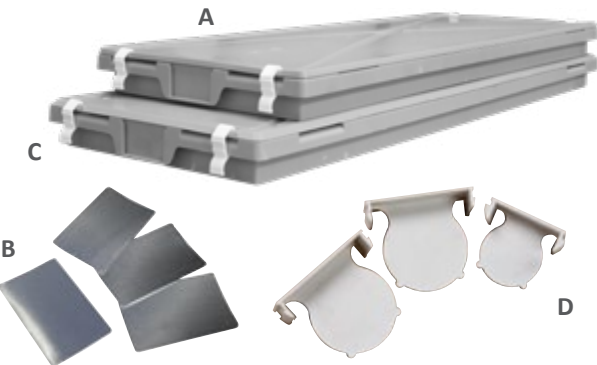
- Holders at each end designed to take normal labels or RFID tags.
- Manufactured in Impala’s fully equipped manufacturing facility using the latest equipment, so stock is always ready to go.
- Each row holds 920mm of core, with recess for ease of access to remove, smallest footprint for maximum storage of 1000mm x 390mm.

Check our Youtube channel to view our demonstration video.

SKU	DESCRIPTION	SIZE
1126-30401-GREY	Impala 4 Plastic Core Tray	N2 - 5 Row
1126-30402-GREY	Impala 4 Plastic Core Tray	H - 4 Row
1126-30403-GREY	Impala 4 Plastic Core Tray	P - 3 Row

Impala 4 Accessories

	SKU	DESCRIPTION	UOM
A	1126-30400-GREY	Core Tray Plastic Lid Impala 4	Each
B	1126-30304	Impala ID Plate Impala 4	Hundred
C	1126-30102	Core Tray Plastic Clips Impala 4	Each
D	1124-00001	Core Tray Plastic Marker N2	Hundred
	1124-00000	Core Tray Plastic Marker H	Hundred
	1124-00005	Core Tray Plastic Marker P	Hundred



Grey: Often preferred for photography, also reduces glare
White: Heightens contrast in photography
Black: Ideal for use with high-logger and CoreScan system

N2 Core Tray

- Overall Length: 1000mm
- Usable Length: 920mm
- Width: 390mm
- Height: 67mm
- Weight: 2.2kg
- Core Capacity: 5 rows
- Pallet Quantity: 102
- Pallet Dims: 1100 x 1100 x 2015mm
- Pallet Weight: 245kg
- 20ft Container: 1200 trays
- 40ft Container: 2530 trays

H Core Tray

- Overall Length: 1000mm
- Usable Length: 920mm
- Width: 390mm
- Height: 75mm
- Weight: 2.36kg
- Core Capacity: 4 rows
- Pallet Quantity: 81
- Pallet Dims: 1100 x 1100 x 1975mm
- Pallet Weight: 211kg
- 20ft Container: 1070 trays
- 40ft Container: 2200 trays

P Core Tray

- Overall Length: 1000mm
- Usable Length: 920mm
- Width: 390mm
- Height: 95mm
- Weight: 2.46kg
- Core Capacity: 3 rows
- Pallet Quantity: 63
- Pallet Dims: 1100 x 1100 x 1955mm
- Pallet Weight: 175kg
- 20ft Container: 715 trays
- 40ft Container: 1485 trays

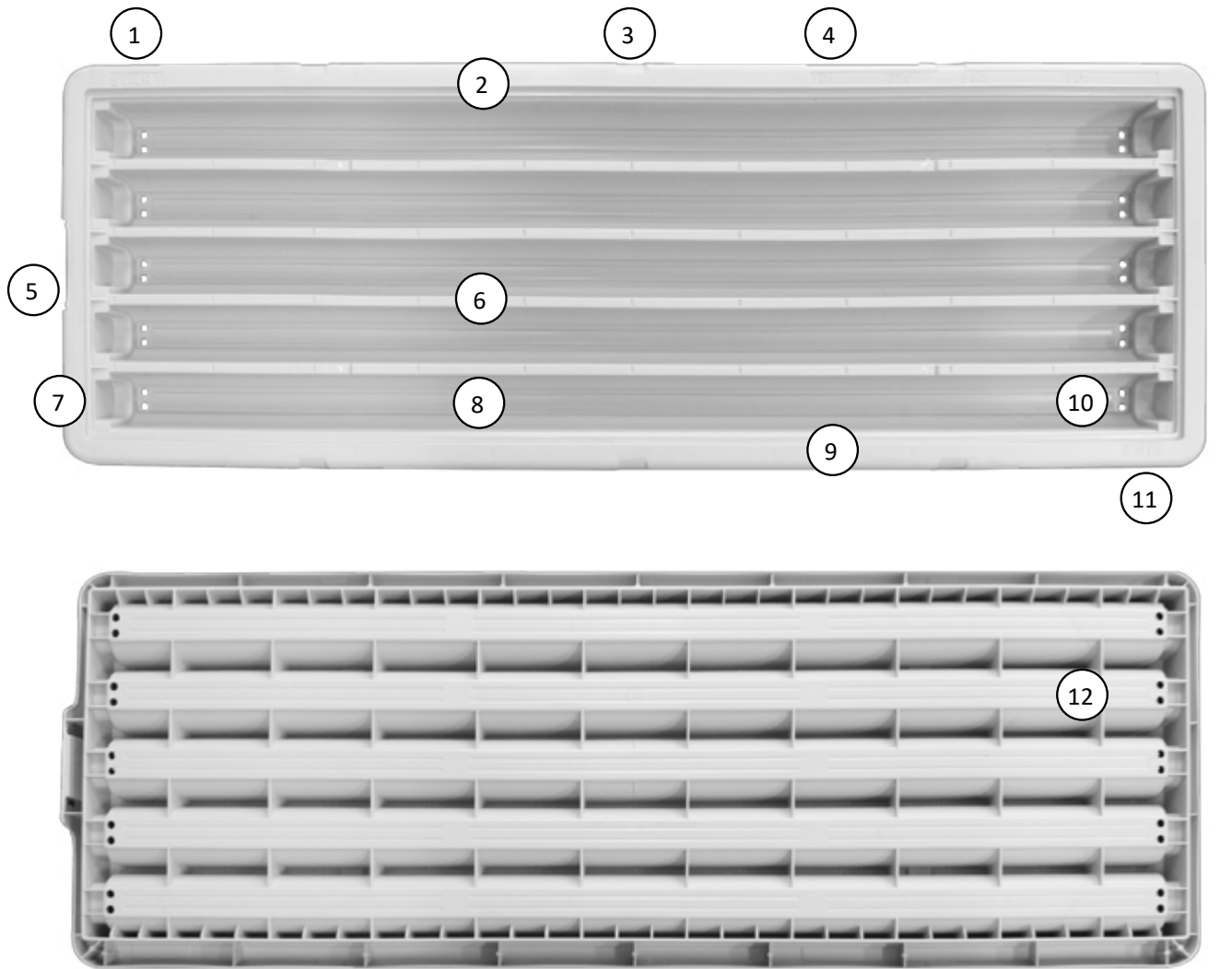
The tray is manufactured in a material for temperate climates to +55°C as standard. Trays are also UV stabilised and protected, giving longer life in the field.

Core Tray Plastic

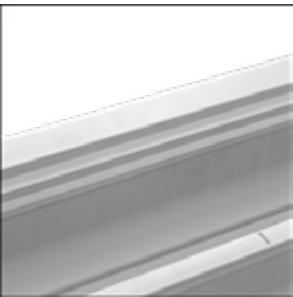
Impala 5 Tray

Designed to be our strongest tray yet.
Grey colour ex stock. White or Black to manufacture.

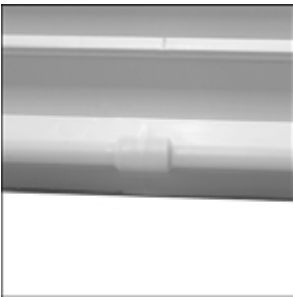
- Grey: Often preferred for photography, also reduces glare.
- White: Heightens contrast in photography.
- Black: Ideal for use with high-logger and Core ScanSystem.



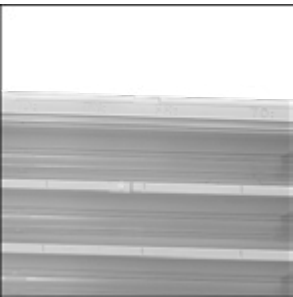
1. A more prominent START marking to avoid mistakes when placing the core into the tray.



2. 5mm additional height around the external wall to ensure safer stacking whilst holding broken cores.

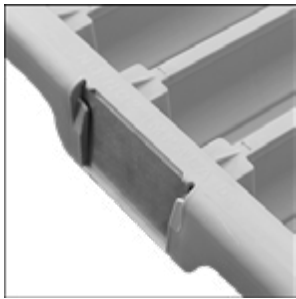


3. 3 indents for strapping – on each side to ensure maximum security during transport and handling.

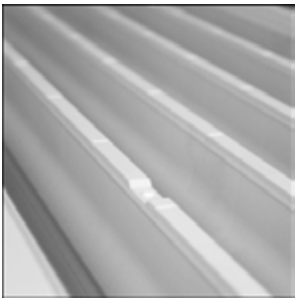


4. ID, TY, FR, TO marked on the tray handle for your notes. There is an embossed border around it, so your notes would not scratch off during the handling or when trays are stacked.

Core Tray Plastic



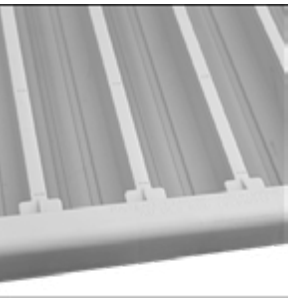
5. All the core trays come with an Aluminium or RFID-compatible tag slot. The impala 5 side clip has been updated to ensure the RFID tag does not slip out during transport.



6. An additional 5mm gap between trays when stacked leaving the rib height lower as per customers' preference.



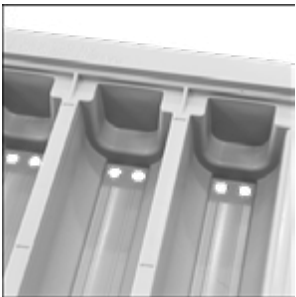
7. Deeper finger recess at the ends of each row to enable easy removal of the core.



8. Two Drainage Channels are provided for each row, in the form of two gullies running through the length of the tray.



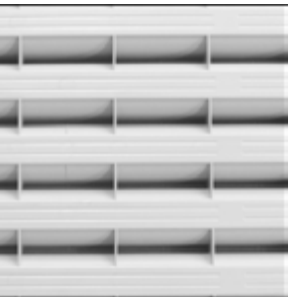
9. Wider and deeper Handle runs all the way around the tray to accommodate gloved hands.



10. Two drainage holes are provided at the start and end of each row.



11. A more prominent END marking to avoid mistakes when placing the core into the tray.



12. Flatter, single-planned bottom, designed for smoother rolling on core tray roller racking.

SKU	DESCRIPTION	SIZE
1126-30501-GREY	Impala 5 Plastic Core Tray	N2 - 5 Row
1126-30502-GREY	Impala 5 Plastic Core Tray	H - 4 Row
1126-30501-WHITE	Impala 5 Plastic Core Tray	N2 - 5 Row
1126-30502-WHITE	Impala 5 Plastic Core Tray	N2 - 4 Row
1126-30501-BLACK	Impala 5 Plastic Core Tray	N2 - 5 Row
1126-30502-BLACK	Impala 5 Plastic Core Tray	N2 - 4 Row

Impala 5 Accessories

SKU	DESCRIPTION	UOM
1126-30500-GREY	Core Tray Plastic Lid Impala 5	Each
1156-00120	Aluminium Tag	Hundred
1124-00001	Core Tray Plastic Marker N2	Hundred
1124-00000	Core Tray Plastic Marker H	Hundred

N2 Core Tray

- Overall Length: 1100mm
- Usable Length: 1000mm
- Width: 395mm
- Height: 65mm
- Weight: 2.7kg
- Core Capacity: 5 rows
- Pallet Quantity: 93
- Pallet Dims: 1180 x 1100 x 1990mm
- Pallet Weight: 280kg
- 20ft Container: 930 trays
- 40ft Container: 1860 trays

H Core Tray

- Overall Length: 1100mm
- Usable Length: 1000mm
- Width: 395mm
- Height: 75mm
- Weight: 2.9kg
- Core Capacity: 4 rows
- Pallet Quantity: 75
- Pallet Dims: 1180 x 1100 x 1960mm
- Pallet Weight: 250kg
- 20ft Container: 750 trays
- 40ft Container: 1500 trays





Perth Main Warehouse

66 Truganina Rd, Malaga,
Western Australia 6090
+61 (0) 8 9209 8500
perth@westernex.com.au

Kalgoorlie Warehouse

18 Kinclaven Way, Broadwood,
Kalgoorlie, Western Australia 6430
+61 (0) 8 9091 1152
kalgoorlie@westernex.com.au

Brisbane Warehouse

14 Hasp St, Seventeen Mile Rocks,
Queensland 4073
+61 (0) 7 3376 2422
brisbane@westernex.com.au

Mt Isa Warehouse

13 Ryan Rd, (Entry off Davis Rd)
Mt Isa, Queensland 4825
+61 (0) 7 4743 2122
mtisa@westernex.com.au

Orange Warehouse

72 Astill Drive, Orange,
NSW, 2800
+61 (0) 7 3376 2422
brisbane@westernex.com.au

