

Maintenance



Abrasives, Sealants & Fillers

Flexovit Metal Chop Saw Cutting Wheel

Ideal for general purpose cutting of stainless steel and ferrous metals, this Flexovit cutting wheel is designed for use on mitre cut saws and is suitable for both DIY and trade use. Ideal for bar and tubing. For chop low speed chop saws, free of iron, sulphur and chlorine.

SKU	SIZE
1211-01077	356 x 3.0 x 25.4mm

Suitable for our Metal Cut-off Saw GCD 12 JL Professional.



Flexovit Metal Cutting Wheel

This Flexovit Metal Wheel is suitable for general purpose cutting of ferrous metals and steel. For cutting ferrous thin gauge sheet steel, plate and small section.

SKU	SIZE
1211-01014	125 x 2.5 x 22mm
1211-01069	180 x 2.5 x 22mm
1211-01076	230 x 2.5 x 22mm



Flexovit Maxx Mega Inox Cut Off Wheel

The Flexovit Cut Off Wheel is ultra thin and premium grade for fast burr-free cutting. This Cut Off Wheel is suitable for cutting stainless steel, alloy steels and hard ferrous metals. Fast burr-free cutting.

SKU	SIZE
1211-01110	100 x 1.0 x 16mm
1211-01075	125 x 1.0 x 22mm
1211-01013	180 x 1.6 x 22mm



Flexovit Metal Grinding Wheel

General purpose grinding of ferrous metal welds and structural steels. Excellent grinding performance and stock removal.

SKU	SIZE
1211-01015	125 x 6.8 x 22mm
1211-01073	180 x 6.8 x 22mm
1211-01072	230 x 6.8 x 22mm



Abrasives, Sealants & Fillers

Loctite C5-A Copper Anti-Seize

LOCTITE C5-A Copper Anti-Seize, Copper, general purpose copper assembly paste, allows cold weather application to parts for year-round maintenance, and seizing at temperatures to 1796°F (980°C).

SKU	SIZE
1203-07006	453g



Loctite High Pressure Pipe Sealant

High pressure. High strength and fast cure pipe sealant, seals all size metal fittings, non-toxic, no particles to foul valves or orifices. Good chemical resistance (most acids, solvents and gases).

SKU	SIZE
1203-07014	250mL



Loctite Prism High Performance Instant Adhesive

Designed for rapid bonding of plastics and elastomeric materials including EPDM where very fast fixturing is required. Well suited for polyolefines in combination with Loctite Primer 770.

SKU	SIZE
1203-07008	100mL



Loctite Epoxy Instant Mix 5 Minute

Two-part adhesive consisting of an epoxy resin and a hardener that when mixed in equal volumes, react to produce a tough, rigid, high strength bond, which starts to set in 5 minutes and reaches handling strength in 1 hour. Recommended for bonding metal, glass, ceramic, wood, many rigid plastics, china, tile, fiberglass, concrete and stone

SKU	SIZE
1203-07011	29.5mL



Loctite Grey High Performance RTV Silicone Gasket Maker

Ideal for sealing all types of flanges including stamped sheet metal covers where water-glycol resistance is required. Tack-free after 10 min.

SKU	SIZE
1203-07009	300mL



Loctite Prism Instant Adhesive, Surface Insensitive

For acidic surfaces such as chromate or galvanised surfaces. Designed for OEM assembly of difficult-to-bond materials which require uniform stress distribution. Particularly suited for bonding a wide range of materials, including metals, plastics, and elastomers.

SKU	SIZE
1509-00212	25mL



Abrasives, Sealants & Fillers

Loctite Bearing Mount Medium Strength

Ideal for parts that require disassembly. Can be used in slip, press or shrink fits to prevent unwanted movement and fretting corrosion. Applications: mounting bearings, bushes, sleeves, seals, valve guides, woodruff keys & liner assemblies.

SKU	SIZE
1203-07010	250mL



Loctite Retaining Compound

Low viscosity. Rapid-curing anaerobic adhesive that augments the strength of press fit assemblies or slip fit assemblies up to 0.005" in diameter. Recommended for parts that will need subsequent dismantling.

SKU	SIZE
1203-07013	250mL



Loctite High Strength Threadlocker

Suitable for threads up to 25mm, aggressive chemical, hydraulic, marine threadlocking and sealing environments. Stops loosening and leakage due to vibration. Suitable for refrigeration. Needs extra effort to undo and is chemical resistant. Temperature range: -55°C to +150°C.

SKU	SIZE
1203-07007	250mL



Loctite Medium Strength Fast Cure Hydraulic Thread Sealant

Designed for the locking and sealing of metal pipes and fittings. The product cures when confined in the absence of air between close fitting metal surfaces and prevents loosening and leakage from shock and vibration.

SKU	SIZE
1509-00199	50mL



CRC Automotive Silicone Lubricant

Non-corrosive formula that lubricates, protects and eliminates squeaking and binding caused by friction. This silicone is clear, odourless and highly resistant to water.

SKU	SIZE
1203-07027	300g



Abrasives, Sealants & Fillers

CRC Lectra Shield

An inhibited coating that forms a transparent, amber film that dries to touch in one to two hours. It provides excellent protection through extreme temperature ranges. Will not craze or crack.

SKU	SIZE
1203-07019	300g



CRC Power Lube with PTFE

Lubricant that incorporates a sophisticated additive package including PTFE to provide long lasting protection against friction and wear. It out-performs conventional lubricants in effectiveness, dramatically increasing the life and operating efficiency of parts and equipment. Displaces moisture and provides a long wearing protective film.

SKU	SIZE
1203-07025	300g



CRC Extreme Duty Silicone Lubricant

Premium grade, high quality silicone lubricant that exhibits excellent temperature viscosity and lubrication characteristics.

SKU	SIZE
1203-07024	300g



CRC NF Contact Cleaner

It is chemically stable and evaporates rapidly. It has no flash point and leaves no residue. NF Contact Cleaner instantly removes grease, oil, dirt, flux and other contaminants. This product is chemically stable, non-conductive and non-corrosive. It does not contain CFC 113 or Methyl Chloroform. Non-flammable.

SKU	SIZE
1203-07018	400g



Abrasives, Sealants & Fillers

CRC 5-56 Flammable Aerosol

Multi-purpose lubricant that has superior penetrating power that breaks through rust and corrosion while it cleans away scale and dirt. Eliminates the need for many disassembly operations. Protects metals against corrosion and displaces moisture to help start wet engines.

SKU	SIZE
1203-07026	175g



CRC Belt Grip Aerosol

Scientifically formulated with a synthetic polymer that is non drying, water resistant and chemically stable. It extends the life of drive belts by improving traction. CRC Belt Grip was specially developed to meet the demands for a true industrial, automotive and food grade belt adhesive.

SKU	SIZE
1203-07039	400g



CRC 3-36 Aerosol

Prevents rust and corrosion by displacing and sealing out moisture and by forming a continuous protection barrier against water and oxygen.

SKU	SIZE
1203-07028	300g



Loctite ODC-Free Cleaner & Degreaser

General purpose cleaner/degreaser, ideal for preparing surfaces prior to use of all Loctite® adhesives and sealants. Removes all traces of grease and oils, and leaves no residue. It is non-flammable and low in toxicity. 12 pump spray cans per case.

SKU	SIZE
1203-07012	473mL



Abrasives, Sealants & Fillers

Treblex Environmentally Friendly Mine Spec Degreaser

Treblex Industrial Pty Ltd is a Western Australian company based in Perth. With over 15 years of experience in the industry Treblex Industrial has become a reliable recognised supplier of an extensive range of aerosols including Non-Flammable, sought after industrial cleaning products, specially blended greases, environmentally friendly cleaning products, and solvent degreasers.

Treblex Environmentally Friendly Heavy Duty Mine Spec Degreaser is a heavy duty, safe, non-toxic, biodegradable multi-purpose quick break liquid degreaser. Mine Spec is strong enough for cleaning all types of heavy mining and transport equipment. Use manually or with a high pressure cleaner. Highly concentrated water base so you can custom dilute for specific needs. This makes it a cost effective way to remove oil, lubricants, grease and grime from most washable surfaces. Contains no hydro carbons.

Features

- Non-toxic
- Non-flammable.
- Non-caustic
- Quick-break.
- Biodegradable.
- Hydro carbon free.
- Multi-purpose
- Cleans all surfaces.
- Safe on painted surfaces.
- Safer alternative to hazardous chemicals and solvents.
- Highly concentrated, economical in use.
- Package sizes: 5L, 20L, 200L, 1000L

SKU	SIZE
1002-00420-1000L	1000L
1002-00420-200L	200L
1002-00420-20L	20L
1002-00420-5L	5L

SAFETY : Not classified as hazardous. Please read SDS sheet before use. Keep out of reach of children.

Clean Green Cleaner Degreaser

- Non-toxic, non-caustic, solvent-free
- Tough on oil, grease & built-up grime
- Safe to use in domestic applications i.e. floors, tiles, bench top surfaces, offices, bathrooms & more.
- Safe on all surfaces, including food processing areas, mining, automotive and industrial.
- Suitable for high pressure cleaners/scrubbers
- Eco and user friendly
- Biodegradable
- Phosphate-free
- Quick-break

SKU	SIZE
1002-00399-5L	5Litre
1002-00399-20L	20Litre



Applications

- Removes grease, oil, dirt and grime from floors, wall vehicles, locomotives, stationary engines and compressors.
- Used for cleaning heavy machinery, mining equipment, trucks, workshop and maintenance cleaning.
- May be applied by pressure cleaner, foam gun, mop, spray, manually or in a soak tank. May be diluted for brushing.

Directions

- Can be diluted or use from a spray bottle direct onto soiled area.
- Dilution rates:
Heavy Duty – 1:10 parts water.
Medium Duty – 1:40 parts water.
Light Duty – 1:100 parts water.



Abrasives, Sealants & Fillers

Protech Air Duster 235g

- Safe to use on electronics
- Dust and lint remover
- Non-corrosive

SKU	UOM
1203-01804	Pack of 6



Protech Silicone Lubricant 350g

- Lubricates and revives
- Waterproof and protects
- Prevents parts from sticking

SKU	UOM
1403-00501	Pack of 6



Abrasives, Sealants & Fillers

Protech Dry Graphite Lubricant 150g

- Finely ground powder for optimum penetration
- Lock lubricant
- Reduces friction and wear

SKU	UOM
1403-00507	Pack of 6



Protech White Lithium Grease 300g

- Long lasting protection and heavy duty lubricant
- Water and heat resistant
- For use on metal to metal connections

SKU	UOM
1403-00508	Pack of 6



Protech Heavy Duty Degreaser 400g

- Removes grease, oil dirt and grime
- Easy to rinse off with water
- Cleans engines and parts fast

SKU	UOM
1403-00502	Pack of 6



Protech Lanolin Lubricant General Purpose 400g

- General lubricant and penetrant
- Moisture, salt and acid resistant
- Rust preventative

SKU	UOM
1403-00505	Pack of 6



Protech Wet PTFE Lubricant 300g

- Long lasting lubrication
- For use on metal, glass and plastics
- Reduces friction and wear

SKU	UOM
1403-00509	Pack of 6



Protech Chain Lubricant 300g

- Reduces wear and friction
- For use on all types of chains
- Long lasting lubrication

SKU	UOM
1403-00510	Pack of 6



Protech Electrical Cleaner Non-Flammable 400g

- No flash fire point
- Leaves no residue
- For use on electrical equipment as a degreaser/cleaner for heavy duty applications.

SKU	UOM
1403-00500	Pack of 12



Protech Multi-Purpose Lubricant 400g

- Penetrant & lubricant
- Rust preventative
- Displaces moisture

SKU	UOM
1403-00506	Pack of 12



Protech Penetrating Oil 400g

- Frees corroded nuts and bolts
- Penetrates rust
- Fast acting

SKU	UOM
1403-00512	Pack of 12



Protech Freeze Spray 300g

- Freezes instantly
- Coolant for electrical and electronics use
- Non-flammable

SKU	UOM
1403-00514	Pack of 6



Protech Brake & Parts Cleaner Chlorinated 500g

- Removes brake fluid, oil, grease and dirt
- Cleans without disassembling unit
- No residue

SKU	UOM
1403-00504	Pack of 6



Protech Brake & Parts Cleaner Non-Chlorinated 350g

- Removes brake fluid, oil, grease and dirt
- Cleans without disassembling unit
- No residue

SKU	UOM
1403-00503	Pack of 6



Protech Isopropyl Alcohol Precision Cleaner 275g

- High purity formula
- Fast drying, leaves no residue
- Safe on most plastics

SKU	UOM
1403-00513	Pack of 6



Books

Forklift Pre-Start Checklist Book

Assists in the identification of any faults with your forklift before starting forklift operations. The checklist is quick and simple to use and guides you through a series of checks to ensure the safe operation of the forklift.



SKU
1112-10012

Light Vehicle Pre-Start Checklist Book

Assists in the identification of any faults with your vehicle before starting vehicle operations. The checklist is quick and simple to use and guides you through a series of checks to ensure the safe operation of the vehicle.



SKU
1112-10013

Heavy Vehicle Pre-Start Checklist Book

Assists in the identification of any faults with your vehicle before starting vehicle operations. The checklist is quick and simple to use and guides you through a series of checks to ensure the safe operation of the vehicle.



SKU
1112-10014

Operator Log Book

Specifically designed for all operators of plant and machinery to record their ongoing operating history, competency, skills, experience and training. It is essential that you maintain your Operator Log Book with accurate and up-to-date information, as it formally verifies your operating history, competency, training and qualifications.



SKU
1112-10015

Concrete

4.8hp Diesel Plate Compactor

- Soft grip handle
- 4.8hp DY23 Subaru diesel engine
- Fast travel speed for increased productivity
- Reversible handle with easy to reach throttle control
- Compact design with central enclosed exciter for even compaction force.
- Lifting hook and engine protection frame
- Precision robotic welded
- Applications: Diesel engine suits minesites, turf, soil, brick paving.
- Weight: 98kg
- Fuel type: Diesel
- Decibels @ 7m: 66db
- Centrifugal force: 18kn



SKU
1172-00101

40” Diesel Power Trowel

- Gut bar with ergonomic handles offers easily adjustable control.
- Engine safety stop switch located at the top of the shaft
- One piece extra long shaft calculated to provide balanced trowel control with fully adjustable handle for operator height compatibility.
- Low profile heavy duty lifting bar.
- Long life gear box developed exclusively and features cooling fins (works like an air cooled engine) and heavy duty gears, worm drive and bearings.
- Operator has the ability to increase the trowelling weight in increments of 5kg, maintaining balance and providing the desired finish even as the concrete dries.
- Advanced blade drive design provides long life, maintains accuracy and is easy to clean.
- Accepts Australian interchangeable blades.
- Solidly constructed blade guard protects the operator when trowel is in use.
- Blade access gate allows ample room for easy blade changes and cleaning.
- Applications: Concrete tilt panels, house pads, mine & diesel related jobs.



SKU
1502-01502

Digging

Shovel Contractor Square Mouth D Handle

The original and ultimate contractors shovel designed for shifting, loading and spreading light to heavy materials. Weighs 2.1kg.

SKU	LENGTH	BLADE
BN01	980mm	255 x 300mm



Shovel Post Hole Square Mouth Long Handle

Square mouth post-blade suitable for digging and clearing deep holes. Designed for general purpose digging, trenching and shovelling tasks requiring a narrow blade. Weighs 2.6kg.

SKU	LENGTH	BLADE
BN09	1146mm	190 x 280mm



Shovel Round Mouth D Handle

General purpose shovel for digging, shifting and loading coarse or compact materials. Suitable for hard/dry soil or aggregate. Forward rolled foot tread. Weighs 2.1kg.

SKU	LENGTH	BLADE
BN03	980mm	190 x 310mm



Shovel Round Mouth Long Handle

Suitable for general digging, shifting and loading coarse or compact materials. Excellent for hard earth, clay and aggregate. Weighs 2.8kg.

SKU	LENGTH	BLADE
BN08	1446mm	290 x 310mm



Digging

Shovel Square Mouth D Handle

Exclusive shaft design specifically for backhand trades persons, such as concreters and asphalt workers. Provides the same postural advantage as the original ergonomic shovel with a greater backhand functionality. Excellent general purpose shovel for shifting, loading and spreading light to heavy materials. Weighs 2.1kg.

SKU	LENGTH	BLADE
BN02	980mm	255 x 310mm



Shovel Square Mouth Long Handle

Suitable for shovelling bulk materials, loading and spreading. Weighs 2.8kg.

SKU	LENGTH	BLADE
BN07	1446mm	225 x 300mm



Spade D Handle

General purpose spade for hole digging, turning and cultivating soils and sand. Unique slightly curved blade edge provides better strength and cutting ability. Weighs 1.9kg.

SKU	LENGTH	BLADE
BN04	1000mm	190 x 300mm



Bar Crow Hexagonal

The sharpened chisel and pointed ends are designed for loosening soils in deep holes/trenches and for levering heavy items around the home, garden, farm or building site.

SKU	SIZE
1209-00407	1800 x 30mm



Bar Fencing Round

Ideal for fencing contractors and farmers digging, packing and ramming soil. The chisel point loosens and digs and the upset head rams and packs soil around the bases of posts.

SKU	SIZE
1209-10027	1800 x 25mm



Digging

Mattock with Timber Handle

General purpose mattock with a wide flat end for grubbing out stumps & roots, trenching and breaking up hard packed soils. Cutter end is great for cutting through roots. Fully forged head, from high carbon steel.

SKU	SIZE
1209-10020	2.25kg

Road Pick with Timber Handle

Versatile point and chisel design picks are heavy duty for the toughest conditions. Great for major landscaping or excavation, breaking hard ground, trenching and digging amongst stones.

SKU	SIZE
1209-10021	2.25kg

Post Hole Pincer

Ideal for fencing contractors and farmers digging, packing and ramming soil. The chisel point loosens and digs and the upset head rams and packs soil around the bases of posts.

SKU	SIZE
1209-10019	3.5kg

Shovel Trenching Long Handle Timber

Specially designed for narrow trenching of agricultural drainage, laying water and gas pipes, as well as cables. Long handle for extra leverage.

SKU	SIZE
1209-10015	120W x 1460H x 150Lmm

Shovel Post Hole Long Handle Fiberglass

Ideal for digging post holes, clearing & mixing work. Trade quality 3mm fiberglass handle.

SKU	BLADE	BLADE THICKNESS
1209-00425	275mm x 200mm	2mm Carbon Steel

Shovel Post Hole Long Handle Timber

Good general purpose shovel for digging, clearing deep narrow holes, pits, fencing and shallow trenches.

SKU	OVERALL LENGTH
1209-10004	1450mm



Digging

Shovel Round Mouth D Handle Timber

Suitable for general digging, shifting and loading compact materials, including dry soil and sand. 2mm boron and titanium treated Australian steel blade. Lacquer-sealed premium Australian hardwood handle prevents splintering. Galvanised dee grip for extra strength.

SKU	OVERALL LENGTH
1209-01702	960mm

Shovel Round Mouth Long Handle Timber

Ideal for general digging work and shovelling. Suitable for digging, shifting and loading compact materials, including dry soil and sand. Long handle for extra

SKU	SIZE
1209-10008	285W x 1450H x 300Lmm

Shovel Square Mouth D Handle Timber

General purpose shovel for shifting, loading and spreading heavy to light materials. Short handle for close work.

SKU	SIZE
1209-00422	265W x 970H x 315Lmm

Shovel Square Mouth Long Handle Timber

For shovelling heavy soils & sand. General purpose shovel for shifting, loading and spreading heavy to light materials. Long handle for extra leverage.

SKU	SIZE
1209-10012	265W x 930H x 1470Lmm

Wooden Pelican Pick

Wooden handle. The pelican pick will shovel, hoe, scrape, dig trenches and pick. It is extremely durable and will stand up to the roughest treatment. Manufactured from high grade heavy gauge steel plate, the pelican pick is virtually indestructible.

High Visibility Pelican Pick

High-visibility, orange, shock-proof handle. The pelican pick will shovel, hoe, scrape, dig trenches and pick. It is extremely durable and will stand up to the roughest treatment. Manufactured from high grade heavy gauge steel plate, the pelican pick is virtually indestructible.



Digging

Scaling Bar - C/W Deflector

SKU	SIZE
1203-02300	1.2m
1203-02301	1.5m
1203-02302	1.8m
1203-02303	2.4m



Scaling Bar Aluminium C/W Deflector

SKU	SIZE
1203-02304	3m



Post Hole Auger

Suitable for digging round post holes for fencing, hanging gates, even for planting trees and shrubs.

SKU	SIZE
1101-00101	100mm
1101-00100	150mm



Electrical

Wire Bell Twisted Pair

- Cores: 2
- Material: V-90 PVC

SKU	COLOUR	SIZE
1304-01033	Red / White	200 meter
1304-01032	Red / White	500 meter



Power Board 4 Outlets On/Off Switch

- 4 outlet switched
- 0.9m lead
- 10A white switched powerboard

SKU
1304-01036



Power Board 4 Outlets with Surge

- 4 outlet
- 0.9m lead
- 10A white S150j surge protection powerboard

SKU
1304-01035



Extension Lead Heavy Duty

Yellow heavy duty lead. 10A, clear socket with safety skirt & clear plug. Quality branded, virgin copper and high grade UV-stable polymer coating.

SKU	COLOUR	SIZE
1304-01013	Yellow	10 meter
1304-01014	Yellow	15 meter
1304-00006	Yellow	20 meter



Extension Lead Heavy Duty 15amp

High visibility 15 Amp cable and wide blade earth terminal makes this extension lead ideal for caravans, boats, welders and all high power applications.

SKU	COLOUR	SIZE
1304-01018	Orange	10 meter
1304-01019	Orange	15 meter
1304-00350	Orange	20 meter



Electrical

Cable Ties

- High Quality 66UL Nylon
- UL94V-2 Flammable rating
- UV-stabilised to resist material breakdown and to increase service life



SKU	COLOUR	SIZE	UOM
1303-00100	Black	150 x 3.6mm	Hundred
1303-00101	Black	200 x 4.8mm	Hundred
1303-00102	Black	250 x 4.8mm	Hundred
1303-00103	Black	300 x 4.8mm	Hundred
1303-00104	Black	370 x 4.8mm	Hundred
1303-00105	Black	450 x 8.0mm	Hundred

Insulation Tape

- Generic PVC insulation tape
- 18mm wide
- 20m roll

SKU	COLOUR	SIZE
1214-00006	Assorted Pack of 10	18mm x 20 meter
1304-00604	Blue	18mm x 20 meter
1304-00605	Red	18mm x 20 meter
1304-00606	White	18mm x 20 meter
1304-01034	Black	18mm x 20 meter



Communications Conduit

Rigid wall PVC conduits are used by Australia’s growing telecommunications industry. PVC is ideally suited for electrical conduits, both for above and below ground cables as it is non-conductive, lightweight and easy to install. These conduits are used in buried applications and in buildings either fully exposed or encased in concrete floors.

SKU	SIZE	LENGTH
1905-11005-32	32mm	4m
1905-11005-50	50mm	4m
1905-11005-63	63mm	4m
1905-11005-80	80mm	6m
1905-11005-100	100mm	6m



Communications Conduit Chart

Pipe Size		Comms			Pack/Crate	
Nom.Bore (mm)	Mean OD (mm)	Mean ID (mm)	Mean Wall (mm)	Ave. Weight (kg/m)	Length (mtr)	Pack Qty
32	31.85	27.45	2.2	0.31	4	360
50	49.85	43.95	2.95	0.64	4	195
63	63	56.6	3.2	0.86	4	202
80	85.1	82.1	1.5	2.28	4	104
100	109.5	104.7	2.4	3.8	4	67

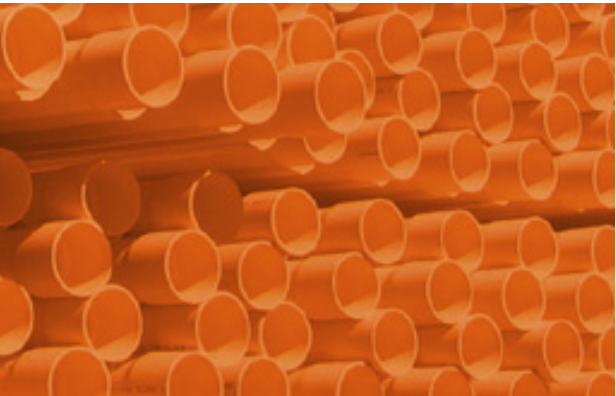
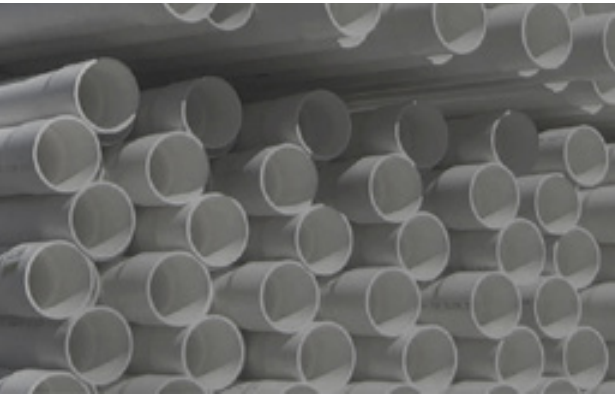
Please note that the figures shown are subject to change and are correct at the time this document was printed.

Electrical

PVC-U Electrical Conduit Solvent Weld (SWJ)

Westernex offers a range of electrical conduit and ducting, manufactured in accordance with AS/NZS 2053, suitable for both commercial and domestic applications. PVC is ideally suited for electrical conduits, both for above and below ground cables as it is non-conductive, lightweight and easy to install. These conduits are used in buried applications and in buildings either fully exposed or encased in concrete floors. Whilst AS/NZS determines the most common length at 4m long.

SKU	SIZE	LENGTH	TYPE
1905-11004-20	20mm	4m	Medium Duty Grey
1905-11004-25	25mm	4m	Medium Duty Grey
1905-11004-32	32mm	4m	Medium Duty Grey
1905-11004-40	40mm	4m	Medium Duty Grey
1905-11004-50	50mm	4m	Medium Duty Grey
1905-11003-20	20mm	4m	Heavy Duty Orange
1905-11003-32	32mm	4m	Heavy Duty Orange
1905-11003-40	40mm	4m	Heavy Duty Orange
1905-11003-50	50mm	4m	Heavy Duty Orange
1905-11003-63	63mm	4m	Heavy Duty Orange
1905-11003-80	80mm	4m	Heavy Duty Orange
1905-11003-100	100mm	4m	Heavy Duty Orange
1905-11003-125	125mm	4m	Heavy Duty Orange
1905-11003-150	150mm	4m	Heavy Duty Orange
1905-11003-200	200mm	4m	Heavy Duty Orange



PVC-U Electrical Conduit Solvent Weld (SWJ) Chart

Pipe Size		Medium Duty Grey			Heavy Duty Orange			Pack/Crate	
Nom. Bore (mm)	Mean OD (mm)	Mean ID (mm)	Mean Wall (mm)	Ave. Weight (kg/m)	Mean ID (mm)	Mean Wall (mm)	Ave. Weight (kg/m)	Length (mt)	Pack Qty
20	19.85	15.05	1.75	0.17	16.35	2.4	0.19	4	600
25	24.85	19.65	1.95	0.2	20.95	2.6	0.26	4	600
32	31.85	26.25	2.2	0.31	27.45	2.8	0.37	4	360
40	39.85	33.45	2.55	0.52	34.75	3.2	0.52	4	270
50	49.85	42.85	2.95	0.64	43.95	3.5	0.75	4	195
63	62.85	---	---	---	58.85	4	1.07	4	202
80	88.9	---	---	---	84.1	4.8	1.87	4	104
100	114.3	---	---	---	108.3	6	3.08	4	67
125	140.2	---	---	---	132.8	7.4	4.65	4	45
150	160.3	---	---	---	151.8	8.5	6.13	4	33
200	225.3	---	---	---	215.8	9.5	14.5	4	15

Please note that the figures shown are subject to change and are correct at the time this document was printed.

Fasteners

Rivet Gun

- Chrome plated steel construction
- Auto eject system for rivets
- Easy grip non slip handles



SKU
1202-00321

Rivet Aluminium

- Easy to use
- Aluminium
- Great corrosion resistance
- Increased tensile strength
- Applied using appropriate rivet gun
- Ensures clamping force is retained in joints



SKU	SIZE	UOM
1202-00319	3.2mm - 6.4mm	Pack of 1000
1202-00320	4.8mm - 6.4mm	Pack of 1000

Dynabolt Eye

SKU	SIZE	UOM
1202-00318	M8 x 45mm	Pack of 100



Dynabolt Hook

SKU	SIZE	UOM
1202-00317	M8 x 45mm	Pack of 100



Dynabolt Hex Head

The DynaBolt™ Plus Sleeve Anchor is a medium duty, torque controlled, expansion anchor, with an integrated pull-down section, designed for medium duty anchoring of timber and steel fixtures to concrete, brick or block.

SKU	SIZE	UOM
1202-00136	M10 x 40mm	Box of 50
1202-00137	M10 x 50mm	Box of 50
1202-00138	M10 x 75mm	Box of 50
1202-00139	M10 x 100mm	Box of 25
1202-00140	M10 x 125mm	Box of 25



Fire Extinguishers

Dry Chemical Powder Extinguishers

- Class A Paper, textiles, wood, most plastics & rubber
- Class B Flammable liquids
- Class E Electrically energised equipment

SKU	DESCRIPTION	SIZE
1702-00512	Vehicle Mount	1kg
1702-00514	Wall Mount	2.5kg
1702-00511	Wall Mount	4.5kg
1702-00515	Wall Mount	9.0kg



Extinguisher HD Vehicle Bracket
Wrap Around

SKU	SIZE
1702-00521	4.5kg
1702-00522	9.0kg



Extinguisher HD Vehicle Bracket
Over Centre

SKU	SIZE
1702-00523	4.5kg
1702-00524	9.0kg



Generator - Diesel DCA-35

Why Diesel Generators?

Diesel Generators are widely regarded as the most bullet proof generators in the world. This fact, combined with Westernex huge stock levels, ability to service nationally and legendary support makes it a winning combination.

SKU
1148-90000-C



Super Silent Technology

The frame and housing are built with high-strength materials, and all doors are engineered to minimise vibration. Sound Attenuated Enclosure is lined with a special vibration-absorbent polymer material to reduce vibrations. This oil-resistant material is bonded to the walls of the canopy with resilient adhesive that enhances its performance. The unit’s airflow has been engineered to provide proper cooling at an absolute minimum noise level.

Control Panel

No complicated Electronics! Simple Analogue Dials are easier to operate and create fewer faults than sets controlled by Electronics, especially in very hot and dusty environments. Warning Lights and analogue gauges (including fuel, tachometer, oil pressure, coolant temperature and charging system amps) providing easy monitoring of engine operations.

Compact Design

These Japanese engineered sets are generally more compact than other generators. This makes them far more versatile and portable.

More Efficient

By only using the best Japanese engines available, such and Kubota and Isuzu, our generators will use less fuel than other machines on the market. In Prime power applications this can mean massive savings for the end user over the period of the project.

Optional extras

- Power Outlets
- Lockable Battery Isolator
- Fire Extinguisher
- Long-Rang Fuel Tank
- 3 Way Fuel Valve
- Hi-VisTape
- Heavy Duty Skid with Fork Points
- Outlet Kits:
 - 3 x 15AMP 1 x 32AMP
 - 3 x 15AMP 2 x 32AMP
 - 3 x 15AMP 1 x 32AMP 1 x 50 Amp

SKU
1148-90000-C-1
1148-90000-C-3
1148-90000-C-4
1148-90000-C-5

Hardware - Bosch Professional Power Tools & Accessories



Westernex is the re-seller of Bosch products. Contact us to check their availability and specifications or if you have enquiries about the products. Check our website to view all the products, please provide the product number when you contact us.

Hardware

Northfork Heavy Duty Degreaser

- Premium cleaner for vehicle exteriors
- Specially formulated for removal of dust grime & bugs
- Has a blend of biodegradable detergents
- Cleaner and degreaser

SKU	SIZE	UOM
1002-01318-5	5L	Carton of 3
1002-01318-15	15L	Carton of 3



Northfork Truck Wash

- Premium cleaner for vehicle exteriors
- Specially formulated for removal of dust grime & bugs
- Has a blend of biodegradable detergents
- Cleaner and degreaser

SKU	SIZE	UOM
1002-01329-5	5L	Carton of 3
1002-01329-15	15L	Carton of 3



Drill Bit Set

- Strong metal box
- Slim & compact
- Security hang tab
- Feeds & speeds chart inside every drill set
- Sizes available: 1.0 - 13.0 in 0.5mm increments
- Genuine alpha gold series jobber drill bits

SKU
1203-02522

Hardware

Masonry Drill Bit SDS Plus

- Centering chisel head with multi-flute spiral for maximum drilling capacity.
- Easy centering spot drilling.
- Dynamic, chisel-shaped head design.

SKU	SIZE
1203-02521	8.0 x 210mm
1203-02518	10.0 x 210mm
1203-02512	16.0 x 210mm



Jobber Drill Bit Metric

SKU	SIZE
1203-02531	1.50MM
1203-02546	2.0MM
1203-02547	2.5MM
1203-02552	3.0MM
1203-02553	3.3MM
1203-02554	3.50MM
1203-02558	4.0MM
1203-02559	4.50MM
1203-02560	5.0MM
1203-02561	5.5MM
1203-02564	6.0MM
1203-02565	6.5MM
1203-02566	7.0MM
1203-02567	7.5MM
1203-02570	8.0MM
1203-02571	8.5MM
1203-02572	9.0MM
1203-02534	10.0MM
1203-02535	10.50MM
1203-02536	11.0MM
1203-02538	12.0MM
1203-02530	12.5MM
1203-02539	13.0MM

Jobber Drill Bit Imperial

SKU	SIZE
1203-02533	1/8
1203-02574	9/64
1203-02563	5/32
1203-02537	11/64
1203-02555	3/16
1203-02541	13/64
1203-02569	7/32
1203-02543	15/64
1203-02532	1/4
1203-02544	17/64
1203-02573	9/32
1203-02545	19/64
1203-02562	5/16
1203-02548	21/64
1203-02556	3/8
1203-02549	25/64
1203-02540	13/32
1203-02550	27/64
1203-02568	7/16
1203-02551	29/64
1203-02542	15/32
1203-02557	31/64
1203-02575	1/2

Hose & Fittings



Dixon Camlock Coupling Female Male BSP Type B

Construction: Almunium die cast body, stainless steel levers and mild steel pins.

SKU	SIZE
1216-00007	50mm
1216-00041	65mm
1216-00047	75mm



Dixon Camlock Coupling Female Hose Tail Type C

Construction: Almunium die cast body, stainless steel levers and mild steel pins

SKU	SIZE
1216-00008	50mm
1216-00042	65mm
1216-00048	75mm



Dixon Camlock Coupling Female Female BSP Type D

Construction: Almunium die cast body, stainless steel levers and mild steel pins.

SKU	SIZE
1216-00009	50mm
1216-00043	65mm
1216-00049	75mm



Dixon Camlock Coupling Male Female BSP Type A

Construction: Almunium die cast

SKU	SIZE
1216-00006	50mm
1216-00040	65mm
1216-00046	75mm



Dixon Camlock Coupling Male Hose Tail Type E

Construction: Almunium die cast.

SKU	SIZE
1216-00010	50mm
1216-00044	65mm
1216-00050	75mm

Bronze sand cast, stainless steel and brass available upon request.



Dixon Camlock Coupling Male Male BSP Type F

Construction: Almunium die cast.

SKU	SIZE
1216-00011	50mm
1216-00045	65mm
1216-00051	75mm

Hose & Fittings

Minsup Locking Clip

The use of a Minsup Safety Locking Pin is necessary to ensure that Minsup A Type & Surelock Claw Couplings will not become accidentally disconnected. This ensures that the fittings are properly connected as the pin will not go through the holes in both couplings until the couplings are locked into place.



SKU
1216-05000

Minsup Type A Hose End BSP Connector

Minsup claw couplings are a universal hose coupling that provide quick, safe and reliable connections. Claw couplings are designed with a common or universal claw which enables differing hose sizes and nominal bore sizes to be connected. Claw couplings are most commonly used for conveying air and water, and are not to be used for steam applications. Common industry applications include: under ground and surface mining, mineral processing, compressor and air tool industries and hire companies.

SKU	SIZE
1216-00108	3/4"
1216-00107	1/2"
1216-00106	1"



Minsup Type A Male BSP Connector

Minsup claw couplings are a universal hose coupling that provide quick, safe and reliable connections. Claw couplings are designed with a common or universal claw which enables differing hose sizes and nominal bore sizes to be connected. Claw couplings are most commonly used for conveying air and water, and are not to be used for steam applications. Common industry applications include: under ground and surface mining, mineral processing, compressor and air tool industries and hire companies.

SKU	SIZE
1216-00114	3/4"
1216-00113	1/2"
1216-00109	1"



Minsup Type A Female BSP Connector

Minsup claw couplings are a universal hose coupling that provide quick, safe and reliable connections. Claw couplings are designed with a common or universal claw which enables differing hose sizes and nominal bore sizes to be connected. Claw couplings are most commonly used for conveying air and water, and are not to be used for steam applications. Common industry applications include: under ground and surface mining, mineral processing, compressor and air tool industries and hire companies.

SKU	SIZE
1216-00111	3/4"
1216-00110	1/2"
1216-00112	1"



Muff Coupling Aluminium

- Application: Designed to be used with Muff Coupling Hose (A800)
- Materials : Available in Aluminium AC601 shown and Grey Cast Iron as requested.
- Design: Flange available in Table D, Table E and ANSI configurations.

SKU	SIZE
1216-00327-050	Hose OD 69-71mm
1216-00327-075	Hose OD 102-104mm
1216-00327-100	Hose OD 125-129mm
1216-00327-125	Hose OD 152-157mm
1216-00327-150	Hose OD 180-184mm
1216-00327-200	Hose OD 234-238mm
1216-00327-250	Hose OD 284-290mm
1216-00327-300	Hose OD 343-349mm



Hose & Fittings

PVC Anfo Tube

- Semi-conductive transfer tube in pneumatic charging devices for explosive use.
- Minimum resistance of 0.015 MegaOhms / mtr
 - Maximum resistance of 2.0 MegaOhms / coil
 - Semi Rigid: -20°C to 60°C - PVC
 - Rigid: -20°C to 80°C - PE
 - Non-reinforced
 - Sold in full coil lengths only



SKU	SIZE
1216-05003	Semi-Rigid 19mm ID x 27mm OD, 30mtr
1216-05002	Rigid 25.4mm ID x 30mm OD, 60mtr

Air Hose PVC Safety Yellow

- Application:** General purpose air and water supply with excellent flexibility and toughness. Resistant to oils.
- Temperature Range: 0°C to 60°C
 - Tube: Black PVC
 - Reinforcing: Polyester
 - Cover: Yellow ribbed PVC
 - Special Features: UV Stabilised
 - Standards: ¼ to 1½" - Exceeds AS/NZS 2554:1998 Class B for burst pressure. 2" - Exceeds AS/NZS 2554:1998 Class C for burst pressure.



SKU	SIZE
1216-00284	12mm x 20 meter
1216-00283	25mm x 20 meter

Discharge Hose Rubber Air / Water

- Application:** Water transfer hose - also suitable for air transfer.
- Tube: Black, smooth, SBR rubber
 - Cover: Black, smooth (wrapped finish), EPDM rubber compound, abrasion, weather and ozone resistant.
 - Temperature: -35°C to 70°C
 - Reinforcement: High strength synthetic cord
 - Special Features: Ozone resistance



SKU	SIZE
1216-00195	80mm x 20 meter

Layflat Hose Heavy Duty Sunny Red

- Designed for water drainage at open pit mining and at civil engineering/dam construction sites in mountains or other areas where water must be moved to significantly higher or lower elevations.
- This hose has excellent abrasion resistance
 - Temperature Range: -20°C to 54°C
 - Tube: Red PVC
 - Reinforcing: High strength textile
 - Cover: Red PVC
 - Special Features: Abrasion resistant, UV-stabilised



SKU	SIZE
1216-00233	80mm x 100 meter

Hose & Fittings

Layflat Hose Medium Duty Sunny Blue

- Designed for water drainage at open pit mining and at civil engineering/dam construction sites in mountains or other areas where water must be moved to significantly higher or lower elevations.
- Temperature Range: -20°C to 54°C
 - Tube: Blue PVC
 - Reinforcing: High strength textile
 - Cover: Blue PVC
 - Special Features: Abrasion resistant, UV Stabilised



SKU	SIZE
1216-00028	65mm x 100 meter
1216-00027	80mm x 100 meter

Muff Coupling Hose

- Application: Heavy-duty material handling hose, suitable to handle pressure or suction in the transfer of bulk, slurry, cement and abrasive products; especially designed for very severe applications (mines, tunnels, etc), hose can be supplied with muff couplings.
- Tube: NR/SBR
- Cover: Rubber, yellow stripe, smooth cover
- Temperature: -30°C to 70°C
- Reinforcement: 4 ply synthetic cord; wire helix
- Special Features: Ozone resistance, UV-stabilised, antistatic copper wire, abrasion value max: 70mm³



SKU	SIZE
1216-00602	OD 128.5mm x 20 meter
1216-00332	OD 182mm x 20 meter

RC Hose Material Handling

- Application: Designed for use on reverse cycle drill rigs, where a high pressure abrasion resistant hose is required.
- Tube: Black, NBR, smooth oil and abrasion resistant
- Cover: Black with yellow stripe; oil, abrasion and weather resistant.
- Temperature: -40°C to 120°C
- Reinforcement: 4 ply synthetic cord; wire helix.
- Special Features: Ozone resistance, UV-stabilised, abrasion resistant.



SKU	SIZE
1216-00600	80mm x 20 meter

Lifting & Rigging

Chain Blocks



Chain Block Essential 3m Long Comm.

- A cost sensitive commercial quality chain block designed for rugged and robust applications.
- The Essential series meets AS1418.2 and EN-13159
- Standard 3m lift height but units can be supplied with any lift height on request.
- Bottom hook supplied with thrust bearing for AS/NZS compliance as a standard feature.
- Traceability markings on load chain "Tri-marked with LINQ brand, G80 mark, batch reference number"
- The Essential Chain Block (Commercial) is a 6-bearing design, giving even load spread, and efficiency of internal parts movement, thereby ensuring a long service life.
- The Essential Chain Block (Commercial) series includes a load chain stopper to prohibit load chain lift height over extension.
- All forging, stamping, CNC parts-and-gear production, as well as chain production, powder coating and heat treatment are all conducted under one roof following strict LINQ QC processes and LINQ supervision at our exclusive 160,000m2 OEM factory.
- Standard Lift Height: 3M

SKU	CAPACITY
1204-02004-05	0.5T
1204-02004-01	1T
1204-02004-02	2T
1204-02004-03	3T



Chain Block Elite 3M Long Industrial

- This is a high end Industrial quality chain block designed for rugged and robust applications
- The Elite Chain Block (Industrial) range are supplied with OVERLOAD PROTECTION as a standard feature
- The Elite Chain Block (Industrial) range includes a standard gasket feature to safeguard and prevent dust ingress from forming a grinding paste to greased moving parts. This has been designed to combat dust issues endemic to harsh conditions such as mining environments. A worldwide first
- The Elite series meets AS1418.2 and EN-13158
- Traceability markings on load chain "Tri-marked with LINQ brand, G80 mark, batch reference number"
- Standard 3m lift height but units can be supplied with any lift height on request
- The bottom hook is supplied with thrust bearing for AS/ NZS compliance (the purpose being to better relieve twist stresses in the load chain)
- The Elite Chain Block (Industrial) is a 7-BEARING design, for even load spread, and efficiency of internal parts movement, ensuring a long service life, and resulting in a class leading lower effort rating per ton ?? less energy to lift a load.
- Standard Lift Height: 3M

SKU	CAPACITY
1204-02006-05	0.5T
1204-02006-01	1T
1204-02006-02	2T
1204-02006-03	3T
1204-02006-05	5T

Lifting & Rigging

Lever Hoists



Lever Hoist Essential 1.5M Long Comm.

- A cost sensitive commercial quality lever hoist designed for rugged and robust applications.
- The Essential series meets AS1418.2 and EN-13157
- Load chain is corrosion resistant through the process of black Electrophoresis meaning a grease/oil-free chain giving a "clean to work with" experience.
- Traceability markings on load chain "Tri-marked with LINQ brand, G80 mark, batch reference number".
- Standard 1.5m lift height but units can be supplied with any lift height on request.
- Bottom hook supplied with thrust bearing for AS/NZS compliance as a standard feature.
- The Essential Lever Hoist (Commercial) is a 6-bearing design, giving even load spread, and efficiency of internal parts movement, thereby ensuring a long service life.
- The Essential Lever Hoist (Commercial) range includes a load chain stopper to prohibit load chain lift height over extension
- Capacity: 0.25T
- Standard Lift Height: 1.5M

SKU	CAPACITY
1204-02008-025	0.25T
1204-02008-075	0.75T
1204-02008-15	1.5T



Lvever Hoist Elite 1.5M Long Industrial

- A heavy duty manually operated chain device using a series of gears providing a mechanical advantage to lift and lower significant loads.
- This is a high end Industrial quality lever hoist designed for rugged and robust applications.
 - The Elite Lever Hoist (Industrial) range is supplied with OVERLOAD PROTECTION as a standard feature.
 - The Elite Lever Hoist (Industrial) range includes a standard gasket feature to safeguard and prevent dust ingress from forming a grinding paste to greased moving parts. This has been designed to combat dust issues endemic to harsh conditions such as mining environments. A WORLDWIDE FIRST.
 - The Elite series meets AS1418.2, AS2321 and EN-13157.
 - Traceability markings on load chain – “Tri-marked with LINQ brand, G80 mark, batch reference number”.
 - Standard 1.5m lift height but can be supplied with any lift height.
 - The bottom hook is supplied with thrust bearing for AS/ NZS compliance (the purpose being to better relieve twist stresses in the load chain).
 - The Elite Lever Hoist (Industrial) is a 7-BEARING design, for even load spread, and efficiency of internal parts movement, ensuring a long service life, and resulting in a class leading lower effort rating per ton – less energy to lift a load.
 - Standard Lift Height: 1.5M

SKU	CAPACITY
1204-02009-075	0.75T
1204-02009-15	1.5T
1204-02009-3	3T

Lifting & Rigging

Ratchet Strap 50MMx12MTR L/Rated 2500KG

- High Tenacity UV resistant, polyester lashing webbing
- LINQ branded high strength galvanised ratchet buckles
- Zinc plated interlocking J-hooks and keeper
- 2.5T lashing capacity



SKU	Capacity	SIZE
1801-00173-25	500kg	25mm x 5mtr
1801-00173-38	1500kg	38mm x 6mtr
1801-00173-50	2500kg	50mm x 9mtr
1801-00173-5012	2500kg	50mm x 12mtr
1801-00173-75	5000kg	75mm x 9mtr

Sling Flat 8:1 WLL Polyester 1T

- Material: 100% High tenacity UV resistant polyester for extreme UV conditions.
- Working load designated by international protocol for load rating colours.
- All slings have capacity stripes woven into the sling material.
- Capacity: 1T
- WLL 8:1
- Double ply flat slings



SKU	SIZE
1204-02002-1	1.0M
1204-02002-1-2	2.0M
1204-02002-1-3	3.0M
1204-02002-1-4	4.0M
1204-02002-1-5	5.0M

Sling Flat 8:1 WLL Polyester 2T

- Material: 100% High tenacity UV resistant polyester for extreme UV conditions.
- Working load designated by international protocol for load rating colours.
- All slings have capacity stripes woven into the sling material.
- Capacity: 2T
- WLL 8:1
- Double ply flat slings



SKU	SIZE
1204-02002-2-1	1.0M
1204-02002-2-2	2.0M
1204-02002-2-3	3.0M
1204-02002-2-4	4.0M
1204-02002-2-5	5.0M

Sling Flat 8:1 WLL Polyester 3T

- Material: 100% High tenacity UV resistant polyester for extreme UV conditions.
- Working load designated by international protocol for load rating colours.
- All slings have capacity stripes woven into the sling material.
- Capacity: 3T
- WLL 8:1
- Qty/Carton 20
- Double ply flat slings.



SKU	SIZE
1204-02002-3-1	1.0M
1204-02002-3-2	2.0M
1204-02002-3-3	3.0M
1204-02002-3-4	4.0M

Lifting & Rigging

Sling Flat 8:1 WLL Polyester 4T

- Material: 100% High tenacity UV resistant polyester for extreme UV conditions.
- Working load designated by international protocol for load rating colours.
- All slings have capacity stripes woven into the sling material.
- Double ply flat slings.
- Capacity: 4T
- WLL 8:1
- Qty/Carton 12



SKU	SIZE
1204-02002-4-1	2.0M
1204-02002-4-2	3.0M
1204-02002-4-3	4.0M
1204-02002-4-4	5.0M

Sling Round 7:1 WLL Polyester 1T

- Material: 100% High tenacity UV resistant polyester for extreme UV conditions.
- Working load designated by international protocol for load rating colours.
- All slings have capacity stripes woven into the sling material.
- Capacity: 1T
- WLL 7:1
- Qty/Carton 100



Sling Round 7:1 WLL Polyester 2T

- Material: 100% High tenacity UV resistant polyester for extreme UV conditions.
- Working load designated by international protocol for load rating colours.
- All slings have capacity stripes woven into the sling material.
- Capacity: 2T
- WLL 7:1
- Qty/Carton 60



Sling Round 7:1 WLL Polyester T

- Material: 100% High tenacity UV resistant polyester for extreme UV conditions.
- Working load designated by international protocol for load rating colours.
- All slings have capacity stripes woven into the sling material
- Capacity: 8T
- WLL 7:1
- Qty/Carton 2



SKU	SIZE
1204-02003-8-6	6.0M

Sling Flat 8:1 WLL Polyester 5T

- Material: 100% High tenacity UV resistant polyester for extreme UV conditions.
- Working load designated by international protocol for load rating colours.
- All slings have capacity stripes woven into the sling material.
- Double ply flat slings
- Capacity: 5T
- WLL 8:1
- Qty/Carton 10



SKU	SIZE
1204-02002-5-1	2.0M
1204-02002-5-2	3.0M

SKU	SIZE
1204-02003-1-05	0.5M
1204-02003-1-1	1.0M
1204-02003-1-15	1.5M
1204-02003-1-2	2.0M
1204-02003-1-3	3.0M
1204-02003-1-4	4.0M
1204-02003-1-5	5.0M
1204-02003-1-6	6.0M

SKU	SIZE
1204-02003-2-05	0.5M
1204-02003-2-1	1.0M
1204-02003-2-15	1.5M
1204-02003-2-2	2.0M
1204-02003-2-3	3.0M
1204-02003-2-4	4.0M
1204-02003-2-5	5.0M
1204-02003-2-6	6.0M

Lifting & Rigging

Sling Round 7:1 WLL Polyester 3T

- Material: 100% High tenacity UV resistant polyester for extreme UV conditions.
- Working load designated by international protocol for load rating colours.
- All slings have capacity stripes woven into the sling material.
- Capacity: 3T
- WLL 7:1
- Qty/Carton 50



SKU	SIZE
1204-02003-3-05	0.5M
1204-02003-3-1	1.0M
1204-02003-3-15	1.5M
1204-02003-3-2	2.0M
1204-02003-3-3	3.0M
1204-02003-3-4	4.0M
1204-02003-3-5	5.0M
1204-02003-3-6	6.0M

Sling Round 7:1 WLL Polyester 4T

- Material: 100% High tenacity UV resistant polyester for extreme UV conditions.
- Working load designated by international protocol for load rating colours.
- All slings have capac material.
- Capacity: 4T
- WLL 7:1
- Qty/Carton 20



SKU	SIZE
1204-02003-4-1	1.0M
1204-02003-4-2	2.0M
1204-02003-4-3	3.0M
1204-02003-4-4	4.0M
1204-02003-4-5	5.0M
1204-02003-4-6	6.0M

Sling Round 7:1 WLL Polyester 5T

- Material: 100% High tenacity UV resistant polyester for extreme UV conditions
- Working load designated by international protocol for load rating colours.
- All slings have capacity stripes woven into the sling material.
- Capacity: 5T
- WLL 7:1
- Qty/Carton 14



SKU	SIZE
1204-02003-5-1	1.0M
1204-02003-5-2	2.0M
1204-02003-5-3	3.0M
1204-02003-5-4	4.0M
1204-02003-5-5	5.0M
1204-02003-5-6	6.0M

Sling Round 7:1 WLL Polyester 6T

- Material: 100% High tenacity UV resistant polyester for extreme UV conditions.
- Working load designated by international protocol for load rating colours.
- All slings have capacity stripes woven into the sling material.
- Capacity: 6T
- WLL 7:1
- Qty/Carton 6



SKU	SIZE
1204-02003-6-2	2.0M
1204-02003-6-3	3.0M
1204-02003-6-4	4.0M
1204-02003-6-5	5.0M
1204-02003-6-6	6.0M

Pumps

3" Diesel Transfer Pump Electric Start

- Pump type: Fresh water pump/Self-priming
- Engine type: 4-stroke, air-cooled diesel engine
- Starting system: Electric start (incl. battery)
- Max. capacity: 900L/min
- Suction lift: 7m
- Max. engine output: 3.5kW/3600rpm
- Dimensions (LxWxH): 530 x 435 x 637mm
- Sector: Agriculture, home

SKU
1501-00006



- Rubber mounted sub-frame between engine and HD frame to ensure reduced vibration.
- Full heavy duty protective roll frame
- Drives 2" (50mm) Flexible Drive Submersible Pumps (FP2T & FP2TA)
- Drives 20 - 65mm Vibrator Shafts
- Applications: Power source to drive Flex Pumps and Concrete Vib shafts.
- Engine features: Recoil start
- Fuel type: Diesel
- Fuel tank: 3.2L
- db @ 7m: 74.0
- Drives vibrators (up to): 65mm
- Drive pumps (up to): 50mm

SKU
1501-00162



2" Flex Drive Submersible Trash Pump

- Cast iron casing
- No suction hose required
- Quick action flexshaft coupling with 3 dog drive
- Includes adaptor for cam lock and discharge hose
- 6m length
- Rope now included - Use the rope to lift the pump in and out of holes correctly
- Movable spiral section - Supports the cable when draping over sharp hole lips to prevent kinking
- Applications: footings, manholes, tanks, drainage, pool excavations, waste transfer, water transfer
- Total head: 29m
- Volume max. (L/min): 933
- Volume max. (L/hr): 56000
- Pump type: Cast iron
- Impeller: Single
- Weight: 33kg

SKU
1501-00161



Tarpaulin

Tarp Heavy Duty Silver Black

- Non rust eyelets every 50cm on all four sides
- Waterproof and mildew-resistant
- UV-stabilised for long life
- Reinforced corners
- P.P rope in hem
- 210gsm
- Material: Poly

SKU	SIZE
1203-01501	1.8m x 2.4m (6" x 8")
1203-00964	2.4m x 3.0m (8" x 10")
1203-00962	3.0m x 3.6m (10" x 12")
1203-01536	3.6m x 4.2m (12" x 14")
1203-01505	3.6m x 4.8m (12" x 16")
1203-01506	3.6m x 5.4m (12" x 18")
1203-01507	3.6m x 6.0m (12" x 20")
1203-01508	3.6m x 7.5m (12" x 24")
1203-01509	4.2m x 6.0m (14" x 24")
1203-01511	4.8m x 6.0m (14" x 20")
1203-01500	4.8m x 7.2m (16" x 24")
1203-01513	5.4m x 6.6m (18" x 22")
1203-01535	5.4m x 7.2m (18" x 24")
1203-01514	6.0m x 12.0m (20" x 40")
1203-01515	6.0m x 6.0m (20" x 20")
1203-01516	6.0m x 7.2m (20" x 24")
1203-01517	6.0m x 9.0m (20" x 30")
1203-01530	7.2m x 11.0m (24" x 36")
1203-00963	7.2m x 9.0m (24" x 30")
1203-01522	9.0m x 9.0m (30" x 30")
1203-01519	9.0m x 12.0m (30" x 40")
1203-01520	9.0m x 15.0m (30" x 50")
1203-01521	9.0m x 18.0m (30" x 60")
1203-01523	10.8m x 12.0m (36" x 40")
1203-01528	12.0m x 15.0m (40" x 50")
1203-01525	12.0m x 18.0m (40" x 60")
1203-01526	12.0m x 21m (40" x 70")
1203-01527	15.0m x 15.0m (50" x 50")
1203-01510	15.0m x 30m (50" x 100")



Vehicle

Puncture Repair Kit 4WD

Kit contains:

- Tyre Repairs Made Easy instruction manual
- 10 x Tubeless Strings
- 1 x Reamer Handle
- 1 x String Insertion Handle
- 3 x Mini Tube Patches
- 3 x Small Tube Patches
- 3 x Medium Tube Patches
- 3 x Large Patches
- 1 Radial Patch
- 1 Uni Patch
- 4 x 10cc Tube Vulcanising Cement
- 1 Rasp/Stitcher
- 1 Snap-in Tubeless Valve
- 1 3-way Value Tool
- 3 x Short Core Valve Caps
- 3 x Slotted Metal Valve Caps
- 1 x Blade
- 1 x Marking Chalk



SKU
1802-00064

Metal Dial Tyre Gauge

- 10 to 60 PSI range
- Read out in PSI and KPA
- 40mm diameter dial face
- Calibrated to an accuracy of +/- 0.7 PSI @ 35 PSI
- Retains the pressure reading after release for easy assessment
- Pressure release button
- Internal diaphragm mechanism



SKU
1802-00043

Tyre Inflator

- Die cast aluminium body with steel operating lever and impact absorbing bumper
- Supplied with official calibration certificate
- Laser etched serial number
- Colour co-ordinated bumper and face plate
- Ideal for service station forecourts
- Wire sheathed hose eliminates kinking
- Accuracy exceeds EC Directive 86/217
- Rubber grip on chuck



SKU
1802-00207

Tyre Levers

The tyre levers are 19mm in diameter; are manufactured from high grade BHP steel, are hot forged and heat treated.

SKU	SIZE
1802-00065	600mm



Vehicle

Tyre Pliers Kit

- Kit contains:
- Tyre Repairs Made Easy instruction manual
 - 10 x Tubeless Strings
 - 1 x Reamer Handle
 - 1 x String Insertion Handle
 - 3 x Mini Tube Patches
 - 3 x Small Tube Patches
 - 3 x Medium Tube Patches
 - 3 x Large Patches
 - 1 Radial Patch
 - 1 Uni Patch
 - 4 x 10cc Tube Vulcanising Cement
 - 1 Rasp/Stitcher
 - 1 Snap-in Tubeless Valve
 - 1 3-way Valve Tool
 - 3 x Short Core Valve Caps
 - 3 x Slotted Metal Valve Caps
 - 1 x Blade
 - 1 x Marking Chalk



SKU
1802-00066

Truck Tyre Repair Kit

- Kit contains:
- 8 x Patches size 1
 - 2 x Patches size 2
 - 1 x Patch size 3
 - 1 x Patch size 4
 - 1 x Patch size 5
 - 2 x Patches size 7
 - 1 x Patch size 7A
 - 1 x Patch size 7B
 - 1 x Tube of SVS solution 25 g
 - 3 x Rasps
 - 3 x Short valve cores
 - 1 x Instruction manual



SKU
1802-00037

Aarmorall Protectant

- Cleans, conditions and protects
- Protects against discolouration and cracking
- Suitable for use on rubber, vinyl and plastic

SKU	SIZE
1801-00171-250	250mL
1801-00171-500	500mL



Vehicle

Safety Flag c/w Quick Connect Fitting

Safety Flags are available in two lengths, 1.5mtr & 3.0mtrs, custom sizes can be obtained if required.

- UV Stable
- Extremely durable and hard-wearing
- Mine standard reflective flag
- Easy to assemble and disassemble
- These come with a quick release fitting

SKU	SIZE
1801-00710	1.5 Meter
1801-00707	3.0 Meter

Safety Flag Only

- Mine Site Specified
- Fluorescent Orange Mesh Material
- 50mm Wide Silver Reflective Tape
- Double Stitched
- 4 x Cable Ties Included for Mounting

SKU
1801-00711



Quick Connect Fitting

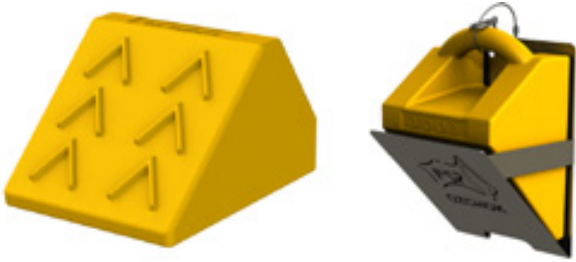
- Includes Female Coupler & Male Insert
- Quickly Releases Minewhip from Vehicle
- 1/2 inch BSW Thread
- Zinc Plated

SKU
1801-00718



Wheel Chock 055

- Weight: 2kg
- Lightweight with tough urethane construction
- 3rd party tested for compliance
- ANSI compliant colour written guidelines on proper chocking procedures.
- Designed to meet SAE-J348, NFPA 1901, and NFPA 1906 Standards.
- Resistant to oils, fuels and solvents
- Strong carrying handle on the backside of the chock
- High visibility colour used for safety



SKU	DESCRIPTION	SIZE (HxWxD)
1801-00102	Wheel Chock	170 x 210 x 290mm
1801-00156	Stainless Steel Chock Bracket	To suit

Spring Mount

- 1/2 inch BSW Threaded Bolt
- Zinc Plated



SKU
1801-00717

Poly Bracket to suit Wheel Chock 055

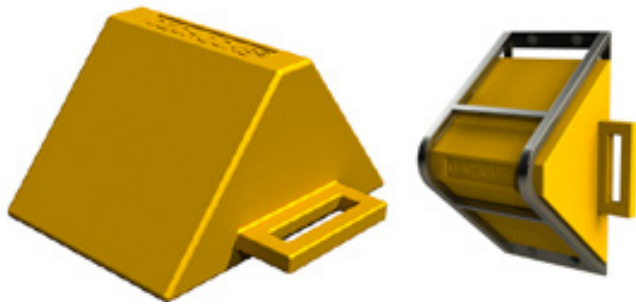
- Made of polyethylene
- One piece smooth
- Edges design
- Lighter than metal
- Fully injection moulded
- High-impact resistance
- UV-resistant
- Quick fitting & release
- Locking feature



SKU	SIZE (HxWxD)
1801-00156-POL	350 x 235 x 166mm

Note: Wheel chocks and stainless steel chock brackets are sold separately for all of these products.

Vehicle



Note: Wheel chocks and stainless steel chock brackets are sold separately for all of these products.

Wheel Chock 105

- Weight: 16kg
- Lightweight with tough urethane construction
- 3rd party tested for compliance
- ANSI compliant colour written guidelines on proper chocking procedures
- Designed to meet SAE-J348, NFPA 1901, and NFPA 1906 Standards
- Resistant to oils, fuels and solvents
- Strong carrying handle on the backside of the chock
- High visibility colour used for safety

Wheel Chock 155

- Weight: 18kg
- Lightweight with tough urethane construction
- 3rd party tested for compliance
- ANSI compliant colour written guidelines on proper chocking procedures.
- Designed to meet SAE-J348, NFPA 1901, and NFPA 1906 Standards.
- Resistant to oils, fuels and solvents
- Strong carrying handle on the backside of the chock.
- High visibility colour used for safety.

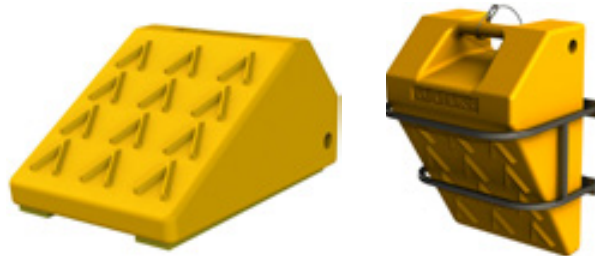
Wheel Chock 065

- Weight: 4kg
- Lightweight with tough urethane construction
- 3rd party tested for compliance
- ANSI compliant colour written guidelines on proper chocking procedures.
- Designed to meet SAE-J348, NFPA 1901, and NFPA 1906 Standards.
- Resistant to oils, fuels and solvents.
- Strong carrying handle on the backside of the chock.
- High visibility colour used for safety.

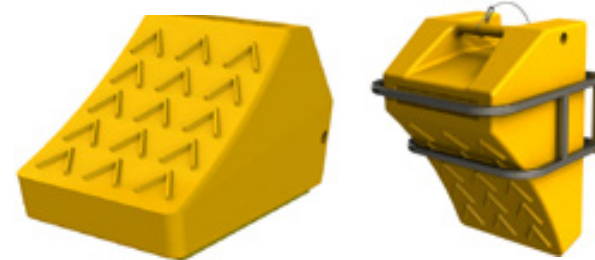
Wheel Chock 075

- Dimensions (HxWxL): 260 x 420 x 465mm
- Weight: 8kg
- Lightweight with tough urethane construction
- 3rd party tested for compliance
- ANSI compliant colour written guidelines on proper chocking procedures.
- Designed to meet SAE-J348, NFPA 1901, and NFPA 1906 Standards.
- Resistant to oils, fuels and solvents
- Strong carrying handle on the backside of the chock
- High visibility colour used for safety

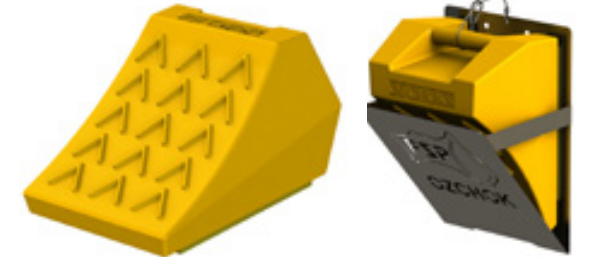
SKU	DESCRIPTION	SIZE (HxWxD)
1801-00061	Wheel Chock	260 x 420 x 465mm
1801-00159	Stainless Steel Chock Bracket	To suit



SKU	DESCRIPTION	SIZE (HxWxD)
1801-00114	Wheel Chock	280 x 380 x 560mm
1801-00715	Stainless Steel Chock Bracket	To suit



SKU	DESCRIPTION	SIZE (HxWxD)
1801-00059	Wheel Chock	410 x 420 x 660mm
1801-00716	Stainless Steel Chock Bracket	To suit



SKU	DESCRIPTION	SIZE (HxWxD)
1801-00138	Wheel Chock	230 x 280 x 370mm
1801-00709	Stainless Steel Chock Bracket	To suit

Vehicle

Maxtrax MKII Safety Orange

MAXTRAX is the lightweight, easy-to-use vehicle recovery and extraction device that’s easily carried by almost anything with four-wheels ensuring an easy way out if your vehicle becomes stuck.

SKU	WEIGHT	SIZE
1804-01000	3.6 kg	1150 x 330 x 70mm



Viper Warning Amber Light 12-LED, Magnetic

- Uses High Intensity LEDs
- 20 patterns including constant on and various flashing patterns.
- Includes 4 speed rotational patterns
- Operates on 12V / 24V DC
- Reverse polarity protected
- Tough polycarbonate lens cover
- C-Tick compliance
- Magnetic base with car charger adaptor and 3.5m cable

SKU
1803-00217



Beacon 3 Bolt Mount LED Flashing Amber

- Voltage: 12-36V
- Current Draw: 15W @ 12V
- Connection Type: 10cm Flylead Cable
- Protection: Reverse polarity protected, resin set circuit board, o’ring sealed twist lock lens with felt shaft seal
- Housing Material: Polycarbonate lens, nylon base
- Mount Type/Size: 3 bolt surface mount PCD 131mm, 6mm mount holes, rubber mount gasket
- Outside Diameter: 147mm
- Overall Height: 117mm
- Rotation Speed/Flashes: 65FPM
- Colour: Amber beacon
- Style/Globe Type/Version/Design: 30 mini LED’s
- Notes: Includes stainless steel mount screws

SKU
1803-00276




Jumper Leads with Spike Guard

These heavy duty jumper leads/booster cables are suitable for most vehicles with a 4, 6 or 8 cylinder petrol engine up to 8.0 litres and diesel engines up to 6.0 litres. PVC sheathed cable gives maximum power transfer. Fitted with fully insulated colour coded terminal clamps. Features built in surge protector to protect a vehicle’s electronics and computer system from power spikes during jump starts.

SKU	POWER	SIZE
1801-00084	700A	3mtr







BLACK DUCK
SEAT COVERS

Black Duck Seat Covers provides your vehicle commercial grade protection. This product is hard wearing, waterproof and tear resistant to protect seats from dirt, grease, grime and liquids.

Black Duck Seat Covers are available for a vast and ever-increasing range of vehicles. Each seat cover is carefully tailored to the individual seat to ensure an exact fit whilst still retaining all the useful functions such as cup holders, adjustment levers, airbags and more.

Black Duck airbag compatible range of seat covers are tested and certified by a government approved testing authority, to be fitted to selected vehicles with seat-fitted side airbags. We use technologically advanced manufacturing techniques which allow the required air bag release in the event of an accident, without compromising the safety of the vehicles occupants; for greater peace of mind.

Quote Requests

Westernex is an authorised reseller of all Black Duck products. Please send all quote requests through to and specify the following details regarding the vehicle you are purchasing these products for:

Brand.....ModelL

Type.....Month/Year

Front Seat (i.e. Bucket, Bench etc.)

Rear Seat (i.e. Bucket, Bench etc.).....

Colour/Material Options



Standard Grey Canvas
☐



Standard Brown Canvas
☐



Standard Black Canvas
☐

Maintenance

Vehicle

High-Lift Jack

Anyone who leaves the pavement to go four-wheeling should own a High-Lift Jack.

	SKU	SIZE
A	1801-00020	Jack
B	1801-00022	Base Plate
C	1801-00023	Bumper Kit
D	1801-00024	Fix-it-Kit
E	1801-00021	Lift Mate

Recovery Kit - 5 Piece

Having a fully stocked and properly maintained recovery kit is an essential accessory for any 4WD enthusiast. It is very important to have quick and easy accessibility to all your recovery equipment. Each recovery kit has been carefully tailored to include the correct equipment for most recovery situations.

Kit includes:

- 1 x 8000kg Australian-made snatch strap
- 2 x 3.2 tonne bow shackles
- 1 x Pair of gloves
- 1 x Heavy duty storage bag

SKU	SIZE
1801-00206	5 Piece

Recovery Kit - 8 Piece

Having a fully stocked and properly maintained recovery kit is an essential accessory for any 4WD enthusiast. It is very important to have quick and easy accessibility to all your recovery equipment. Each recovery kit has been carefully tailored to include the correct equipment for most recovery situations.

Kit includes:

- 1x 8000kg Australian-made snatch strap
- 1 x 4500kg winch ext strap (10m x 50mm)
- 1 x 6500kg tree trunk protector (3m x 75mm)
- 1 x 8000kg snatch block
- 1 x 4.7 tonne bow shackle
- 1 x 4.7 tonne D shackle
- 1 x pair of gloves
- 1 x heavy duty storage bag

SKU	SIZE
1801-00211	8 Piece

Supplying Mining & Exploration Worldwide 311

supply@westernex.com.au

Vehicle

Cargo Nets

Used and recommended by governments, resource and utility companies, tradespeople, the 4WD and recreational markets across Australia. Being a load-rated restraint, these offer more confidence and peace-of-mind than tested and certified containment nets. They are made from polyester webbing which makes them UV stabilised, stronger and a longer lasting product. They're a unique way to protect your load legally and securely, while protecting the safety of those around you and the environment.

- Coated hook prevents scratching
- Heavy duty UV stabilised webbing
- Multiple eyelet anchor points
- Anti-tangle design
- Heavy duty mesh rip stop fabric
- All load rated
- Never needs rethreading
- Safely secures small items Buckle is fast to tighten and loosen straps.
- 3 Years Warranty when you register online
- Triple layered reinforced edge
- Complete with straps and carry bag
- Karabiner snaps quickly onto any eyelet



Search the below link and register online, to activate your 3 Years Warranty:
safeguardnet.com.au/warranty-2/



Original Cargo Nets

SKU	MIN. TRAY SIZE	MESH COVERAGE	DIMENSIONS
1801-00251-S	1.00 x 0.06m	1.635 x 1.235m	1.83 x 1.435m
1801-00251-M	1.60 x 1.20m	2.435 x 1.835m	2.63 x 2.035m
1801-00251-DC	1.20 x 1.20m	2.235 x 2.235m	2.43 x 2.435m
1801-00251-L	1.60 x 1.20m	2.835 x 2.435m	3.03 x 2.635m
1801-00251-XL	2.40 x 1.00m	3.435 x 2.835m	3.63 x 3.035m
1801-00251-2XL	3.20 x 2.00m	4.235 x 3.035m	4.43 x 3.235m
1801-00251-3XL	4.00 x 1.60m	5.435 x 3.035m	5.63 x 3.235m

Rack Nets

SKU	MIN. TRAY SIZE	DIMENSIONS
1801-00252-S	0.80 x 0.80m	1.635 x 1.635m
1801-00252-M	1.40 x 0.80m	2.235 x 1.635m
1801-00252-L	1.80 x 0.80m	2.635 x 1.635m

Trade Nets

SKU	MIN. TRAY SIZE	DIMENSIONS
1801-00253-S	0.80 x 0.50m	1.235 x 0.935m
1801-00253-M	1.20 x 0.50m	1.835 x 0.935m
1801-00253-L	1.80 x 0.50m	2.435 x 0.935m

Universal Nets

SKU	MIN. TRAY SIZE	DIMENSIONS
1801-00253-U	1.60 x 1.00m	2.265 x 2.035m
1801-00253-XL	2.40 x 0.50m	3.035 x 0.935m

Vehicle



Cargo Carry Bags

SKU	SIZE	DIMENSIONS (L x H x W)
1801-00250-L	Large	500mm x 200mm x 350mm
1801-00250-M	Medium	500mm x 150mm x 300mm
1801-00250-S	Small	450mm x 150mm x 260mm
1801-00250-XL	X-Large	660mm x 220mm x 450mm

Search the below link and register online, to activate your 3 Years Warranty:
safeguardnet.com.au/warranty-2/

Weatherproof Tarps

SKU	MIN. TRAY SIZE	DIMENSIONS
1801-00254-S	0.80 x 0.80m	1.635 x 1.635m
1801-00254-M	1.40 x 0.80m	2.235 x 1.635m
1801-00254-L	1.80 x 1.80m	2.635 x 1.635m
1801-00254-U	1.60 x 1.00m	2.635 x 2.035m
1801-00255-DC	1.20 x 1.20m	2.235 x 2.235m
1801-00255-L	1.60 x 1.20m	3.035 x 2.635m



Net Straps

SKU	DESCRIPTION	DIMENSIONS
1801-00256-A	D Hook Style Side UTE/ 2Pk	50 x 3.8cm
1801-00256-B	Hook and Keeper/ 2Pk	100 x 3.8cm
1801-00256-C	S Hook Bike/ 2Pk	200 x 3.8cm
1801-00256-D	S Hook Cargo-Net/ 2Pk	100 x 3.8cm
1801-00256-E	S Hook Rack-Net/ 2Pk	70 x 3.8cm



Ratchet Straps

SKU	DESCRIPTION
1801-00257-A	Ratchet Strap 4mx25mm S Hook
1801-00257-B	Ratchet Strap 5mx25mm Hook and Keeper
1801-00257-C	Ratchet Strap 9mx50mm Hook and Keeper
1801-00257-D	Ratchet Strap 6mx35mm Hook and Keeper
1801-00257-E	Ratchet Strap 6mx35mm S Hook



Vehicle

Century HP Battery N70ZZ MFC

- Carry Handles
- Central Venting
- Flame Arrestor
- Maintenance Free
- Mud Rack
- Platelock™ Technology
- State of Charge Indicator
- Vibration Resistant
- Made In Australia

Normal Overall Dimensions (mm)

- Length:305
- Width:171
- Height:202
- Total Height:225
- Hold-Down:Side

SKU
1111-00502

Technical Specifications

- Volts:12
- CCA:720
- RC:170
- AH:85
- Weight (kg):21.90



Century HP Battery N70ZZL MFC

- Carry Handles
- Central Venting
- Flame Arrestor
- Maintenance Free
- Mud Rack
- Platelock™ Technology
- State of Charge Indicator
- Vibration Resistant
- Made In Australia

Normal Overall Dimensions (mm)

- Length:305
- Width:171
- Height:202
- Total Height:225
- Hold-Down:Side

SKU
1111-00503

Technical Specifications

- Volts:12
- CCA:720
- RC:170
- AH:85
- Weight (kg):21.90



Century HP Battery NS70 MFC

- Carry Handles
- Central Venting
- Flame Arrestor,
- Maintenance Free
- Mud Rack
- State of Charge Indicator
- Made In Australia

SKU
1111-00504

Normal Overall Dimensions (mm)

- Length:259
- Width:171
- Height:202
- Total Height:225
- Hold-Down:Side

Technical Specifications

- Weight (kg):18.70
- Volts:12
- CCA:650
- RC:140
- AH:75



Vehicle

Century HP Battery NS70L MFC

- Carry Handles
- Central Venting
- Flame Arrestor
- Maintenance Free
- Mud Rack
- State of Charge Indicator
- Made In Australia

Normal Overall Dimensions (mm)

- Length:259
- Width:171
- Height:202
- Total Height:225
- Hold-Down:Side

SKU
1111-00505

Technical Specifications

- Weight (kg):18.70
- Volts:12
- CCA:650
- RC:140
- AH:75



Century HD Battery N100 MFC

- Carry Handles
- Central Venting
- Flame Arrestor
- Glass Mat Separator
- Maintenance Free
- Mud Rack
- Platelock™ Technology
- State of Charge Indicator
- Vibration Resistant

Normal Overall Dimensions (mm)

- Length:408
- Width:173
- Height:210
- Total Height:232

SKU
1111-00506

Technical Specifications

- Weight (kg):24.70
- Volts:12
- CCA:740
- RC:182
- AH:100



Century HD Battery N100L MFC

- Carry Handles
- Central Venting
- Flame Arrestor
- Glass Mat Separator
- Maintenance Free
- Mud Rack
- Platelock™ Technology
- State of Charge Indicator
- Vibration Resistant

Normal Overall Dimensions (mm)

- Length:408
- Width:173
- Height:210
- Total Height:232

SKU
1111-00507

Technical Specifications

- Volts:12
- CCA:740
- RC:182
- AH:100
- Weight (kg):24.70



Vehicle

Century HD Battery N120 MFC

- Carry Handles
- Central Venting
- Flame Arrestor
- Maintenance Free
- Mud Rack
- Platelock™ Technology
- State of Charge Indicator
- Vibration Resistant

Normal Overall Dimensions (mm)

- Length:503
- Width:181
- Height:210
- Total Height:233

SKU
1111-00508

Technical Specifications

- Volts:12
- CCA:900
- RC:230
- AH:135
- Weight (kg):31.60



Century HD Battery N120L MFC

- Carry Handles
- Central Venting
- Flame Arrestor
- Maintenance Free
- Mud Rack
- Platelock™ Technology
- State of Charge Indicator
- Vibration Resistant

Normal Overall Dimensions (mm)

- Length:503
- Width:181
- Height:210
- Total Height:233

SKU
1111-00509

Technical Specifications

- Volts:12
- CCA:900
- RC:230
- AH:135
- Weight (kg):31.60



Century HD Battery N150L MFC

- Carry Handles
- Central Venting
- Flame Arrestor
- Maintenance Free
- Mud Rack
- Platelock™ Technology
- State of Charge Indicator
- Vibration Resistant

Normal Overall Dimensions (mm)

- Length:506
- Width:220
- Height:211
- Total Height:233

SKU
1111-00511

Technical Specifications

- Volts:12
- CCA:1000
- RC:300
- AH:155
- Weight (kg):39.20



Vehicle

Century HD Battery N150C MFC

- Carry Handles
- Central Venting
- Flame Arrestor
- Maintenance Free
- Mud Rack
- Platelock™ Technology
- State of Charge Indicator
- Vibration Resistant

Normal Overall Dimensions (mm)

- Length:506
- Width:220
- Height:210
- Total Height:233

SKU
1111-00510

Technical Specifications

- Volts:12
- CCA:1000
- RC:300
- AH:155
- Weight (kg):39.20



Century HD Battery N200C MFC

- Carry Handles
- Central Venting
- Flame Arrestor
- Maintenance Free
- Mud Rack
- Platelock™ Technology
- State of Charge Indicator
- Vibration Resistant

Normal Overall Dimensions (mm)

- Length:520
- Width:277
- Height:218
- Total Height:241

SKU
1111-00512

Technical Specifications

- Volts:12
- CCA:1200
- RC:430
- AH:200
- Weight (kg):51.50



Century HD Battery N200L MFC

- Carry Handles
- Enhanced Flooded Battery
- Glass Mat Separator
- Low Maintenance
- State of Charge Indicator

Normal Overall Dimensions (mm)

- Length:518
- Width:274
- Height:216
- Total Height:238

SKU
1111-00513

Technical Specifications

- Volts:12
- CCA:1150
- RC:480
- AH:225
- Weight (kg):58.10



Welding

Tip Cleaner Set

Housed in a sturdy aluminium case, these abrasive wires remove carbon build up and loose slag from nozzles and tips to prolong cutting tip life. The long tip cleaner is suitable for 3 seat tips.

SKU
1211-01086



Torch Handle

Standard torch handle is designed to fit either a cutting attachment or a mixer with a brazing tip to perform cutting or welding applications with oxygen and fuel gas.

SKU
1211-01099



Flint Lighter

Metal cup type with replaceable flint. Ensures quick, easy lighting up.

SKU
1211-01088



Cutting Attachment

Designed to preheat and cut with Oxygen and fuel gases.

SKU
1211-01100



Type 41 Acetylene Cutting Tip

Two seated cutting tip suitable for use with cutting attachment.

SKU	SIZE	PLATE THICKNESS
1211-01095	8	5-10mm
1211-01096	12	10-20mm
1211-01097	15	20-50mm



Type 41 Oxygen/Acetylene Bent Gouging Tip

SKU
1211-01103



Two seated gouging tip suitable for use with cutting attachment.

Work Clamp

Spring loaded jaws. All brass construction, 500 amp.

SKU	HEIGHT	DEPTH
1211-01089	80mm	80mm



Welding

16TC Electrode

- Unique twin coated low hydrogen all positional (except vertical down) electrode that sets the standard
- Applications include carbon steel/high tensile steels, hard to weld and steels of unknown composition.
- Very fluid slag action with the glassy slag easily removed from weld metal.
- A great all rounder electrode with exceptional arc stability
- X-ray quality.
- Suitable for ‘buttering layers’/build-up welding repairs
- High strength welds on agricultural steels, grouser bars and stick rakes.
- Ideal for maintenance and repairs of all structural steel, stock grates (railway iron) and stock fencing.
- Earth moving equipment and agricultural implements.



SKU	SIZE	UOM
1211-01031	2.5mm	2.5kg Packet
1211-01032	3.2mm	5.0kg Packet
1211-01033	4.0mm	5.0kg Packet

Acetylene Gas Regulator

Single stage regulators offer precise delivery of industrial gases. Quality gas regulators combine safety and rugged design. Twin gauge models show bottle contents and outlet pressure.

SKU
1211-01104



Oxygen Gas Regulator

Oxygen regulators offer precise and accurate flow control. Quality gas regulators combine safety and rugged design. Twin gauge models show bottle contents and outlet pressure.

SKU
1211-01105



Type 551 Oxygen/Acetylene Welding Tip

Swaged brazing and welding tips, made from copper, will fit onto industry standard 10mm gas mixer.

SKU	SIZE
1211-01098	12





Perth Main Warehouse

66 Truganina Rd, Malaga,
Western Australia 6090
+61 (0) 8 9209 8500
perth@westernex.com.au

Kalgoorlie Warehouse

18 Kinclaven Way, Broadwood,
Kalgoorlie, Western Australia 6430
+61 (0) 8 9091 1152
kalgoorlie@westernex.com.au

Brisbane Warehouse

14 Hasp St, Seventeen Mile Rocks,
Queensland 4073
+61 (0) 7 3376 2422
brisbane@westernex.com.au

Mt Isa Warehouse

13 Ryan Rd, (Entry off Davis Rd)
Mt Isa, Queensland 4825
+61 (0) 7 4743 2122
mtisa@westernex.com.au

Orange Warehouse

72 Astill Drive, Orange,
NSW, 2800
+61 (0) 7 3376 2422
brisbane@westernex.com.au

