

Vehicle



Vehicle

Puncture Repair Kit 4WD

Kit contains:

- Tyre Repairs Made Easy instruction manual
- 10 x Tubeless Strings
- 1 x Reamer Handle
- 1 x String Insertion Handle
- 3 x Mini Tube Patches
- 3 x Small Tube Patches
- 3 x Medium Tube Patches
- 3 x Large Patches
- 1 Radial Patch
- 1 Uni Patch
- 4 x 10cc Tube Vulcanising Cement
- 1 Rasp/Stitcher
- 1 Snap-in Tubeless Valve
- 1 3-way Valve Tool
- 3 x Short Core Valve Caps
- 3 x Slotted Metal Valve Caps
- 1 x Blade
- 1 x Marking Chalk



SKU
1802-00064

Metal Dial Tyre Gauge

- 10 to 60 PSI range
- Read out in PSI and KPA
- 40mm diameter dial face
- Calibrated to an accuracy of +/- 0.7 PSI @ 35 PSI
- Retains the pressure reading after release for easy assessment
- Pressure release button
- Internal diaphragm mechanism



SKU
1802-00043

Tyre Inflator

- Die cast aluminium body with steel operating lever and impact absorbing bumper
- Supplied with official calibration certificate
- Laser etched serial number
- Colour co-ordinated bumper and face plate
- Ideal for service station forecourts
- Wire sheathed hose eliminates kinking
- Accuracy exceeds EC Directive 86/217
- Rubber grip on chuck



SKU
1802-00207

Tyre Levers

The tyre levers are 19mm in diameter; are manufactured from high grade BHP steel, are hot forged and heat treated.

SKU	SIZE
1802-00065	600mm



Vehicle

Tyre Pliers Kit

- Kit contains:
- Tyre Repairs Made Easy instruction manual
 - 10 x Tubeless Strings
 - 1 x Reamer Handle
 - 1 x String Insertion Handle
 - 3 x Mini Tube Patches
 - 3 x Small Tube Patches
 - 3 x Medium Tube Patches
 - 3 x Large Patches
 - 1 Radial Patch
 - 1 Uni Patch
 - 4 x 10cc Tube Vulcanising Cement
 - 1 Rasp/Stitcher
 - 1 Snap-in Tubeless Valve
 - 1 3-way Valve Tool
 - 3 x Short Core Valve Caps
 - 3 x Slotted Metal Valve Caps
 - 1 x Blade
 - 1 x Marking Chalk



SKU
1802-00066

Truck Tyre Repair Kit

- Kit contains:
- 8 x Patches size 1
 - 2 x Patches size 2
 - 1 x Patch size 3
 - 1 x Patch size 4
 - 1 x Patch size 5
 - 2 x Patches size 7
 - 1 x Patch size 7A
 - 1 x Patch size 7B
 - 1 x Tube of SVS solution 25 g
 - 3 x Rasps
 - 3 x Short valve cores
 - 1 x Instruction manual



SKU
1802-00037

Aarmorall Protectant

- Cleans, conditions and protects
- Protects against discolouration and cracking
- Suitable for use on rubber, vinyl and plastic

SKU	SIZE
1801-00171-250	250mL
1801-00171-500	500mL



Vehicle

Safety Flag c/w Quick Connect Fitting

- Safety Flags are available in two lengths, 1.5mtr & 3.0mtrs, custom sizes can be obtained if required.
- UV Stable
 - Extremely durable and hard-wearing
 - Mine standard reflective flag
 - Easy to assemble and disassemble
 - These come with a quick release fitting

SKU	SIZE
1801-00710	1.5 Meter
1801-00707	3.0 Meter

Safety Flag Only

- Mine Site Specified
- Fluorescent Orange Mesh Material
- 50mm Wide Silver Reflective Tape
- Double Stitched
- 4 x Cable Ties Included for Mounting

SKU
1801-00711



Quick Connect Fitting

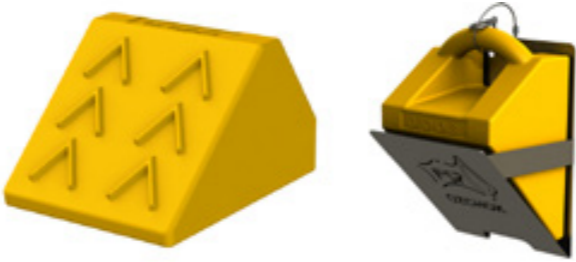
- Includes Female Coupler & Male Insert
- Quickly Releases Minewhip from Vehicle
- 1/2 inch BSW Thread
- Zinc Plated

SKU
1801-00718



Wheel Chock 055

- Weight: 2kg
- Lightweight with tough urethane construction
- 3rd party tested for compliance
- ANSI compliant colour written guidelines on proper chocking procedures.
- Designed to meet SAE-J348, NFPA 1901, and NFPA 1906 Standards.
- Resistant to oils, fuels and solvents
- Strong carrying handle on the backside of the chock
- High visibility colour used for safety



SKU	DESCRIPTION	SIZE (HxWxD)
1801-00102	Wheel Chock	170 x 210 x 290mm
1801-00156	Stainless Steel Chock Bracket	To suit

Spring Mount

- 1/2 inch BSW Threaded Bolt
- Zinc Plated



SKU
1801-00717

Poly Bracket to suit Wheel Chock 055

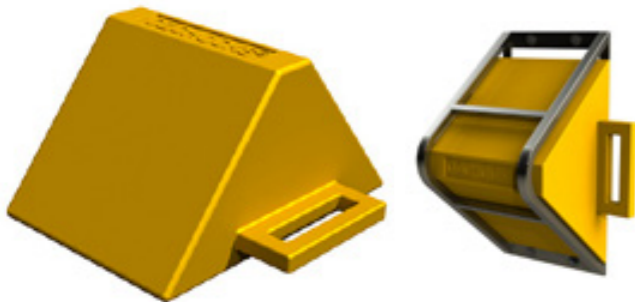
- Made of polyethylene
- One piece smooth
- Edges design
- Lighter than metal
- Fully injection moulded
- High-impact resistance
- UV-resistant
- Quick fitting & release
- Locking feature



SKU	SIZE (HxWxD)
1801-00156-POL	350 x 235 x 166mm

Note: Wheel chocks and stainless steel chock brackets are sold separately for all of these products.

Vehicle



Note: Wheel chocks and stainless steel chock brackets are sold separately for all of these products.

Wheel Chock 105

- Weight: 16kg
- Lightweight with tough urethane construction
- 3rd party tested for compliance
- ANSI compliant colour written guidelines on proper chocking procedures
- Designed to meet SAE-J348, NFPA 1901, and NFPA 1906 Standards
- Resistant to oils, fuels and solvents
- Strong carrying handle on the backside of the chock
- High visibility colour used for safety

Wheel Chock 155

- Weight: 18kg
- Lightweight with tough urethane construction
- 3rd party tested for compliance
- ANSI compliant colour written guidelines on proper chocking procedures.
- Designed to meet SAE-J348, NFPA 1901, and NFPA 1906 Standards.
- Resistant to oils, fuels and solvents
- Strong carrying handle on the backside of the chock.
- High visibility colour used for safety.

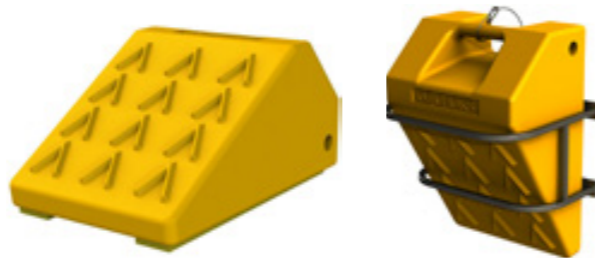
Wheel Chock 065

- Weight: 4kg
- Lightweight with tough urethane construction
- 3rd party tested for compliance
- ANSI compliant colour written guidelines on proper chocking procedures.
- Designed to meet SAE-J348, NFPA 1901, and NFPA 1906 Standards.
- Resistant to oils, fuels and solvents.
- Strong carrying handle on the backside of the chock.
- High visibility colour used for safety.

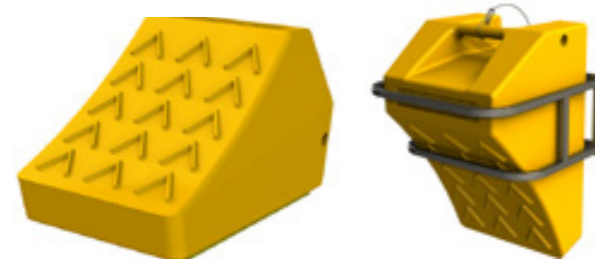
Wheel Chock 075

- Dimensions (HxWxL): 260 x 420 x 465mm
- Weight: 8kg
- Lightweight with tough urethane construction
- 3rd party tested for compliance
- ANSI compliant colour written guidelines on proper chocking procedures.
- Designed to meet SAE-J348, NFPA 1901, and NFPA 1906 Standards.
- Resistant to oils, fuels and solvents
- Strong carrying handle on the backside of the chock
- High visibility colour used for safety

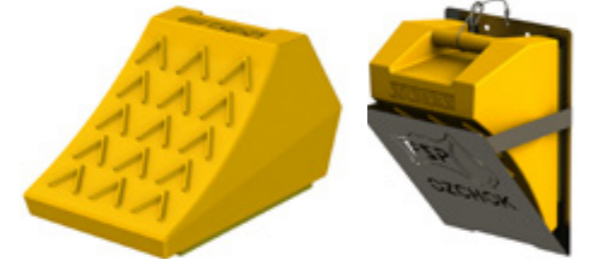
SKU	DESCRIPTION	SIZE (HxWxD)
1801-00061	Wheel Chock	260 x 420 x 465mm
1801-00159	Stainless Steel Chock Bracket	To suit



SKU	DESCRIPTION	SIZE (HxWxD)
1801-00114	Wheel Chock	280 x 380 x 560mm
1801-00715	Stainless Steel Chock Bracket	To suit



SKU	DESCRIPTION	SIZE (HxWxD)
1801-00059	Wheel Chock	410 x 420 x 660mm
1801-00716	Stainless Steel Chock Bracket	To suit



SKU	DESCRIPTION	SIZE (HxWxD)
1801-00138	Wheel Chock	230 x 280 x 370mm
1801-00709	Stainless Steel Chock Bracket	To suit

Vehicle

Maxtrax MKII Safety Orange

MAXTRAX is the lightweight, easy-to-use vehicle recovery and extraction device that’s easily carried by almost anything with four-wheels ensuring an easy way out if your vehicle becomes stuck.

SKU	WEIGHT	SIZE
1804-01000	3.6 kg	1150 x 330 x 70mm



Viper Warning Amber Light 12-LED, Magnetic

- Uses High Intensity LEDs
- 20 patterns including constant on and various flashing patterns.
- Includes 4 speed rotational patterns
- Operates on 12V / 24V DC
- Reverse polarity protected
- Tough polycarbonate lens cover
- C-Tick compliance
- Magnetic base with car charger adaptor and 3.5m cable

SKU
1803-00217



Beacon 3 Bolt Mount LED Flashing Amber

- Voltage: 12-36V
- Current Draw: 15W @ 12V
- Connection Type: 10cm Flylead Cable
- Protection: Reverse polarity protected, resin set circuit board, o’ring sealed twist lock lens with felt shaft seal
- Housing Material: Polycarbonate lens, nylon base
- Mount Type/Size: 3 bolt surface mount PCD 131mm, 6mm mount holes, rubber mount gasket
- Outside Diameter: 147mm
- Overall Height: 117mm
- Rotation Speed/Flashes: 65FPM
- Colour: Amber beacon
- Style/Globe Type/Version/Design: 30 mini LED’s
- Notes: Includes stainless steel mount screws

SKU
1803-00276




Jumper Leads with Spike Guard

These heavy duty jumper leads/booster cables are suitable for most vehicles with a 4, 6 or 8 cylinder petrol engine up to 8.0 litres and diesel engines up to 6.0 litres. PVC sheathed cable gives maximum power transfer. Fitted with fully insulated colour coded terminal clamps. Features built in surge protector to protect a vehicle’s electronics and computer system from power spikes during jump starts.

SKU	POWER	SIZE
1801-00084	700A	3mtr







BLACK DUCK

SEAT COVERS

Black Duck Seat Covers provides your vehicle commercial grade protection. This product is hard wearing, waterproof and tear resistant to protect seats from dirt, grease, grime and liquids.

Black Duck Seat Covers are available for a vast and ever-increasing range of vehicles. Each seat cover is carefully tailored to the individual seat to ensure an exact fit whilst still retaining all the useful functions such as cup holders, adjustment levers, airbags and more.

Black Duck airbag compatible range of seat covers are tested and certified by a government approved testing authority, to be fitted to selected vehicles with seat-fitted side airbags. We use technologically advanced manufacturing techniques which allow the required air bag release in the event of an accident, without compromising the safety of the vehicles occupants; for greater peace of mind.

Quote Requests

Westernex is an authorised reseller of all Black Duck products. Please send all quote requests through to and specify the following details regarding the vehicle you are purchasing these products for:

Brand.....ModelL

Type.....Month/Year

Front Seat (i.e. Bucket, Bench etc.)

Rear Seat (i.e. Bucket, Bench etc.).....

Colour/Material Options



Standard Grey Canvas

☐



Standard Brown Canvas

☐



Standard Black Canvas

☐

Vehicle

High-Lift Jack

Anyone who leaves the pavement to go four-wheeling should own a High-Lift Jack.

	SKU	SIZE
A	1801-00020	Jack
B	1801-00022	Base Plate
C	1801-00023	Bumper Kit
D	1801-00024	Fix-it-Kit
E	1801-00021	Lift Mate



Recovery Kit - 5 Piece

Having a fully stocked and properly maintained recovery kit is an essential accessory for any 4WD enthusiast. It is very important to have quick and easy accessibility to all your recovery equipment. Each recovery kit has been carefully tailored to include the correct equipment for most recovery situations.

- Kit includes:
- 1 x 8000kg Australian-made snatch strap
 - 2 x 3.2 tonne bow shackles
 - 1 x Pair of gloves
 - 1 x Heavy duty storage bag

SKU	SIZE
1801-00206	5 Piece



Recovery Kit - 8 Piece

Having a fully stocked and properly maintained recovery kit is an essential accessory for any 4WD enthusiast. It is very important to have quick and easy accessibility to all your recovery equipment. Each recovery kit has been carefully tailored to include the correct equipment for most recovery situations.

- Kit includes:
- 1x 8000kg Australian-made snatch strap
 - 1 x 4500kg winch ext strap (10m x 50mm)
 - 1 x 6500kg tree trunk protector (3m x 75mm)
 - 1 x 8000kg snatch block
 - 1 x 4.7 tonne bow shackle
 - 1 x 4.7 tonne D shackle
 - 1 x pair of gloves
 - 1 x heavy duty storage bag

SKU	SIZE
1801-00211	8 Piece



Vehicle

Cargo Nets

Used and recommended by governments, resource and utility companies, tradespeople, the 4WD and recreational markets across Australia. Being a load-rated restraint, these offer more confidence and peace-of-mind than tested and certified containment nets. They are made from polyester webbing which makes them UV stabilised, stronger and a longer lasting product. They're a unique way to protect your load legally and securely, while protecting the safety of those around you and the environment.

- Coated hook prevents scratching
- Heavy duty UV stabilised webbing
- Multiple eyelet anchor points
- Anti-tangle design
- Heavy duty mesh rip stop fabric
- All load rated
- Never needs rethreading
- Safely secures small items Buckle is fast to tighten and loosen straps.
- 3 Years Warranty when you register online
- Triple layered reinforced edge
- Complete with straps and carry bag
- Karabiner snaps quickly onto any eyelet



Search the below link and register online, to activate your 3 Years Warranty: safeguardnet.com.au/warranty-2/



Original Cargo Nets

SKU	MIN. TRAY SIZE	MESH COVERAGE	DIMENSIONS
1801-00251-S	1.00 x 0.06m	1.635 x 1.235m	1.83 x 1.435m
1801-00251-M	1.60 x 1.20m	2.435 x 1.835m	2.63 x 2.035m
1801-00251-DC	1.20 x 1.20m	2.235 x 2.235m	2.43 x 2.435m
1801-00251-L	1.60 x 1.20m	2.835 x 2.435m	3.03 x 2.635m
1801-00251-XL	2.40 x 1.00m	3.435 x 2.835m	3.63 x 3.035m
1801-00251-2XL	3.20 x 2.00m	4.235 x 3.035m	4.43 x 3.235m
1801-00251-3XL	4.00 x 1.60m	5.435 x 3.035m	5.63 x 3.235m

Rack Nets

SKU	MIN. TRAY SIZE	DIMENSIONS
1801-00252-S	0.80 x 0.80m	1.635 x 1.635m
1801-00252-M	1.40 x 0.80m	2.235 x 1.635m
1801-00252-L	1.80 x 0.80m	2.635 x 1.635m

Trade Nets

SKU	MIN. TRAY SIZE	DIMENSIONS
1801-00253-S	0.80 x 0.50m	1.235 x 0.935m
1801-00253-M	1.20 x 0.50m	1.835 x 0.935m
1801-00253-L	1.80 x 0.50m	2.435 x 0.935m

Universal Nets

SKU	MIN. TRAY SIZE	DIMENSIONS
1801-00253-U	1.60 x 1.00m	2.265 x 2.035m
1801-00253-XL	2.40 x 0.50m	3.035 x 0.935m

Vehicle



Cargo Carry Bags

SKU	SIZE	DIMENSIONS (L x H x W)
1801-00250-L	Large	500mm x 200mm x 350mm
1801-00250-M	Medium	500mm x 150mm x 300mm
1801-00250-S	Small	450mm x 150mm x 260mm
1801-00250-XL	X-Large	660mm x 220mm x 450mm

Search the below link and register online, to activate your 3 Years Warranty: safeguardnet.com.au/warranty-2/

Weatherproof Tarps

SKU	MIN. TRAY SIZE	DIMENSIONS
1801-00254-S	0.80 x 0.80m	1.635 x 1.635m
1801-00254-M	1.40 x 0.80m	2.235 x 1.635m
1801-00254-L	1.80 x 1.80m	2.635 x 1.635m
1801-00254-U	1.60 x 1.00m	2.635 x 2.035m
1801-00255-DC	1.20 x 1.20m	2.235 x 2.235m
1801-00255-L	1.60 x 1.20m	3.035 x 2.635m



Net Straps

SKU	DESCRIPTION	DIMENSIONS
1801-00256-A	D Hook Style Side UTE/ 2Pk	50 x 3.8cm
1801-00256-B	Hook and Keeper/ 2Pk	100 x 3.8cm
1801-00256-C	S Hook Bike/ 2Pk	200 x 3.8cm
1801-00256-D	S Hook Cargo-Net/ 2Pk	100 x 3.8cm
1801-00256-E	S Hook Rack-Net/ 2Pk	70 x 3.8cm



Ratchet Straps

SKU	DESCRIPTION
1801-00257-A	Ratchet Strap 4mx25mm S Hook
1801-00257-B	Ratchet Strap 5mx25mm Hook and Keeper
1801-00257-C	Ratchet Strap 9mx50mm Hook and Keeper
1801-00257-D	Ratchet Strap 6mx35mm Hook and Keeper
1801-00257-E	Ratchet Strap 6mx35mm S Hook



Vehicle

Century HP Battery N70ZZ MFC

- Carry Handles
- Central Venting
- Flame Arrestor
- Maintenance Free
- Mud Rack
- Platelock™ Technology
- State of Charge Indicator
- Vibration Resistant
- Made In Australia

Normal Overall Dimensions (mm)

- Length:305
- Width:171
- Height:202
- Total Height:225
- Hold-Down:Side

SKU
1111-00502

Technical Specifications

- Volts:12
- CCA:720
- RC:170
- AH:85
- Weight (kg):21.90



Century HP Battery N70ZZL MFC

- Carry Handles
- Central Venting
- Flame Arrestor
- Maintenance Free
- Mud Rack
- Platelock™ Technology
- State of Charge Indicator
- Vibration Resistant
- Made In Australia

Normal Overall Dimensions (mm)

- Length:305
- Width:171
- Height:202
- Total Height:225
- Hold-Down:Side

SKU
1111-00503

Technical Specifications

- Volts:12
- CCA:720
- RC:170
- AH:85
- Weight (kg):21.90



Century HP Battery NS70 MFC

- Carry Handles
- Central Venting
- Flame Arrestor,
- Maintenance Free
- Mud Rack
- State of Charge Indicator
- Made In Australia

SKU
1111-00504

Normal Overall Dimensions (mm)

- Length:259
- Width:171
- Height:202
- Total Height:225
- Hold-Down:Side

Technical Specifications

- Weight (kg):18.70
- Volts:12
- CCA:650
- RC:140
- AH:75



Vehicle

Century HP Battery NS70L MFC

- Carry Handles
- Central Venting
- Flame Arrestor
- Maintenance Free
- Mud Rack
- State of Charge Indicator
- Made In Australia

Normal Overall Dimensions (mm)

- Length:259
- Width:171
- Height:202
- Total Height:225
- Hold-Down:Side

SKU
1111-00505

Technical Specifications

- Weight (kg):18.70
- Volts:12
- CCA:650
- RC:140
- AH:75



Century HD Battery N100 MFC

- Carry Handles
- Central Venting
- Flame Arrestor
- Glass Mat Separator
- Maintenance Free
- Mud Rack
- Platelock™ Technology
- State of Charge Indicator
- Vibration Resistant

Normal Overall Dimensions (mm)

- Length:408
- Width:173
- Height:210
- Total Height:232

SKU
1111-00506

Technical Specifications

- Weight (kg):24.70
- Volts:12
- CCA:740
- RC:182
- AH:100



Century HD Battery N100L MFC

- Carry Handles
- Central Venting
- Flame Arrestor
- Glass Mat Separator
- Maintenance Free
- Mud Rack
- Platelock™ Technology
- State of Charge Indicator
- Vibration Resistant

Normal Overall Dimensions (mm)

- Length:408
- Width:173
- Height:210
- Total Height:232

SKU
1111-00507

Technical Specifications

- Volts:12
- CCA:740
- RC:182
- AH:100
- Weight (kg):24.70



Vehicle

Century HD Battery N120 MFC

- Carry Handles
- Central Venting
- Flame Arrestor
- Maintenance Free
- Mud Rack
- Platelock™ Technology
- State of Charge Indicator
- Vibration Resistant

Normal Overall Dimensions (mm)

- Length:503
- Width:181
- Height:210
- Total Height:233

SKU
1111-00508

Technical Specifications

- Volts:12
- CCA:900
- RC:230
- AH:135
- Weight (kg):31.60



Century HD Battery N120L MFC

- Carry Handles
- Central Venting
- Flame Arrestor
- Maintenance Free
- Mud Rack
- Platelock™ Technology
- State of Charge Indicator
- Vibration Resistant

Normal Overall Dimensions (mm)

- Length:503
- Width:181
- Height:210
- Total Height:233

SKU
1111-00509

Technical Specifications

- Volts:12
- CCA:900
- RC:230
- AH:135
- Weight (kg):31.60



Century HD Battery N150L MFC

- Carry Handles
- Central Venting
- Flame Arrestor
- Maintenance Free
- Mud Rack
- Platelock™ Technology
- State of Charge Indicator
- Vibration Resistant

Normal Overall Dimensions (mm)

- Length:506
- Width:220
- Height:211
- Total Height:233

SKU
1111-00511

Technical Specifications

- Volts:12
- CCA:1000
- RC:300
- AH:155
- Weight (kg):39.20



Vehicle

Century HD Battery N150C MFC

- Carry Handles
- Central Venting
- Flame Arrestor
- Maintenance Free
- Mud Rack
- Platelock™ Technology
- State of Charge Indicator
- Vibration Resistant

Normal Overall Dimensions (mm)

- Length:506
- Width:220
- Height:210
- Total Height:233

SKU
1111-00510

Technical Specifications

- Volts:12
- CCA:1000
- RC:300
- AH:155
- Weight (kg):39.20



Century HD Battery N200C MFC

- Carry Handles
- Central Venting
- Flame Arrestor
- Maintenance Free
- Mud Rack
- Platelock™ Technology
- State of Charge Indicator
- Vibration Resistant

Normal Overall Dimensions (mm)

- Length:520
- Width:277
- Height:218
- Total Height:241

SKU
1111-00512

Technical Specifications

- Volts:12
- CCA:1200
- RC:430
- AH:200
- Weight (kg):51.50



Century HD Battery N200L MFC

- Carry Handles
- Enhanced Flooded Battery
- Glass Mat Separator
- Low Maintenance
- State of Charge Indicator

Normal Overall Dimensions (mm)

- Length:518
- Width:274
- Height:216
- Total Height:238

SKU
1111-00513

Technical Specifications

- Volts:12
- CCA:1150
- RC:480
- AH:225
- Weight (kg):58.10





Perth Main Warehouse

66 Truganina Rd, Malaga,
Western Australia 6090
+61 (0) 8 9209 8500
perth@westernex.com.au

Kalgoorlie Warehouse

18 Kinclaven Way, Broadwood,
Kalgoorlie, Western Australia 6430
+61 (0) 8 9091 1152
kalgoorlie@westernex.com.au

Brisbane Warehouse

14 Hasp St, Seventeen Mile Rocks,
Queensland 4073
+61 (0) 7 3376 2422
brisbane@westernex.com.au

Mt Isa Warehouse

13 Ryan Rd, (Entry off Davis Rd)
Mt Isa, Queensland 4825
+61 (0) 7 4743 2122
mtisa@westernex.com.au

Orange Warehouse

72 Astill Drive, Orange,
NSW, 2800
+61 (0) 7 3376 2422
brisbane@westernex.com.au

